



AUTHENTIC ASSESSMENT

● ● ● WHAT IS OUTCOMES DATA?

Faculty, deans, provosts, IT professionals - it seems almost everyone is talking about **outcomes assessment** these days.

But what kinds of data can help faculty and administrators improve curricula and satisfy the increasingly stringent requirements of accrediting agencies like WASC, ABET, AACSB, NCATE, and SACS?

Multiple choice tests and end-of-course surveys provide data, but they do not effectively assess the more complex skills that are so crucial to success both in the classroom and in the workforce. To develop **authentic data** on student learning, schools must assess students on complex tasks.

WAYPOINT RESULTS

Saves hundreds of hours generating outcomes data

Leverages existing investment in Learning Management Systems

Creates better feedback for students

Facilitates a culture of assessment

.....
"Other software purporting to generate assessment data served only our administrative needs. Waypoint helps model the kinds of response and criteria-based assessment we want our undergrad and grad students using in their own teaching." -Dr. Patricia Rogers, Dean of the School of Education and Graduate Studies Valley City State University
.....

● ● ● WHAT IS AUTHENTIC ASSESSMENT?

Educators know that authentic tasks, such as essays, reports, presentations, discussion posts, portfolios, and team projects, are the best measures of student learning. The research shows that prompt, detailed feedback on these kinds of tasks is vital if students are to learn and grow.

Waypoint features customizable, interactive rubrics to help faculty create exceptional feedback for students in just a few mouse clicks. Feedback can be easily edited to customize a response to an individual student, then printed, emailed, or exported to an LMS gradebook.

Waypoint helps faculty collaborate to build consensus on assessment practices and define course-level and program-level goals. Along with better feedback for students and rich data on authentic tasks, schools benefit from the development of the systematic assessment practices that accrediting bodies increasingly require.

- ✓ Standardize and align assessment across multiple courses or sections.
- ✓ Preserve creative freedom for faculty.
- ✓ Improve the timeliness and quality of feedback to students.
- ✓ Develop rich data while creating student response, not in addition to it.
- ✓ Assess all types of student work, not just electronic documents or portfolios.

● ● ● A UNIQUE APPROACH:

Faculty access Waypoint through a Learning Management System, such as the Blackboard Learning Management System™ or Moodle Course Management System. Unlike some assessment software, Waypoint is not tied to the student work that will be assessed.

Student work might be in hardcopy, an electronic file, or even a live presentation. Faculty use the Waypoint web interface to quickly and easily create feedback for students using interactive rubrics tied to customized learning outcomes. These rubrics can be easily shared among teams of teachers, leveraging the work of faculty who are early Waypoint adopters.

Waypoint is used to assess and respond to work in a vast array of disciplines, from discussion posts in a nursing program, to lesson plans in an undergraduate education program, to in-class essays in an English class, to complex content-specific assignments like engineering reports, legal briefs, and business school case study analyses.

.....

“I never had students comment on my comments before. But my students love the feedback I create with Waypoint. I receive numerous comments from them telling me how helpful they find it”

– Mitch Nathanson,
Professor of Law Villanova Law School

.....

The screenshot shows the Waypoint interface for two rubric sections: 'Table of Contents' and 'Abstract'. The 'Table of Contents' section has three criteria, with the third one selected. The 'Abstract' section has four criteria, with the second one selected. A feedback comment is visible for the second criterion of the 'Abstract' section, which is highlighted in a yellow box. The comment reads: 'Chris, This is an extremely polished essay that argues (with a small 'a') a consistent point. The next step for you is to think about more compelling ways to pull together the various points you make. That is, a thesis statement is not as effective if it is in the following format: "A restaurant will be profitable because of X, Y, and Z" where X, Y, and Z are relatively unrelated. The hope, in this project, was that you would find some research that would pull together various points you might make and focus them into a single argument: "the restaurant will be profitable because of XYZ." It's a process! And you should be very proud of your achievement here, and all the work that went into it.'

1. Project 2 Overall Response: Argument, Evidence, and Writing

- You have written a **well-reasoned** and substantiated essay that focuses on a **central argument**. This is solid work, and improvement can only come through even more original or finely argued writing. Most likely, this advance will come through increasing the sophistication in your writing (increased sentence complexity, original phrasings, a more developed organizational structure) and seeing more connections between various evidence that you use.
- You use **evidence particularly well** in advancing and analyzing your case.

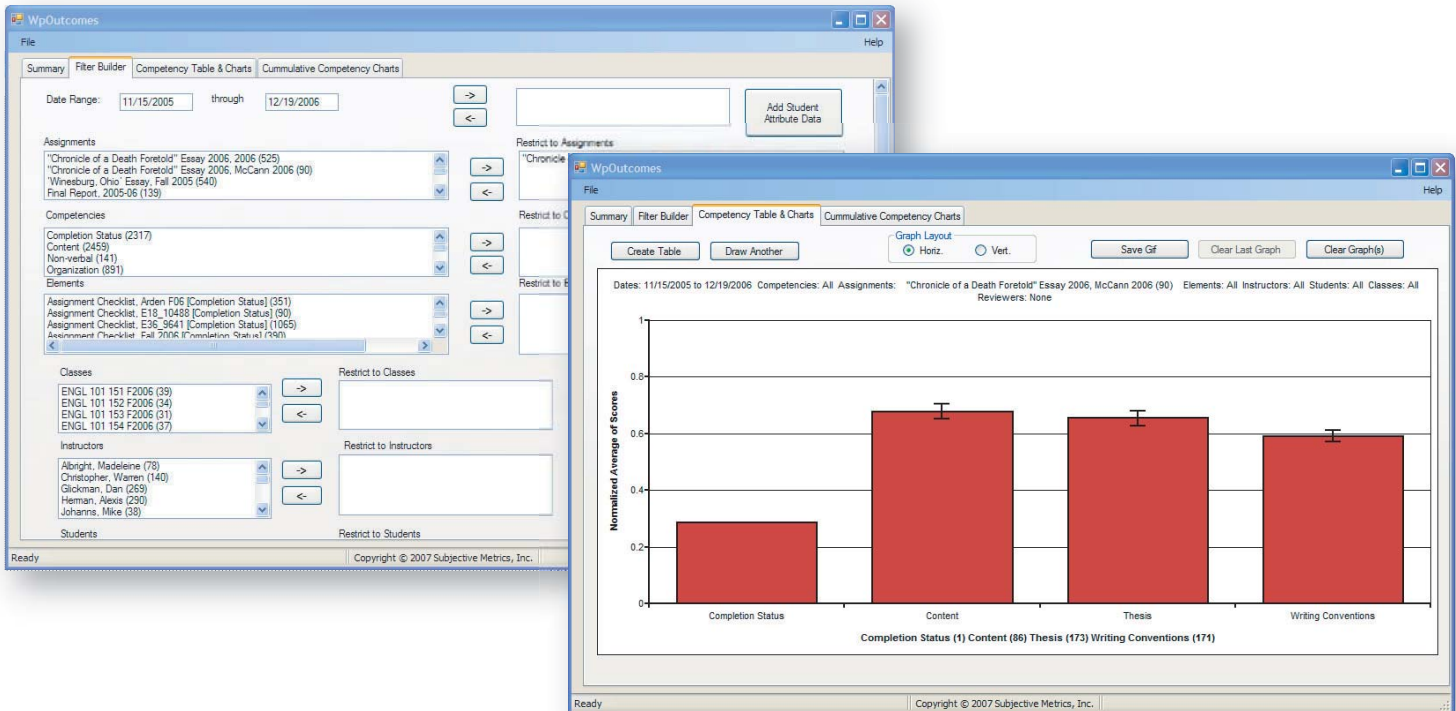
A sample interactive rubric and the kind of feedback faculty create with Waypoint

Faculty can also use Waypoint to structure and manage peer review and self-assessment, or to supervise Teaching Assistants and encourage standardized responses across multiple sections.

Our partnership with the University of Kansas' RubiStar website means faculty have the power of 140,000 rubrics behind them – all of which can be made interactive with a few clicks.

THE WAYPOINT SYSTEM:

While faculty and students use Waypoint via a web interface tied to a school e-learning platform of choice, assessment coordinators and administrators can utilize WpOutcomes, a powerful PC-based analysis program that makes analyzing and reporting authentic assessment data a simple process. WpOutcomes makes it easy to download data tables, build queries, create charts, and cross assessment data with demographics – all without any specialized knowledge of databases or spreadsheet programs. With a few clicks administrators can create detailed graphs comparing cohort performance, tracking progress of skills across an entire undergraduate program, or producing data required by accrediting agencies.



christopher j. heisen
subjective metrics inc

310.424.1405

cjheisen@subjectivemetrics.com

LEARN MORE:

Contact us to learn more about our customized learning outcomes, case studies of successful implementations, and the diverse ways that educators are using Waypoint to improve feedback and generate rich data on student achievement.

www.gowaypoint.com