

2000 Enrollment Report

Gallaudet  **University**

Office of Institutional Research
January 2001

Table of Contents

Introduction	4
--------------	---

ENROLLMENT

Table 1: Fall 2000 Enrollment	7
Table 2: Fall Enrollment History 1989-2000	8
Table 3: Deaf/Hearing & Racial/Ethnic Distribution of Fall 2000 Enrollment	10
Figure 1: Deaf/Hearing & Racial/Ethnic Distribution of Fall 2000 Enrollment	11
Table 4: Fall Enrollment History by Racial/Ethnic Distribution 1989-2000	12
Table 5: Fall 2000 U.S. Enrollment by State	13
Table 6: Fall 2000 International Enrollment by Country	14
Table 7: Fall 2000 Full- and Part-Time Enrollment by Gender	15
Table 8: Fall 2000 Undergraduate Majors by Department	16
Table 9: Fall 2000 Graduate Majors	17
Table 10: Total Annual Enrollment Academic Year 1999-2000	18
Table 11: Annual Unduplicated Headcount Enrollment Academic Years 1994 to 1999	19
Table 12: Annual Institutional Activity Academic Years 1997-2000	20

ADMISSIONS

Table 13: Fall 2000 Undergraduate Admissions Summary and History of Fall Applications, Admissions, and Registrations 1994-2000	24
Table 14: Fall Graduate Degree-Seeking Applications, Admissions, and Registrations 1994-2000	25
Table 15: Fall 2000 New Degree-Seeking Undergraduate Students by Demographic Characteristics	26
Figure 2: Fall 2000 New Degree-Seeking Undergraduate Students by English & Mathematics Placement Test Performance	27
Table 16: Fall 2000 New Degree-Seeking Graduate Students by Demographic Characteristics and Programs	28

GRADUATION, PERSISTENCE AND ATTRITION

Table 17: Undergraduate One-Year Attrition and Persistence	32
Figure 3: Undergraduate One-Year Attrition Trends 1989-2000	33
Table 18: Undergraduate One-Year Attrition by Class, Gender, and Race/Ethnicity 1989-2000	33
Table 19: Long-Term Retention Rate of Entering Undergraduate Classes 1995-1999	34
Table 20: Degrees Awarded Academic Years 1989-1999	35
Table 21: Degrees Awarded by Gender and Race/Ethnicity Academic Year 1999-2000	36
Table 22: Undergraduate Degrees by Discipline Academic Year 1999-2000	37
Table 23: Graduate Degrees by Discipline Academic Year 1999-2000	38

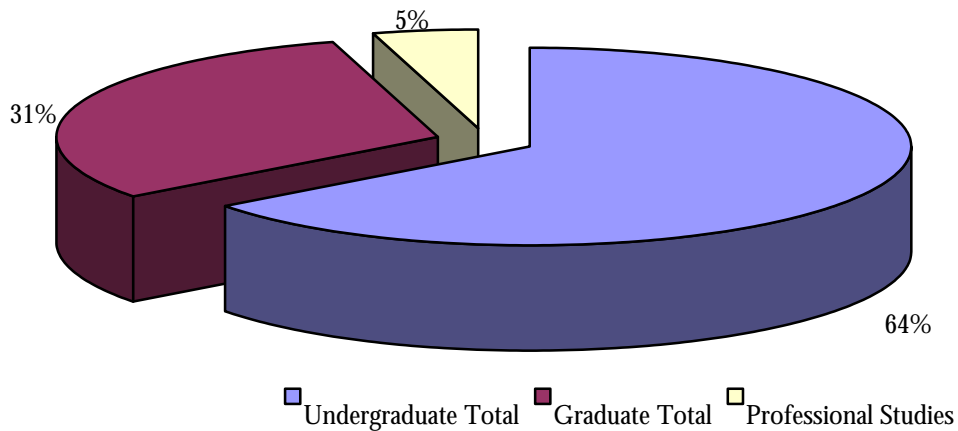
INTRODUCTION

Gallaudet University's total enrollment for fall 2000 is 2,039. This includes 1,321 undergraduate, 625 graduate, and 93 professional studies students. Many of the tables in this report focus on the 1,188 degree-seeking undergraduate and 368 degree-seeking graduate students. The Office of Institutional Research welcomes suggestions from members of the Gallaudet community on how the content and format of this report could be improved.

Enrollment

TABLE 1: FALL 2000 ENROLLMENT

Freshmen	537
Sophomores	210
Juniors	202
Seniors	233
Second Degree	6
Undergraduate Special	41
Exchange	0
Visiting	6
Undergraduate Extension	63
International Interns	0
English Language Institute	23
Undergraduate Total	1,321
Masters	253
Educational Specialist	2
Doctoral	103
Certificate	10
Graduate Special	63
Graduate Extension	194
International Interns	0
Graduate Total	625
Professional Studies	93
TOTAL	2,039



**TABLE 2: FALL ENROLLMENT HISTORY
1989-2000**

	1989	1990	1991	1992	1993	1994
Preparatory	275	247	196	228	180	161
A.A.S.	27	23	28	27	21	18
Freshmen	614	587	502	507	552	511
Sophomores	350	317	299	285	256	289
Juniors	273	302	299	302	260	265
Seniors	263	304	323	336	315	297
Second Degree				17	11	8
Undergraduate Special	36	39	41	44	51	38
Exchange		1	1	2	2	5
Visiting		5	9	12	12	10
Undergraduate Extension						
International Interns						
English Language Institute						
Undergraduate Total	1,838	1,825	1,698	1,760	1,660	1,602
Masters	222	239	228	243	256	236
Educational Specialist	2	1	0	0	0	2
Doctoral	22	34	37	45	58	65
Summer Study	8	6	6	0	5	9
Certificate						
Graduate Special	72	88	69	69	52	60
Graduate Extension	75	75	75	64	68	89
International Interns						
Graduate Total	401	443	415	421	439	461
Professional Studies	113	116	130	79	102	112
TOTAL	2,352	2,384	2,243	2,260	2,201	2,175

**TABLE 2: FALL ENROLLMENT HISTORY
1989-2000**

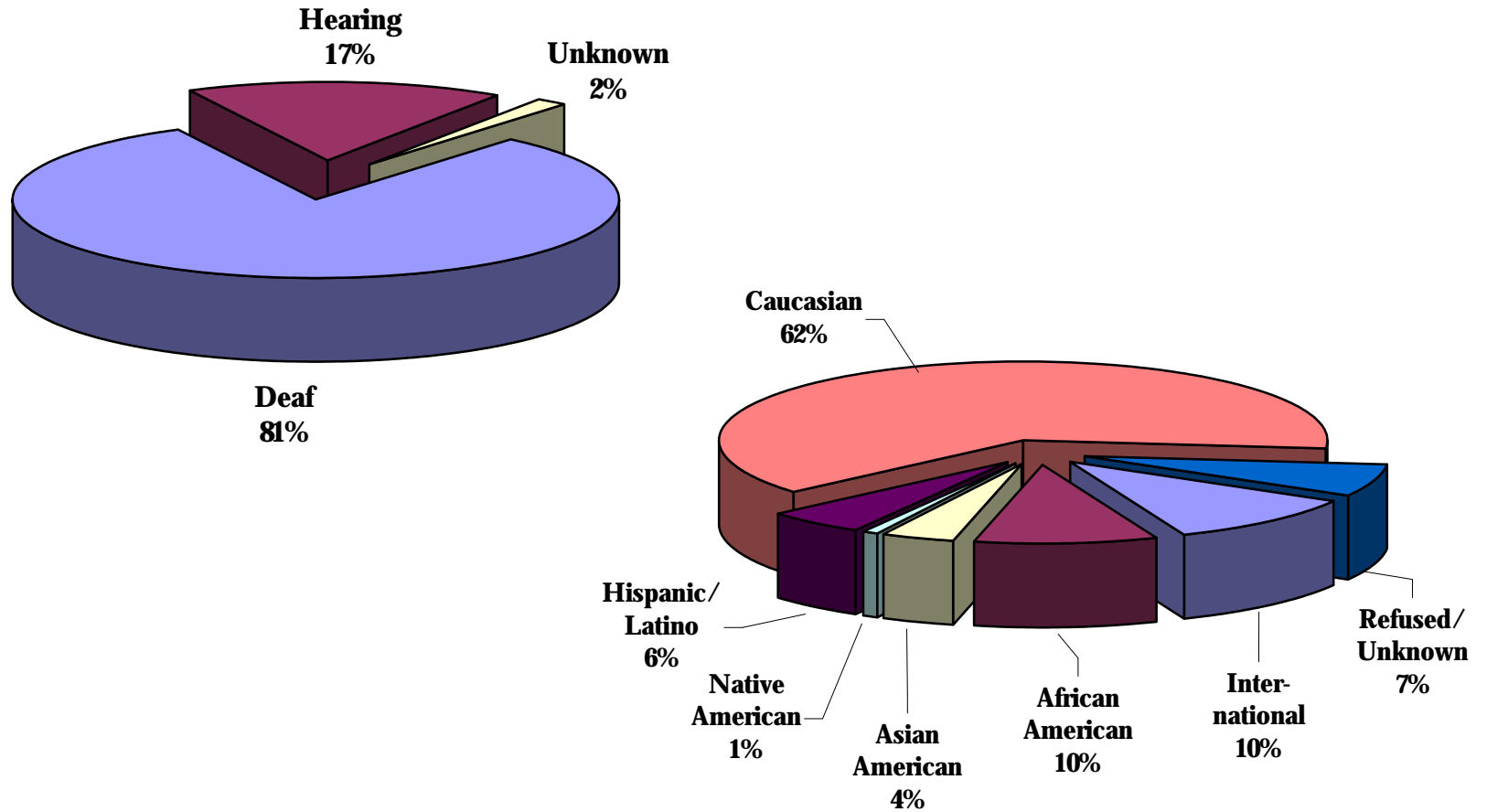
	1995	1996	1997	1998	1999	2000
Preparatory						
A.A.S.	8					
Freshmen	583	481	476	501	503	537
Sophomores	264	243	260	220	221	210
Juniors	274	245	216	240	218	202
Seniors	287	284	256	236	248	233
Second Degree	12	8	11	20	13	6
Undergraduate Special	48	31	27	36	25	41
Exchange	0	1	0	0	0	0
Visiting	10	9	5	10	10	6
Undergraduate Extension		42	88	32	74	63
International Interns				5	6	0
English Language Institute						23
Undergraduate Total	1,486	1,344	1,339	1,300	1,318	1,321
Masters	243	261	280	302	285	253
Educational Specialist	1	0	1	0	2	2
Doctoral	71	71	79	81	95	103
Summer Study	6	11	14	17	0	0
Certificate		1	0	1	0	10
Graduate Special	68	54	72	40	35	63
Graduate Extension	205	178	268	185	124	194
International Interns				2	0	0
Graduate Total	594	576	714	628	541	625
Professional Studies	128	114	92	70	86	93
TOTAL	2,208	2,034	2,145	1,998	1,945	2,039

**TABLE 3: DEAF/HEARING AND RACIAL/ETHNIC CHARACTERISTICS
OF FALL 2000 ENROLLMENT***

	Deaf	Hearing	Unknown	Inter- national	African American	Asian American	Native American	Hispanic/ Latino	Caucasian	Refused/ Unknown
Freshman	536	1	0	67	68	24	5	38	322	13
Sophomores	209	0	1	25	19	8	1	14	130	13
Juniors	194	0	8	14	22	9	0	11	134	12
Seniors	223	2	8	33	16	14	2	13	142	13
Second Degree	5	0	1	2	0	1	0	0	3	0
Undergraduate Special	27	13	1	4	2	1	1	1	16	16
Exchange	0	0	0	0	0	0	0	0	0	0
Visiting	2	4	0	0	0	0	0	0	5	1
International Interns	0	0	0	0	0	0	0	0	0	0
English Language Institute	20	0	3	16	0	2	0	1	0	4
Undergraduate Total	1,216	20	22	161	127	59	9	78	752	72
Masters	100	151	2	13	20	3	1	9	193	14
Educational Specialist	0	2	0	0	1	0	0	0	0	1
Doctoral	30	73	0	3	8	4	0	4	69	15
Certificate	6	4	0	0	0	0	0	0	8	2
Graduate Special	23	37	3	3	5	2	1	2	40	10
International Interns	0	0	0	0	0	0	0	0	0	0
Graduate Total	159	267	5	19	34	9	2	15	310	42
TOTAL	1,375	287	27	180	161	68	11	93	1,062	114

* Numbers do not include extension students.

FIGURE 1: DEAF/HEARING AND RACIAL/ETHNIC DISTRIBUTION OF FALL 2000 ENROLLMENT*



* Numbers do not include extension students.

**TABLE 4: FALL ENROLLMENT HISTORY
BY RACIAL/ETHNIC DISTRIBUTION*
1989-2000**

	1989	1990	1991	1992	1993	1994	1995	1996	1997	1998	1999	2000
Undergraduate												
International	14%	14%	15%	16%	11%	11%	13%	13%	12%	13%	12%	13%
African-American	6%	7%	7%	7%	9%	9%	10%	10%	11%	11%	10%	10%
Asian-American	2%	1%	2%	2%	2%	4%	4%	4%	4%	4%	4%	5%
Native-American	0%	0%	0%	0%	1%	1%	1%	1%	1%	1%	1%	1%
Hispanic/Latino	4%	4%	4%	3%	5%	6%	5%	5%	6%	7%	6%	6%
Caucasian	74%	73%	71%	69%	70%	67%	65%	63%	62%	61%	63%	60%
Refused/Unknown	0%	0%	1%	2%	3%	3%	3%	3%	4%	4%	5%	6%
Graduate												
International	10%	10%	11%	9%	10%	8%	8%	9%	6%	5%	4%	4%
African-American	3%	5%	5%	6%	7%	7%	8%	8%	9%	8%	8%	8%
Asian-American	1%	1%	1%	2%	2%	1%	1%	2%	2%	2%	2%	2%
Native-American	0%	0%	0%	0%	0%	1%	0%	0%	0%	1%	0%	0%
Hispanic/Latino	1%	2%	2%	2%	2%	3%	3%	4%	4%	4%	4%	3%
Caucasian	83%	80%	78%	79%	78%	78%	72%	68%	69%	75%	78%	72%
Refused/Unknown	1%	2%	1%	2%	2%	3%	8%	10%	11%	5%	4%	10%
TOTAL ENROLLMENT												
International	14%	14%	15%	15%	11%	10%	12%	12%	11%	11%	10%	10%
African-American	6%	6%	7%	7%	8%	9%	9%	10%	10%	10%	9%	10%
Asian-American	2%	1%	2%	2%	2%	3%	3%	4%	4%	4%	3%	4%
Native-American	0%	0%	0%	0%	1%	1%	1%	1%	1%	1%	1%	1%
Hispanic/Latino	3%	3%	3%	3%	4%	5%	5%	5%	5%	6%	6%	6%
Caucasian	75%	74%	72%	71%	71%	69%	66%	64%	64%	65%	67%	62%
Refused/Unknown	0%	1%	1%	2%	3%	3%	4%	5%	6%	4%	4%	7%

* Numbers do not include extension students.

TABLE 5: FALL 2000 U.S. ENROLLMENT BY STATE

	Undergraduate	Graduate		Undergraduate	Graduate
Alabama	14	4	Missouri	26	5
Alaska	1	1	Montana	1	0
Arizona	27	7	Nebraska	3	1
Arkansas	5	0	Nevada	2	1
California	80	20	New Hampshire	5	0
Colorado	11	4	New Jersey	27	4
Connecticut	14	1	New Mexico	5	1
Delaware	7	1	New York	87	17
District of Columbia	29	27	North Carolina	23	6
Florida	47	11	North Dakota	0	0
Georgia	14	4	Ohio	39	10
Guam	2	0	Oklahoma	2	0
Hawaii	7	1	Oregon	12	2
Idaho	9	4	Pennsylvania	53	13
Illinois	49	6	Rhode Island	7	3
Indiana	22	1	South Carolina	5	3
Iowa	7	3	South Dakota	8	1
Kansas	15	3	Tennessee	11	4
Kentucky	11	0	Texas	45	24
Louisiana	12	2	Utah	1	1
Maine	8	1	Vermont	2	0
Maryland	107	80	Virginia	50	43
Massachusetts	24	11	Washington	13	5
Michigan	18	4	West Virginia	8	2
Minnesota	35	5	Wisconsin	29	3
Mississippi	5	0	Wyoming	2	2

TOTAL STUDENTS	1,046	352
TOTAL STATES/TER.	51	43

TABLE 6: FALL 2000 INTERNATIONAL ENROLLMENT BY COUNTRY

	Undergraduate	Graduate		Undergraduate	Graduate
Argentina	1	0	Korea, Republic of	1	0
Austria	1	0	Latvia	1	0
Belgium	2	0	Lebanon	1	0
Botswana	1	1	Malaysia	1	0
Brazil	3	3	Mexico	1	0
Burundi	2	0	Netherlands	6	0
Cameroon	0	1	New Zealand	0	1
Canada	57	2	Nigeria	2	0
China	8	1	Norway	2	0
Colombia	2	0	Pakistan	2	0
Czech Republic	1	0	Panama	1	0
Ethiopia	1	0	Philippines	1	0
Finland	1	0	Russian Federation	1	0
France	2	0	Rwanda	1	0
Germany	1	0	Saudi Arabia	4	2
Guatemala	1	0	Singapore	5	0
Haiti	1	0	Slovakia	1	0
Hong Kong	2	0	South Africa	3	0
Iceland	2	0	Sri Lanka	1	0
India	3	0	Sweden	9	0
Indonesia	1	0	Taiwan, Province of China	3	1
Iran (Islamic Republic Of)	1	0	Thailand	2	0
Israel	2	0	Trinidad and Tobago	0	1
Italy	1	0	United Arab Emirates	2	1
Jamaica	1	1	United Kingdom	2	1
Japan	3	3	Uzbekistan	1	0
Jordan	1	0			

TOTAL STUDENTS	156	19
TOTAL COUNTRIES	50	13

**TABLE 7: FALL 2000 FULL- AND PART-TIME
ENROLLMENT BY GENDER**

	Full-time		Part-time	
	Women	Men	Women	Men
Freshman	261	263	6	6
Sophomores	111	93	5	2
Juniors	106	91	5	0
Seniors	120	95	11	7
Second Degree	2	4	0	0
Undergraduate Special	6	2	21	12
Exchange	0	0	0	0
Visiting	4	2	0	0
International Interns	0	0	0	0
English Language Institute	10	13	0	0
Undergraduate Total	620	563	48	27
Masters	176	30	33	14
Educational Specialist	0	1	1	0
Doctoral	51	13	31	8
Certificate	0	1	5	4
Graduate Special	8	4	37	14
International Interns	0	0	0	0
Graduate Total	235	49	107	40
TOTAL	855	612	155	67

**TABLE 8: FALL 2000 UNDERGRADUATE MAJORS
BY DEPARTMENT**

College of Arts and Sciences		School of Communication	
Art	32	American Sign Language	8
Biology	22	Communication Arts	36
Chemistry	6	Television & Photography	10
Computer Science	19	Theater Arts	4
Deaf Studies	14		
English	16	Subtotal	58
Family & Consumer Studies	21		
French	0	School of Management	
Government	10	Accounting	16
History	13	Business Administration	21
Mathematics	7	Computer Information Systems	17
Philosophy	1	Economics & Finance	8
Psychology	30	Entrepreneurial Studies	1
Social Work	32		
Sociology	6	Subtotal	63
Spanish	3		
Subtotal	232	School of Education & Human Services	
		Education	40
		Physical Education	19
		Recreation & Leisure Studies	11
		Subtotal	70
TOTAL		423	

TABLE 9: FALL 2000 GRADUATE MAJORS

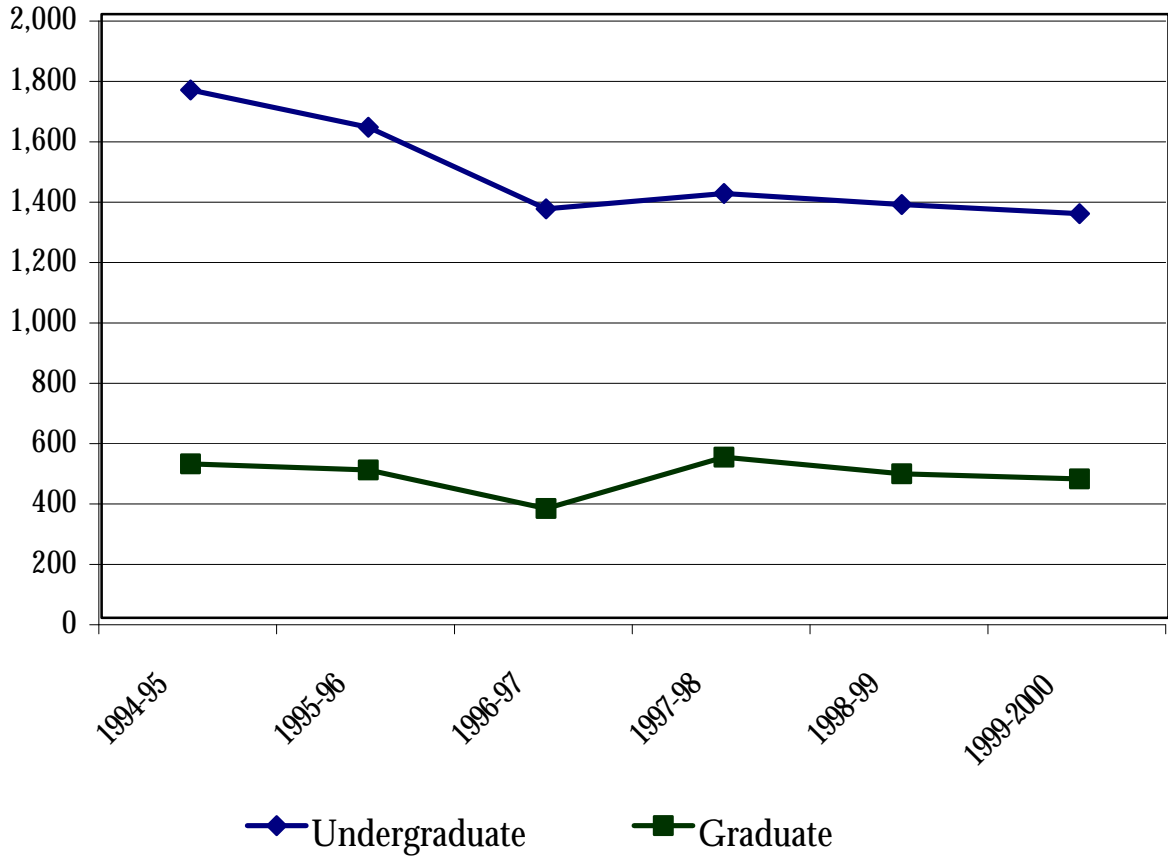
College of Arts and Sciences		School of Education & Human Services	
History		Administration & Supervision	
Deaf History, Cert.	10	Administration, M.S.	8
Psychology		Instructional Supervision, Ed.S.	1
Clinical Psychology, Ph.D.	26	Special Education	
Developmental Psychology,		Administration, Ph.D.	30
M.A./Specialist	21	Counseling	
Social Work, M.S.W.	48	Community Counseling, M.A.	5
Subtotal	105	Mental Health, M.A.	18
		School Guidance, M.A.	21
		Rehabilitation, M.A.	0
		Education: Deafness	
		Advanced Studies, M.A.	5
		Education, Ed.S.	1
		Education, Ph.D.	18
		Elementary, M.A.	21
		Family Centered Early	
		Education, M.A.	14
		Multiple Disabilities, M.A.	11
		Secondary, M.A.	16
		Special Programs in	
		Deafness, M.A.	4
		Recreation & Leisure Studies	
		Leisure Services Administration,	
		M.S.	4
		Subtotal	177
TOTAL			368

**TABLE 10: TOTAL ANNUAL ENROLLMENT
ACADEMIC YEAR 1999-2000**

	Fall 1999	Spring 2000	Summer 2000
Freshmen	503	419	29
Sophomores	221	220	42
Juniors	218	216	61
Seniors	248	274	95
Second Degree	13	1	0
Undergraduate Special	25	21	12
Exchange	0	0	0
Visiting	10	0	0
Undergraduate Extension	74	74	0
International Interns	6	1	0
Undergraduate Total	1,318	1,226	239
Masters	285	253	80
Educational Specialist	2	0	0
Doctoral	95	88	22
Graduate Special	35	27	14
Graduate Extension	124	124	0
International Interns	0	0	0
Graduate Total	541	492	116
Professional Studies	86	104	376
TOTAL	1,945	1,822	731

TABLE 11: ANNUAL UNDUPLICATE HEADCOUNT ENROLLMENT ACADEMIC YEARS 1994 TO 1999

	1994-95	1995-96	1996-97	1997-98	1998-99	1999-2000
Undergraduate	1,749	1,625	1,355	1,406	1,369	1,339
Graduate	510	490	362	532	477	460



Footnote: This is an unduplicated count of the total number of students by level enrolled during the 12-month reporting period in any courses that can lead to a degree or other formal award.

**TABLE 12: ANNUAL INSTITUTIONAL ACTIVITY
ACADEMIC YEARS 1997-1999**

	1997-98	1998-99	1999-2000
Institutional and Degree Credit Hours			
Undergraduate	40,042	39,408	34,558
Graduate	10,269	10,280	9,215
Total	50,311	49,688	43,773

Student Support Contact Hours

Tutorial Services	14,385	9,375	6,318
Academic Advising	10,400	12,000	12,500
Career Center	6,575	6,590	7,450
Students with Disabilities	7,300	7,000	7,300
Counseling Services	17,994	17,400	13,723
Student Affairs	77,597	75,250	76,807
Total	134,251	127,615	124,098

College for Continuing Education Participants

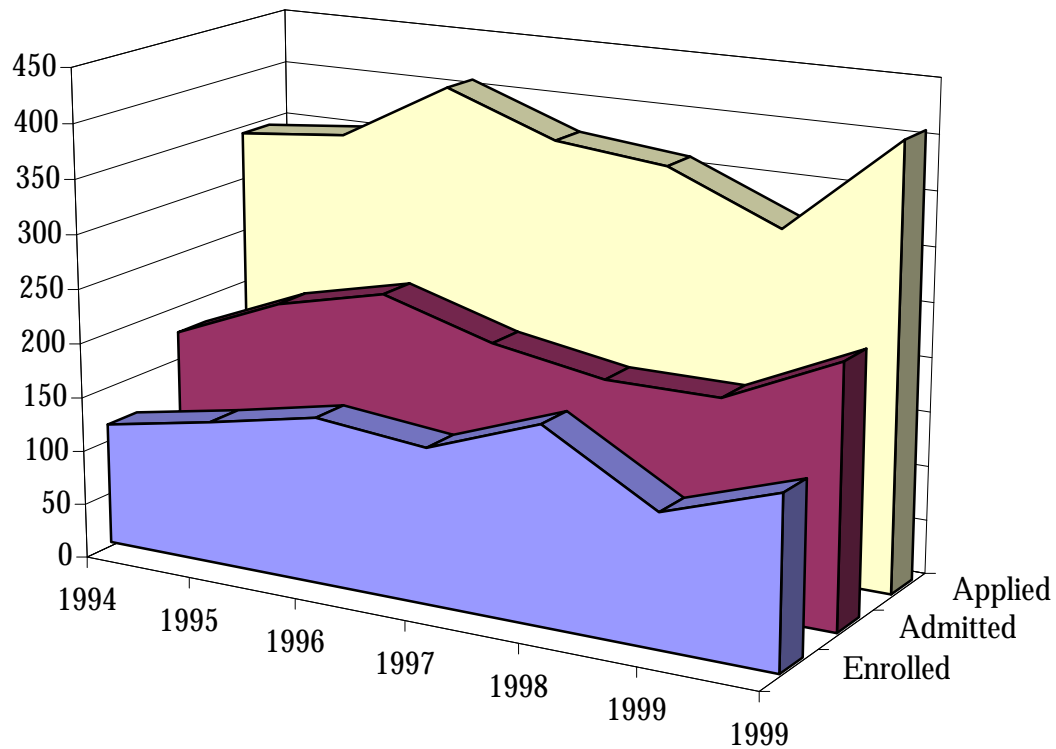
Extension Online Programs and Continuing Education Units/CEUs	868	1,036	1,063
Center for Global Education	4,617	1,097	1,434
Summer, Evening, and Weekend Programs	1,670	1,996	1,924
Conferences, Training, and Program Support	1,604	4,903	5,337
Regional Centers			
Flagler College, FL	5,399	3,471	6,093
Johnson Co. Community College, KS	11,769	7,097	4,202
Kapiolani Community College, HI	3,026	3,577	2,900
Northern Essex Community College, MA	5,758	5,126	5,287
Ohlone College, CA	3,852	4,055	4,338
Total	38,563	32,358	32,578

Admissions

**TABLE 13: FALL 2000 UNDERGRADUATE ADMISSIONS SUMMARY
AND HISTORY OF FALL APPLICATIONS, ADMISSIONS, AND
REGISTRATIONS 1994-2000**

	Applied	Admitted	Enrolled	Enrollment Yield
2000				
New Freshmen	464	309	238	77%
Transfers	145	124	79	64%
Degree-seeking	609	433	317	73%
Special/Others	39	35	28	80%
TOTAL	648	468	345	74%
<hr/> <hr/>				
1999				
Degree-seeking	642	479	324	68%
Special/Others	48	40	22	55%
TOTAL	690	519	346	67%
1998				
Degree-seeking	554	427	331	78%
Special/Others	44	44	36	82%
TOTAL	598	471	367	78%
1997				
Degree-seeking	688	514	304	59%
Special/Others	74	65	25	38%
TOTAL	762	579	329	57%
1996				
Degree-seeking	733	499	251	50%
Special/Others	70	70	31	44%
TOTAL	803	569	282	50%
1995				
Degree-seeking	738	525	294	56%
Special/Others	76	75	31	41%
TOTAL	814	600	325	54%
1994				
Degree-seeking	838	632	393	62%
Special/Others	90	90	37	41%
TOTAL	928	722	430	60%

TABLE 14: FALL GRADUATE DEGREE-SEEKING APPLICATIONS, ADMISSIONS, AND REGISTRATIONS 1994-2000

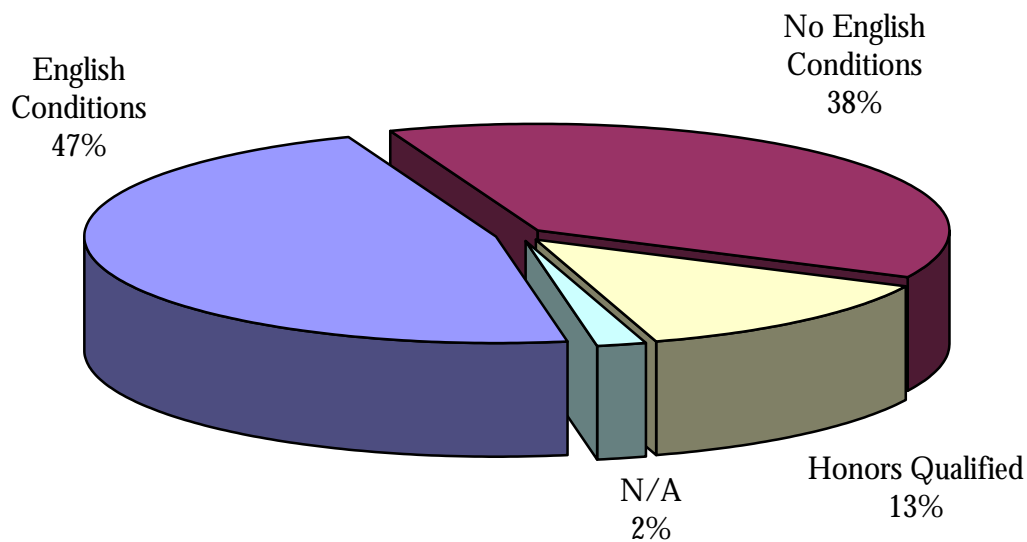


	1994	1995	1996	1997	1998	1999	1999
Enrolled	112	131	152	142	180	121	156
Admitted	172	214	238	208	191	191	239
Applied	340	350	406	369	358	315	406

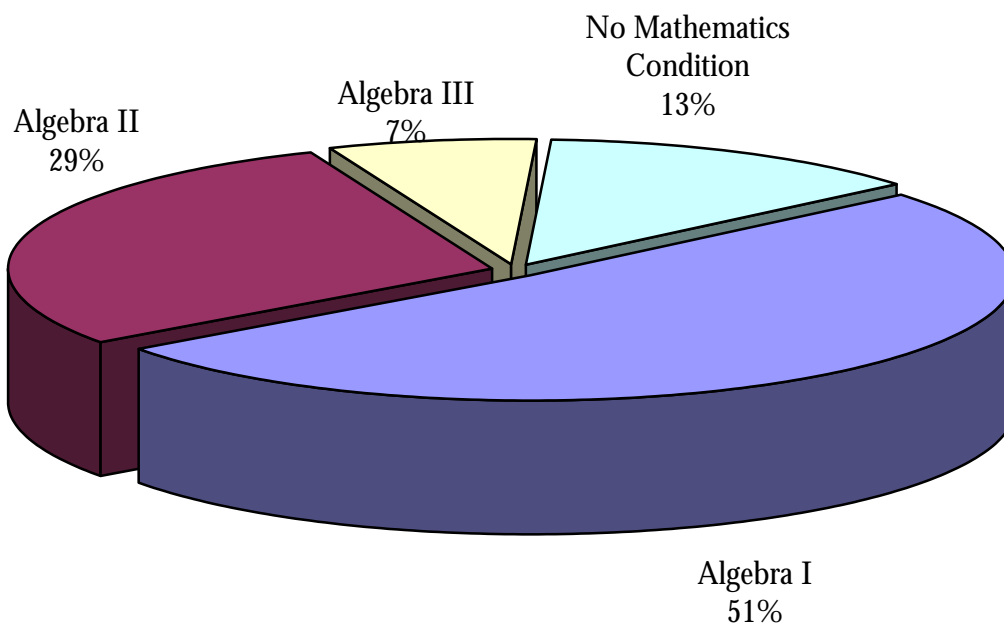
TABLE 15: FALL 2000 NEW DEGREE-SEEKING UNDERGRADUATE STUDENTS BY DEMOGRAPHIC CHARACTERISTICS

Age			Deafness in Family		
17	7	2%	Deaf Family Member(s)	75	24%
18	103	32%	Both Parents	45	14%
19	100	32%	One Parent	9	3%
20	31	10%	Sibling(s)	63	20%
21	14	4%			
22	15	5%			
23-25	22	7%	Ethnic Background		
26-29	3	1%	International	31	10%
30 and over	22	7%	African-American	36	11%
			Asian-American	22	7%
			Native American	4	1%
			Hispanic/Latino	23	7%
Sex			Caucasian	196	62%
Men	161	51%	Refused/Unknown	5	2%
Women	156	49%			

FIGURE 2: FALL 2000 NEW DEGREE-SEEKING UNDERGRADUATE STUDENTS BY ENGLISH AND MATHEMATICS PLACEMENT TEST PERFORMANCE



English Placement Test Performance



Mathematics Placement Test Performance

TABLE 16: FALL 2000 NEW DEGREE-SEEKING GRADUATE STUDENTS BY DEMOGRAPHIC CHARACTERISTICS AND PROGRAMS

Age			Hearing Status		
20-29	100	64%	Deaf/Hard of Hearing	57	37%
30-39	35	22%	Hearing	99	63%
40-49	15	10%			
50 and over	6	4%			
Sex			Ethnic Background		
Men	27	17%	International	8	5%
Women	129	83%	African-American	17	11%
			Asian-American	5	3%
			Native-American	0	0%
			Hispanic/Latino	6	4%
			Caucasian	109	70%
			Refused/Unknown	11	7%

College of Arts and Sciences

History	10	6%
Psychology	13	8%
Social Work	18	12%

School of Communication

Audiology & Speech- Language Pathology	28	18%
Linguistics and Interpreting	18	12%

School of Education and Human Services

Administration & Supervision	13	8%
Counseling	17	11%
Education	35	22%
Recreation & Leisure Studies	4	3%

Graduation, Persistence and Attrition

**TABLE 17: UNDERGRADUATE ONE-YEAR GRADUATION,
ATTRITION AND PERSISTENCE**

	Enrolled Fall 1999	Graduated	Dismissed	Withdrew	Persisted to Fall 2000
TOTAL	1,203	115	40	291	757
Percentage		10%	3%	24%	63%
<i>By Class</i>					
Freshmen	503	0 0%	26 5%	158 31%	319 63%
Sophomores	221	0 0%	10 5%	35 16%	176 80%
Juniors	218	4 2%	3 1%	36 17%	175 80%
Seniors	248	109 44%	1 0%	56 23%	82 33%
Second Degree	13	2 15%	0 0%	6 46%	5 38%
<i>By Gender</i>					
Men	557	54 10%	24 4%	142 25%	337 61%
Women	646	61 9%	16 2%	149 23%	420 65%
<i>By Ethnic Background</i>					
International	139	14 10%	6 4%	26 19%	93 67%
African-American	119	8 7%	5 4%	34 29%	72 61%
Native American	9	2 22%	1 11%	3 33%	3 33%
Asian-American	49	4 8%	0 0%	11 22%	34 69%
Hispanic/Latino	74	7 9%	3 4%	18 24%	46 62%
Caucasian	758	75 10%	19 3%	192 25%	472 62%
Refused/Unknown	55	5 9%	6 11%	7 13%	37 67%

FIGURE 3: UNDERGRADUATE ONE-YEAR ATTRITION TRENDS 1989-2000

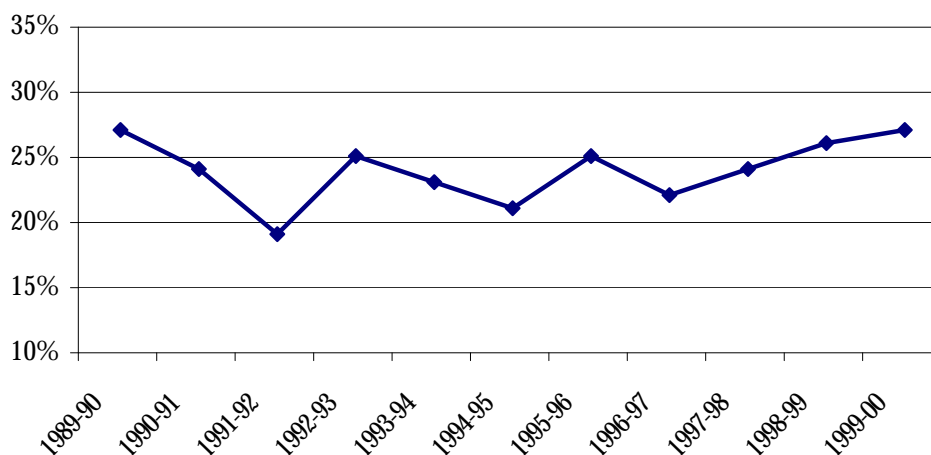


TABLE 18: UNDERGRADUATE ONE-YEAR ATTRITION BY CLASS, GENDER, AND RACE/ETHNICITY 1989-2000

	1989-90	1990-91	1991-92	1992-93	1993-94	1994-95	1995-96	1996-97	1997-98	1998-99	1999-00
TOTAL	27%	24%	19%	25%	23%	21%	25%	22%	24%	26%	27%
<i>By Class</i>											
Freshmen	32%	31%	28%	36%	34%	33%	38%	35%	38%	36%	36%
Sophomores	21%	16%	17%	22%	15%	19%	22%	19%	20%	16%	21%
Juniors	10%	11%	11%	12%	11%	11%	13%	13%	13%	20%	18%
Seniors	16%	10%	9%	9%	6%	6%	10%	11%	12%	19%	23%
Second Degree	N/A	N/A	N/A	N/A	N/A	N/A	N/A	N/A	N/A	N/A	46%
<i>By Gender</i>											
Men	26%	24%	19%	19%	25%	24%	27%	26%	25%	30%	29%
Women	22%	19%	20%	20%	21%	19%	23%	19%	22%	22%	25%
<i>By Ethnic Background</i>											
Caucasians	24%	21%	19%	25%	23%	21%	25%	23%	23%	25%	28%
Non-white	29%	27%	28%	24%	32%	24%	26%	24%	28%	30%	30%

TABLE 19: LONG-TERM RETENTION RATE OF ENTERING UNDERGRADUATE CLASSES 1995-1999

	Number originally enrolled	Retained					Graduated	
		After 1 year	After 2 years	After 3 years	After 4 years	After 5 years	Within 4 years	Within 5 years
<i>All Students</i>								
1995	291	60%	45%	39%	27%	16%	9%	16%
1996	237	62%	46%	33%	28%		5%	
1997	293	66%	45%	40%				
1998	331	60%	47%					
1999	322	63%						
<i>First-time Students</i>								
1995	229	60%	44%	41%	28%	18%	6%	14%
1996	183	60%	45%	33%	31%		3%	
1997	215	67%	41%	40%				
1998	230	63%	49%					
1999	254	61%						
<i>Transfer Students</i>								
1995	62	59%	48%	34%	21%	11%	19%	23%
1996	54	70%	52%	35%	20%		9%	
1997	78	63%	55%	40%				
1998	101	54%	42%					
1999	68	69%						

**TABLE 20: DEGREES AWARDED
ACADEMIC YEARS 1989-1999**

	Associates	Bachelors	Masters	Specialists	Doctoral	TOTAL
1989-90	5	177	87	1	2	272
1990-91	5	204	106	10	4	329
1991-92	13	230	95	4	3	345
1992-93	7	249	81	6	1	344
1993-94	8	227	113	8	6	362
1994-95	6	231	110	9	9	365
1995-96	8	185	108	7	12	320
1996-97	0	201	102	8	5	316
1997-98	0	174	98	8	5	285
1998-99	0	146	125	8	7	286
1999-00	0	153	132	6	6	297

**TABLE 21: DEGREES AWARDED
BY GENDER AND RACE/ETHNICITY
ACADEMIC YEAR 1999-2000**

	Bachelors	Masters	Specialists	Doctoral
Men	73	21	1	1
Women	80	111	5	5
<i>By Ethnic Background</i>				
International	19	4	0	1
African-American	11	4	0	0
Asian-American	5	2	0	0
Native American	2	0	0	0
Hispanic/Latino	7	6	0	0
Caucasian	105	114	6	5
Refused/Unknown	4	2	0	0
TOTAL	153	132	6	6

**TABLE 22: UNDERGRADUATE DEGREES BY DISCIPLINE
ACADEMIC YEAR 1999-2000**

Bachelor of Arts		Bachelor of Science	
American Sign Language	7	Accounting	6
Art	6	Business Administration	7
Biology	8	Computer Information Systems	13
Chemistry	0	Economics & Finance	1
Communication Arts	16	Entrepreneurial Studies	1
Computer Science	6	Family & Consumer Studies	11
Deaf Studies	9	Physical Education	6
Education	9	Recreation & Leisure Studies	4
English	5		
Government	6		
History	6	Subtotal	49
Mathematics	3		
Philosophy	0		
Physics	1		
Psychology	17		
Sign Communication	0		
Social Work	9		
Sociology	4		
Spanish	4		
Television & Photography	3		
Theater Arts	0		
Subtotal	119		
<hr/>		<hr/>	
TOTAL*			168
<hr/>		<hr/>	

* Total includes 13 double majors and 1 triple major.

**TABLE 23: GRADUATE DEGREES BY DISCIPLINE
ACADEMIC YEAR 1999-2000**

Master of Arts		Master of Social Work	
Clinical Psychology	12	Social Work	19
Developmental Psychology	9		
Linguistics	10	Subtotal	19
Interpreting	7		
Mental Health Counseling	8	Specialist	
School Counseling & Guidance	1	Administration & Supervision	1
Community Counseling	5	Educational Specialist	0
Rehabilitation Counseling	0	School Psychology	5
Education			
Advanced Studies in Education	3	Subtotal	6
Family-centered Early Education	7		
Elementary Education	12	Doctor of Philosophy	
Multiple Disabilities	4	Administration & Supervision	1
Non-degree Teacher Certification	0	Clinical Psychology	4
Secondary	7	Deaf Education	1
Special Education in Deafness	2		
Subtotal	87	Subtotal	6
Master of Science			
Administration	15		
Audiology	0		
Speech-Language Pathology	11		
Subtotal	26		
<hr/>		<hr/>	
TOTAL			144
<hr/>		<hr/>	