

2001 Enrollment Report

Gallaudet  **University**

Office of Institutional Research
June 2002

TABLE OF CONTENTS

Introduction	3
--------------	---

ENROLLMENT

Table 1:	Fall 2001 Enrollment	5
Table 2:	Fall Enrollment History 1990-2001	6
Table 3:	Deaf/Hearing & Racial/Ethnic Characteristics of Fall 2001 Enrollment	8
Figure 1:	Deaf/Hearing & Racial/Ethnic Distribution of Fall 2001 Enrollment	9
Table 4:	Fall Enrollment History by Racial/Ethnic Distribution 1990-2001	10
Table 5:	Fall 2001 U.S. Enrollment by State	11
Table 6:	Fall 2001 International Enrollment by Country	12
Table 7:	Fall 2001 Full- and Part-Time Enrollment by Gender	13
Table 8:	Fall 2001 Undergraduate Majors by Department	14
Table 9:	Fall 2001 Graduate Majors	15
Table 10:	Total Annual Enrollment Academic Year 2000-2001	16
Table 11:	Annual Unduplicated Headcount Enrollment Academic Years 1995 to 2001	17
Table 12:	Annual Institutional Activity Academic Years 1997-2000	18

ADMISSIONS

Table 13:	Fall 2001 Undergraduate Admissions Summary and History of Fall Applications, Admissions, and Registrations 1995-2001	20
Table 14:	Fall Graduate Degree-Seeking Applications, Admissions, and Registrations 1995-2001	21
Table 15:	Fall 2001 New Degree-Seeking Undergraduate Students by Demographic Characteristics	22
Figure 2:	Fall 2001 New Degree-Seeking Undergraduate Students by English & Mathematics Placement Test Performance	23
Table 16:	Fall 2001 New Degree-Seeking Graduate Students by Demographic Characteristics and Programs	24

GRADUATION, PERSISTENCE, AND ATTRITION

Table 17:	Undergraduate One-Year Graduation, Attrition, and Persistence	26
Figure 3:	Undergraduate One-Year Attrition Trends 1990-2001	27
Table 18:	Undergraduate One-Year Attrition by Class, Gender, and Race/Ethnicity 1990-2001	27
Table 19:	Long-Term Retention Rate of Entering Undergraduate Classes 1995-2000	28
Table 20:	Degrees Awarded Academic Years 1989-2000	29
Table 21:	Degrees Awarded by Gender and Race/Ethnicity Academic Year 2000-2001	30
Table 22:	Undergraduate Degrees by Discipline Academic Year 2000-2001	31
Table 23:	Graduate Degrees by Discipline Academic Year 2000-2001	32

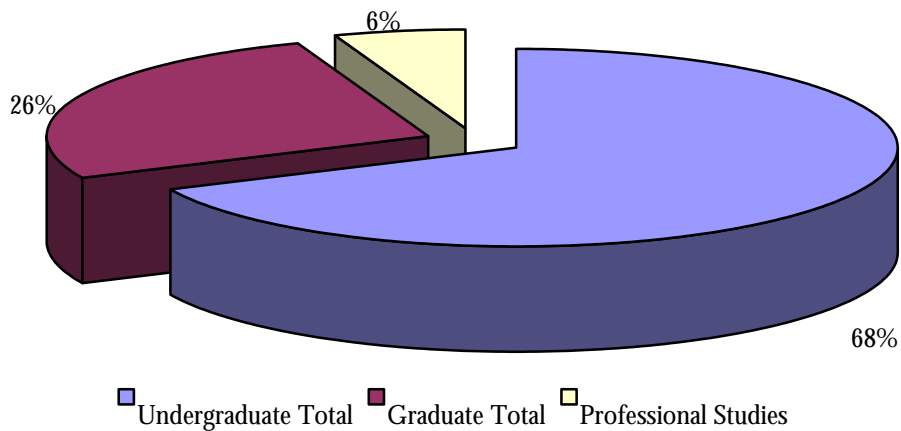
INTRODUCTION

Gallaudet University's total enrollment for fall 2001 is 1,826. This includes 1,245 undergraduate, 478 graduate, and 103 professional studies students. Many of the tables in this report focus on the 1,147 degree-seeking undergraduate and 355 degree-seeking graduate students. The Office of Institutional Research welcomes suggestions from members of the Gallaudet community on how the content and format of this report could be improved.

Enrollment

TABLE 1: FALL 2001 ENROLLMENT

Freshmen	451
Sophomores	223
Juniors	212
Seniors	250
Second Degree	11
Undergraduate Special	36
Exchange	1
Visiting	13
Undergraduate Extension	21
International Interns	6
English Language Institute	21
Undergraduate Total	1,245
Masters	233
Educational Specialist	0
Doctoral	113
Certificate	9
Graduate Special	35
Graduate Extension	88
International Interns	0
Graduate Total	478
Professional Studies	103
TOTAL	1,826



**TABLE 2: FALL ENROLLMENT HISTORY
1990-2001**

	1990	1991	1992	1993	1994	1995
Preparatory	247	196	228	180	161	
A.A.S.	23	28	27	21	18	8
Freshmen	587	502	507	552	511	583
Sophomores	317	299	285	256	289	264
Juniors	302	299	302	260	265	274
Seniors	304	323	336	315	297	287
Second Degree			17	11	8	12
Undergraduate Special	39	41	44	51	38	48
Exchange	1	1	2	2	5	0
Visiting	5	9	12	12	10	10
Undergraduate Extension						
International Interns						
English Language Institute						
Undergraduate Total	1,825	1,698	1,760	1,660	1,602	1,486
Masters	239	228	243	256	236	243
Educational Specialist	1	0	0	0	2	1
Doctoral	34	37	45	58	65	71
Summer Study	6	6	0	5	9	6
Certificate						
Graduate Special	88	69	69	52	60	68
Graduate Extension	75	75	64	68	89	205
International Interns						
Graduate Total	443	415	421	439	461	594
Professional Studies	116	130	79	102	112	128
TOTAL	2,384	2,243	2,260	2,201	2,175	2,208

**TABLE 2: FALL ENROLLMENT HISTORY
1990-2001**

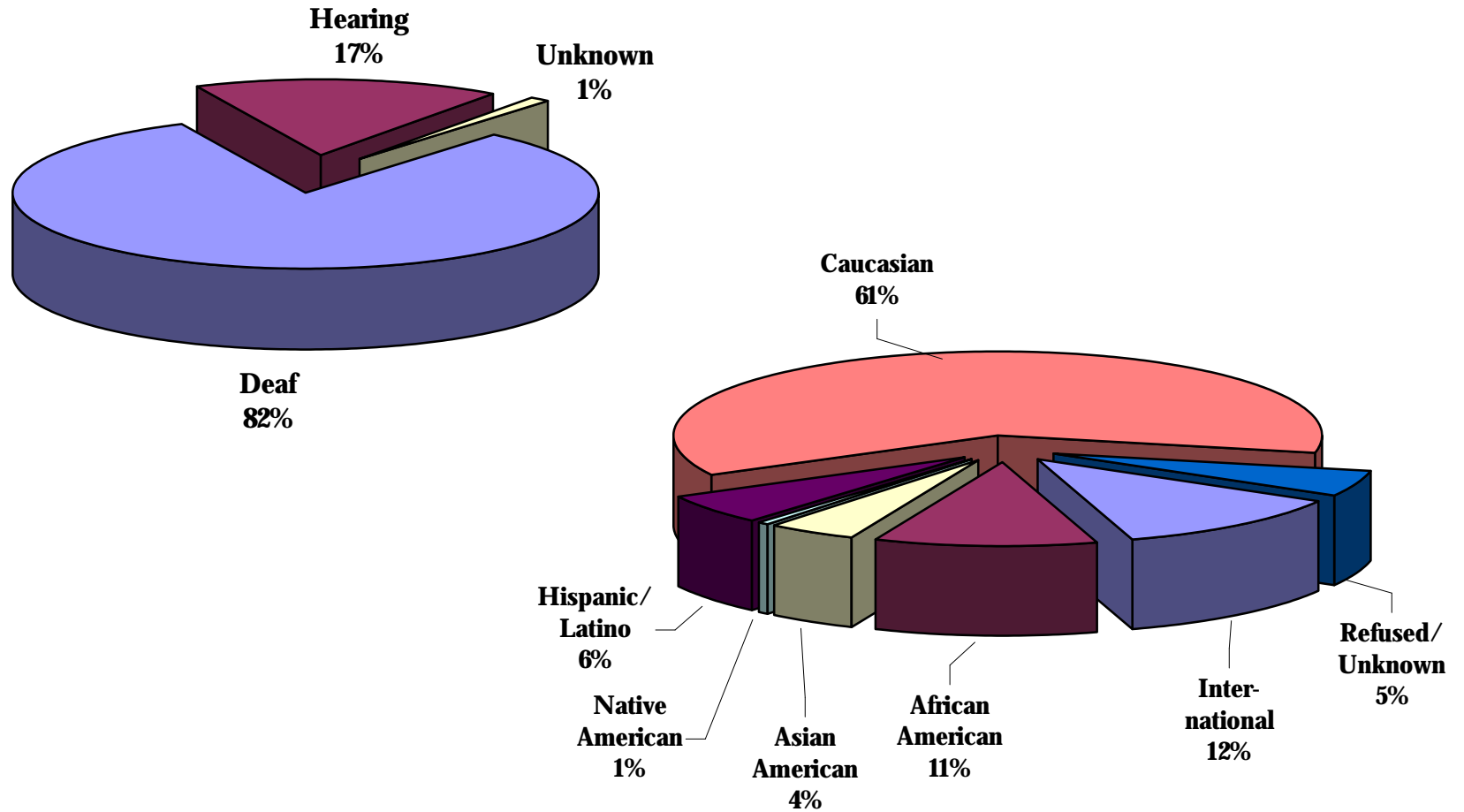
	1996	1997	1998	1999	2000	2001
Preparatory						
A.A.S.						
Freshmen	481	476	501	503	537	451
Sophomores	243	260	220	221	210	223
Juniors	245	216	240	218	202	212
Seniors	284	256	236	248	233	250
Second Degree	8	11	20	13	6	11
Undergraduate Special	31	27	36	25	41	36
Exchange	1	0	0	0	0	1
Visiting	9	5	10	10	6	13
Undergraduate Extension	42	88	32	74	63	21
International Interns			5	6	0	6
English Language Institute					23	21
Undergraduate Total	1,344	1,339	1,300	1,318	1,321	1,245
Masters	261	280	302	285	253	233
Educational Specialist	0	1	0	2	2	0
Doctoral	71	79	81	95	103	113
Summer Study	11	14	17	0	0	0
Certificate	1	0	1	0	10	9
Graduate Special	54	72	40	35	63	35
Graduate Extension	178	268	185	124	194	88
International Interns			2	0	0	0
Graduate Total	576	714	628	541	625	478
Professional Studies	114	92	70	86	93	103
TOTAL	2,034	2,145	1,998	1,945	2,039	1,826

**TABLE 3: DEAF/HEARING AND RACIAL/ETHNIC CHARACTERISTICS
OF FALL 2001 ENROLLMENT***

	Deaf	Hearing	Unknown	Inter- national	African American	Asian American	Native American	Hispanic/ Latino	Caucasian	Refused/ Unknown
Freshman	446	1	4	66	58	23	2	40	247	15
Sophomores	219	2	2	20	28	11	2	12	145	5
Juniors	204	4	4	26	19	9	1	12	135	10
Seniors	248	1	1	24	22	13	1	16	160	14
Second Degree	11	0	0	3	0	2	0	0	6	0
Undergraduate Special	28	8	0	1	8	0	0	1	25	1
Exchange	0	1	0	0	0	0	0	0	0	1
Visiting	4	9	0	0	1	1	0	1	9	1
International Interns	6	0	0	6	0	0	0	0	0	0
English Language Institute	21	0	0	19	0	0	0	0	1	1
Undergraduate Total	1,187	26	11	165	136	59	6	82	728	48
Masters	85	146	2	20	28	5	0	7	156	17
Educational Specialist	0	0	0	0	0	0	0	0	0	0
Doctoral	29	82	2	4	14	8	0	5	73	9
Certificate	1	8	0	0	0	0	0	0	6	3
Graduate Special	22	12	1	5	2	0	0	0	26	2
International Interns	0	0	0	0	0	0	0	0	0	0
Graduate Total	137	248	5	29	44	13	0	12	261	31
TOTAL	1,324	274	16	194	180	72	6	94	989	79

* Numbers do not include extension students.

FIGURE 1: DEAF/HEARING AND RACIAL/ETHNIC DISTRIBUTION OF FALL 2001 ENROLLMENT*



6

* Numbers do not include extension students.

**TABLE 4: FALL ENROLLMENT HISTORY
BY RACIAL/ETHNIC DISTRIBUTION*
1990-2001**

	1990	1991	1992	1993	1994	1995	1996	1997	1998	1999	2000	2001
Undergraduate												
International	14%	15%	16%	11%	11%	13%	13%	12%	13%	12%	13%	13%
African-American	7%	7%	7%	9%	9%	10%	10%	11%	11%	10%	10%	11%
Asian-American	1%	2%	2%	2%	4%	4%	4%	4%	4%	4%	5%	5%
Native-American	0%	0%	0%	1%	1%	1%	1%	1%	1%	1%	1%	1%
Hispanic/Latino	4%	4%	3%	5%	6%	5%	5%	6%	7%	6%	6%	7%
Caucasian	73%	71%	69%	70%	67%	65%	63%	62%	61%	63%	60%	59%
Refused/Unknown	0%	1%	2%	3%	3%	3%	3%	4%	4%	5%	6%	4%
Graduate												
International	10%	11%	9%	10%	8%	8%	9%	6%	5%	4%	4%	7%
African-American	5%	5%	6%	7%	7%	8%	8%	9%	8%	8%	8%	11%
Asian-American	1%	1%	2%	2%	1%	1%	2%	2%	2%	2%	2%	3%
Native-American	0%	0%	0%	0%	1%	0%	0%	0%	1%	0%	0%	0%
Hispanic/Latino	2%	2%	2%	2%	3%	3%	4%	4%	4%	4%	3%	3%
Caucasian	80%	78%	79%	78%	78%	72%	68%	69%	75%	78%	72%	67%
Refused/Unknown	2%	1%	2%	2%	3%	8%	10%	11%	5%	4%	10%	8%
TOTAL ENROLLMENT												
International	14%	15%	15%	11%	10%	12%	12%	11%	11%	10%	10%	12%
African-American	6%	7%	7%	8%	9%	9%	10%	10%	10%	9%	10%	11%
Asian-American	1%	2%	2%	2%	3%	3%	4%	4%	4%	3%	4%	4%
Native-American	0%	0%	0%	1%	1%	1%	1%	1%	1%	1%	1%	1%
Hispanic/Latino	3%	3%	3%	4%	5%	5%	5%	5%	6%	6%	6%	6%
Caucasian	74%	72%	71%	71%	69%	66%	64%	64%	65%	67%	62%	61%
Refused/Unknown	1%	1%	2%	3%	3%	4%	5%	6%	4%	4%	7%	5%

* Numbers do not include extension students.

TABLE 6: FALL 2001 INTERNATIONAL ENROLLMENT BY COUNTRY*

	Undergraduate			Graduate			ELI **		
Argentina	0	1	0	Kenya	1	0	0		
Austria	0	0	0	Korea, Republic of	1	0	2		
Barbados	0	0	2	Kuwait	0	0	1		
Belgium	3	0	0	Latvia	0	0	0		
Bermuda	0	0	1	Lebanon	1	0	1		
Botswana	1	0	1	Malaysia	1	0	0		
Brazil	1	1	1	Mexico	0	0	0		
Burundi	0	0	0	Mongolia	0	1	0		
Cameroon	0	1	0	Netherlands	4	0	0		
Canada	59	4	0	New Zealand	0	1	0		
China	7	2	1	Nigeria	1	1	0		
Colombia	0	0	0	Norway	1	1	0		
Congo	1	0	0	Pakistan	0	0	0		
Croatia	2	0	0	Panama	0	0	0		
Czech Republic	1	1	0	Philippines	2	1	0		
Ethiopia	0	0	0	Russian Federation	2	0	0		
Finland	1	0	0	Rwanda	0	0	0		
France	2	0	0	Saudi Arabia	1	0	1		
Germany	1	0	0	Singapore	1	0	0		
Guatemala	0	0	0	Slovakia	0	0	0		
Haiti	1	0	0	South Africa	2	0	0		
Hong Kong	1	0	0	Spain	1	0	1		
Iceland	1	0	0	Sri Lanka	0	0	0		
India	3	1	1	Sweden	5	0	1		
Indonesia	1	0	0	Switzerland	1	0	0		
Iran (Islamic Republic C	0	0	0	Taiwan, Province of Chin	4	1	0		
Ireland	1	0	1	Thailand	2	0	0		
Israel	2	1	0	Trinidad and Tobago	0	1	0		
Italy	1	0	0	Uganda	0	1	0		
Jamaica	1	0	0	United Arab Emirates	2	0	1		
Japan	4	3	2	United Kingdom	0	0	0		
Jordan	0	0	0	Uzbekistan	1	0	0		
TOTAL STUDENTS					129	23	18		
TOTAL COUNTRIES					40	17	15		

* The countries of origin for ten undergraduates and one ELI student are unknown.

** English Language Institute

**TABLE 7: FALL 2001 FULL- AND PART-TIME
ENROLLMENT BY GENDER**

	Full-time		Part-time	
	Women	Men	Women	Men
Freshman	229	211	5	6
Sophomores	105	106	4	8
Juniors	113	92	2	5
Seniors	123	107	9	11
Second Degree	5	4	0	2
Undergraduate Special	1	1	20	14
Exchange	1	0	0	0
Visiting	10	1	1	1
International Interns	1	0	2	3
English Language Institute	6	13	1	1
Undergraduate Total	594	535	44	51
Masters	180	27	21	5
Educational Specialist	0	0	0	0
Doctoral	65	11	26	11
Certificate	0	1	8	0
Graduate Special	14	3	12	6
International Interns	0	0	0	0
Graduate Total	259	42	67	22
TOTAL	853	577	111	73

**TABLE 8: FALL 2001 UNDERGRADUATE MAJORS
BY DEPARTMENT**

College of Liberal Arts, Sciences, and Technologies		Graduate School and Professional Programs	
Art	51	Accounting	25
Biology	35	American Sign Language	14
Chemistry	6	Business Administration	33
Communication Arts	44	Computer Information Systems	15
Computer Science	20	Economics & Finance	9
Deaf Studies	21	Education	57
Digital Media	0	Entrepreneurial Studies	2
English	16	Physical Education	19
Family & Consumer Studies	24	Recreation & Leisure Studies	13
French	3		
Government	26	Subtotal	187
History	27		
Mathematics	11		
Philosophy	4		
Psychology	39		
Self-Directed: Religion	1		
Social Work	30		
Sociology	17		
Spanish	7		
Television & Photography	14		
Theatre Arts	11		
Subtotal	407		
<hr/> TOTAL		<hr/> 594 <hr/>	

TABLE 9: FALL 2001 GRADUATE MAJORS

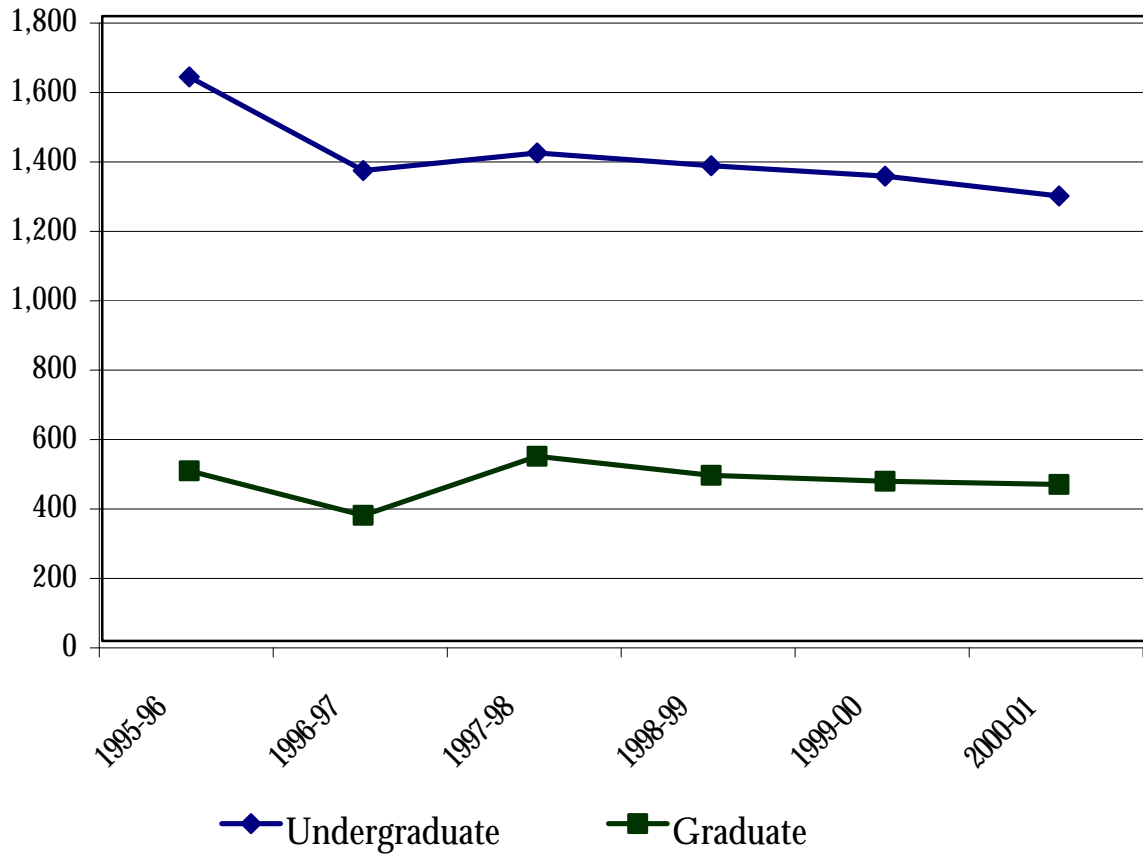
College of Liberal Arts, Science, and Technologies		Graduate School and Professional Programs (cont'd)	
Department of Government and History		Counseling	
Deaf History, Certificate	1	Mental Health Counseling, M.A.	18
Department of Psychology		Community Counseling, M.A.	2
Clinical Psychology, Ph.D.	28	School Counseling and Guidance, M.A.	10
Clinical Psychology, M.A.	1	Education	
Developmental Psychology, M.A.	6	Advanced Studies Education, M.A.	2
School Psychology, M.A. / Specialist	12	Deaf Education, Ph.D.	18
Department of Social Work		Deaf Education, Ed.S.	0
Social Work, M.S.W.	42	Family Centered Early Education, Education, M.A.	17
Subtotal		Elementary Education, M.A.	23
	90	Secondary Education, M.A.	7
		Multiple Disabilities Ed., M.A.	12
		Special Programs in Deafness, M.A.	6
		Educational Foundations and Research	
Graduate School and Professional Programs		Integrated Technology, Certificate	8
Administration and Supervision		Linguistics and Interpretation	
Administration, M.S.	11	Linguistics, M.A.	15
Instructional Supervision, Ed.S.	0	Interpretation, M.A.	22
Special Education Admin., Ph.D.	29	Physical Education and Recreation	
Leadership, Certificate	0	Leisure Services Admin, M.S.	4
Management, Certificate	0	Subtotal	
Audiology and Speech-Language Pathology			264
Audiology, Au.D.	38		
Speech-Language Pathology, M.A.	22		
TOTAL		354	

**TABLE 10: TOTAL ANNUAL ENROLLMENT
ACADEMIC YEAR 2000-2001**

	Fall 2000	Spring 2001	Summer 2001
Freshmen	537	352	34
Sophomores	210	222	39
Juniors	202	215	68
Seniors	233	294	97
Second Degree	6	8	2
Undergraduate Special	41	46	5
Exchange	0	0	0
Visiting	6	9	0
Undergraduate Extension	63	63	0
International Interns	0	1	0
English Language Institute	23	23	2
Undergraduate Total	1,321	1,233	247
Masters	253	243	67
Educational Specialist	2	0	0
Doctoral	103	101	51
Certificate	10	48	3
Graduate Special	63	34	19
Graduate Extension	194	194	0
International Interns	0	0	0
Graduate Total	625	620	140
Professional Studies	93	108	303
TOTAL	2,039	1,961	690

TABLE 11: ANNUAL UNDUPLICATED HEADCOUNT ENROLLMENT ACADEMIC YEARS 1995 TO 2001*

	1995-96	1996-97	1997-98	1998-99	1999-00	2000-01
Undergraduate	1,625	1,355	1,406	1,369	1,339	1,282
Graduate	490	362	532	477	460	451



** This is an unduplicated count of the total number of students by level enrolled during the 12-month reporting period in any courses that can lead to a degree or other formal award.*

**TABLE 12: ANNUAL INSTITUTIONAL ACTIVITY
ACADEMIC YEARS 1997-2001**

	1997-98	1998-99	1999-00	2000-01
Institutional and Degree Credit Hours				
Undergraduate	40,042	39,408	34,558	37,332
Graduate	10,269	10,280	9,215	9,078
Total	50,311	49,688	43,773	46,410

Student Support Contact Hours

Tutorial Services	14,385	9,375	6,318	7,970
Academic Advising	10,400	12,000	12,500	12,110
Career Center	6,575	6,590	7,450	9,529
Students with Disabilities	7,300	7,000	7,300	7,700
Counseling Services	17,994	17,400	13,723	20,880
Student Affairs	77,597	75,250	76,807	102,856
Total	134,251	127,615	124,098	161,045

College for Continuing Education Participants

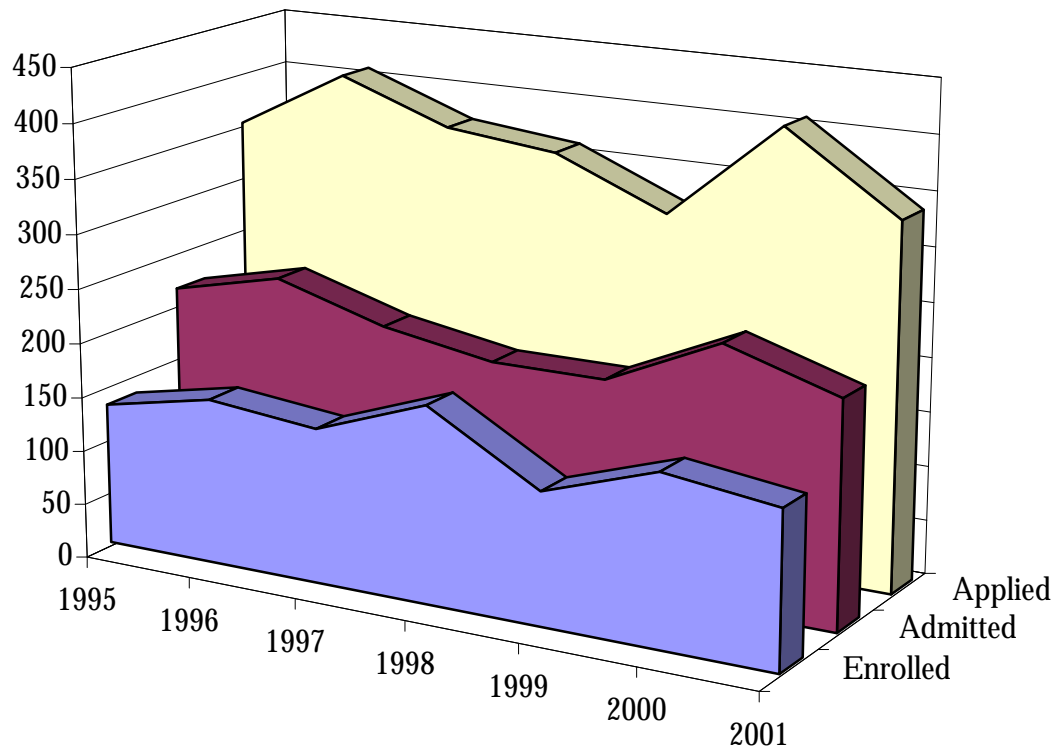
Extension Online Programs and Continuing Education Units/CEUs	868	1,036	1,063	610
Center for Global Education	4,617	1,097	1,434	1,495
Summer, Evening, and Weekend Programs	1,670	1,996	1,924	1,293
Conferences, Training, and Program Support	1,604	4,903	5,337	5,262
Regional Centers				
Flagler College, FL	5,399	3,471	6,093	5,127
Johnson County Community College, KS	11,769	7,097	4,202	5,638
Kapiolani Community College, HI	3,026	3,577	2,900	3,865
Northern Essex Community College, MA	5,758	5,126	5,287	4,382
Ohlone College, CA	3,852	4,055	4,338	5,766
Total	38,563	32,358	32,578	33,438

Admissions

**TABLE 13: FALL 2001 UNDERGRADUATE ADMISSIONS SUMMARY
AND HISTORY OF FALL APPLICATIONS, ADMISSIONS, AND
REGISTRATIONS 1995-2001**

	Applied	Admitted	Enrolled	Enrollment Yield
2001				
New Freshmen	n/a	288	220	76%
Transfers	n/a	99	60	61%
Degree-seeking	533	387	280	72%
Special/Others	69	61	45	74%
TOTAL	602	448	325	73%
<hr/> <hr/>				
2000				
Degree-seeking	609	433	317	73%
Special/Others	39	35	28	80%
TOTAL	648	468	345	74%
1999				
Degree-seeking	642	479	324	68%
Special/Others	48	40	22	55%
TOTAL	690	519	346	67%
1998				
Degree-seeking	554	427	331	78%
Special/Others	44	44	36	82%
TOTAL	598	471	367	78%
1997				
Degree-seeking	688	514	304	59%
Special/Others	74	65	25	38%
TOTAL	762	579	329	57%
1996				
Degree-seeking	733	499	251	50%
Special/Others	70	70	31	44%
TOTAL	803	569	282	50%
1995				
Degree-seeking	738	525	294	56%
Special/Others	76	75	31	41%
TOTAL	814	600	325	54%

TABLE 14: FALL GRADUATE DEGREE-SEEKING APPLICATIONS, ADMISSIONS, AND REGISTRATIONS 1995-2001

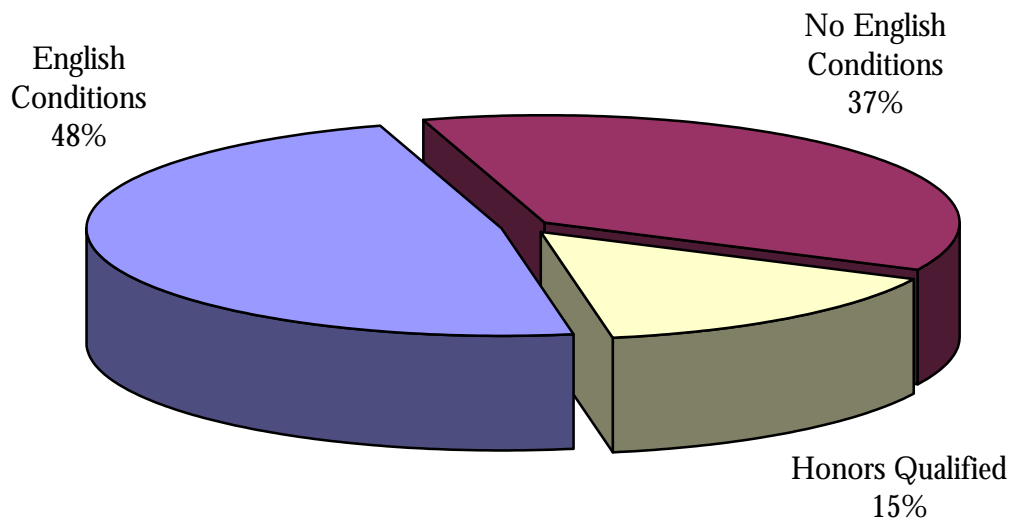


	1995	1996	1997	1998	1999	2000	2001
Enrolled	131	152	142	180	121	156	143
Admitted	214	238	208	191	191	239	207
Applied	350	406	369	358	315	406	336

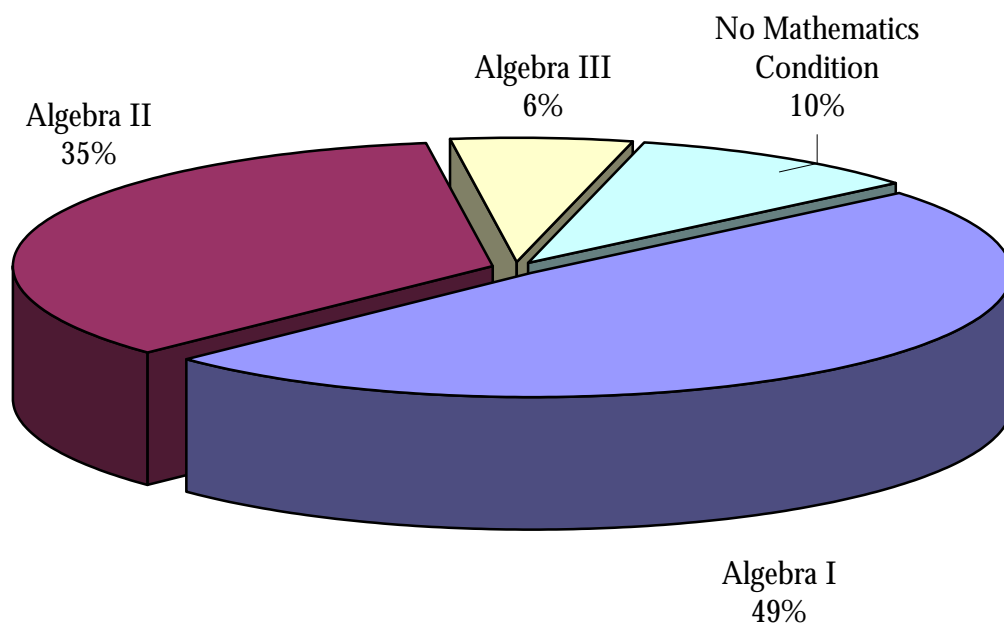
TABLE 15: FALL 2001 NEW DEGREE-SEEKING UNDERGRADUATE STUDENTS BY DEMOGRAPHIC CHARACTERISTICS

Age				Deafness in Family		
16	1	1%		Deaf Family Member(s)	70	25%
17	15	5%		Both Parents	47	17%
18	94	34%		One Parent	8	3%
19	61	22%		Sibling(s)	56	20%
20	29	10%				
21	21	8%				
22	13	5%		Ethnic Background		
23-25	21	7%		International	35	13%
26-29	11	4%		African-American	36	13%
30 and over	14	5%		Asian-American	9	3%
				Native American	1	1%
Sex				Hispanic/Latino	22	8%
Men	131	47%		Caucasian	166	59%
Women	149	53%		Refused/Unknown	11	4%

FIGURE 2: FALL 2001 NEW DEGREE-SEEKING UNDERGRADUATE STUDENTS BY ENGLISH AND MATHEMATICS PLACEMENT TEST PERFORMANCE



English Placement Test Performance



Mathematics Placement Test Performance

TABLE 16: FALL 2001 NEW DEGREE-SEEKING GRADUATE STUDENTS BY DEMOGRAPHIC CHARACTERISTICS AND PROGRAMS

Age			Hearing Status		
20-29	96	67%	Deaf/Hard of Hearing	47	33%
30-39	31	22%	Hearing	94	66%
40-49	10	7%	Refused/Unknown	2	1%
50 and over	6	4%			
Sex			Ethnic Background		
Men	16	11%	International	18	13%
Women	127	89%	African-American	17	12%
			Asian-American	5	3%
			Native-American	0	0%
			Hispanic/Latino	3	2%
			Caucasian	84	59%
			Refused/Unknown	16	11%

College of Liberal Arts, Sciences, and Technologies

History	1	1%
Psychology	13	9%
Social Work	16	11%

Graduate School and Professional Programs

Administration & Supervision	14	10%
Audiology & Speech-Language		
Pathology	23	16%
Counseling	18	13%
Education	29	20%
Educational Foundations & Research	9	6%
Linguistics and Interpreting	18	13%
Physical Education & Recreation	2	1%

Graduation, Persistence and Attrition

TABLE 17: UNDERGRADUATE ONE-YEAR GRADUATION, ATTRITION, AND PERSISTENCE

	Enrolled Fall 2000	Graduated	Dismissed	Withdrew	Persisted to Fall 2001
TOTAL	1,182	131	28	254	769
Percentage		11%	2%	21%	65%
<i>By Class</i>					
Freshmen	498	0 0%	18 4%	158 32%	322 65%
Sophomores	212	0 0%	6 3%	37 17%	169 80%
Juniors	223	7 3%	3 1%	27 12%	186 83%
Seniors	241	120 50%	1 1%	30 12%	90 37%
Second Degree	8	4 50%	0 0%	2 25%	2 25%
<i>By Gender</i>					
Men	555	48 9%	18 3%	120 22%	369 66%
Women	627	83 13%	10 2%	134 21%	400 64%
<i>By Ethnic Background</i>					
International	118	20 17%	6 5%	0 0%	92 78%
African-American	129	7 5%	5 4%	38 29%	79 61%
Native American	8	1 13%	0 0%	2 25%	5 63%
Asian-American	66	9 14%	1 2%	14 21%	42 64%
Hispanic/Latino	77	7 9%	1 1%	18 23%	51 66%
Caucasian	742	80 11%	15 2%	177 24%	470 63%
Refused/Unknown	42	7 17%	0 0%	5 12%	30 71%

FIGURE 3: UNDERGRADUATE ONE-YEAR ATTRITION TRENDS 1989-2001

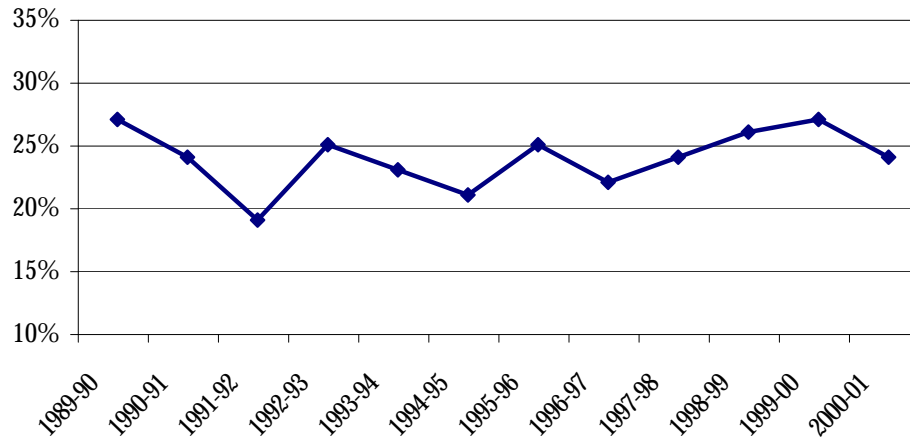


TABLE 18: UNDERGRADUATE ONE-YEAR ATTRITION BY CLASS, GENDER, AND RACE/ETHNICITY 1989-2001

	1989-90	1990-91	1991-92	1992-93	1993-94	1994-95	1995-96	1996-97	1997-98	1998-99	1999-00	2000-01
TOTAL	27%	24%	19%	25%	23%	21%	25%	22%	24%	26%	27%	23%
<i>By Class</i>												
Freshmen	32%	31%	28%	36%	34%	33%	38%	35%	38%	36%	36%	36%
Sophomores	21%	16%	17%	22%	15%	19%	22%	19%	20%	16%	21%	20%
Juniors	10%	11%	11%	12%	11%	11%	13%	13%	13%	20%	18%	13%
Seniors	16%	10%	9%	9%	6%	6%	10%	11%	12%	19%	23%	13%
Second Degree	N/A	N/A	N/A	N/A	N/A	N/A	N/A	N/A	N/A	N/A	46%	25%
<i>By Gender</i>												
Men	26%	24%	19%	19%	25%	24%	27%	26%	25%	30%	29%	25%
Women	22%	19%	20%	20%	21%	19%	23%	19%	22%	22%	25%	23%
<i>By Ethnic Background</i>												
Caucasians	24%	21%	19%	25%	23%	21%	25%	23%	23%	25%	28%	26%
Non-white	29%	27%	28%	24%	32%	24%	26%	24%	28%	30%	30%	21%

TABLE 19: LONG-TERM RETENTION RATE OF ENTERING UNDERGRADUATE CLASSES 1995-2000

	Number originally enrolled	Retained						Graduated		
		After 1 year	After 2 years	After 3 years	After 4 years	After 5 years	After 6 years	Within 4 years	Within 5 years	Within 6 years
<i>All Students</i>										
1995	291	60%	45%	39%	27%	16%	10%	9%	18%	25%
1996	237	62%	46%	33%	28%	16%		6%	14%	
1997	293	66%	45%	40%	29%			6%		
1998	331	60%	47%	40%						
1999	322	63%	49%							
2000	313	65%								
<i>First-time Students</i>										
1995	229	60%	44%	41%	28%	18%	12%	6%	16%	23%
1996	183	60%	45%	33%	31%	17%		4%	13%	
1997	215	67%	41%	40%	30%			3%		
1998	230	63%	49%	43%						
1999	254	61%	47%							
2000	241	66%								
<i>Transfer Students</i>										
1995	62	59%	48%	34%	21%	11%	3%	19%	26%	31%
1996	54	70%	52%	35%	20%	13%		11%	19%	
1997	78	63%	55%	40%	24%			15%		
1998	101	54%	42%	35%						
1999	68	69%	59%							
2000	72	61%								

**TABLE 20: DEGREES AWARDED
ACADEMIC YEARS 1989-2000**

	Associates	Bachelors	Masters	Specialists	Doctoral	TOTAL
1989-90	5	177	87	1	2	272
1990-91	5	204	106	10	4	329
1991-92	13	230	95	4	3	345
1992-93	7	249	81	6	1	344
1993-94	8	227	113	8	6	362
1994-95	6	231	110	9	9	365
1995-96	8	185	108	7	12	320
1996-97	0	201	102	8	5	316
1997-98	0	174	98	8	5	285
1998-99	0	146	125	8	7	286
1999-00	0	155	129	6	6	296
2000-01*	0	142	104	6	11	263

* Based on data provided to IPEDS, Fall 2001.

**TABLE 21: DEGREES AWARDED
BY GENDER AND RACE/ETHNICITY
ACADEMIC YEAR 2000-2001***

	Bachelors	Masters	Specialists	Doctoral
Men	52	22	0	2
Women	90	82	6	9
<i>By Ethnic Background</i>				
International	20	5	0	1
African-American	13	2	0	0
Asian-American	6	1	0	0
Native American	2	2	0	0
Hispanic/Latino	8	6	0	0
Caucasian	86	86	6	8
Refused/Unknown	7	2	0	2
TOTAL	142	104	6	11

* Based on data provided to IPEDS, Fall 2001.

**TABLE 22: UNDERGRADUATE DEGREES BY DISCIPLINE
ACADEMIC YEAR 2000-2001**

Bachelor of Arts		Bachelor of Science	
American Sign Language	6	Accounting	0
Art	7	Business Administration	9
Biology	5	Computer Information Systems	13
Chemistry	3	Economics	1
Communication Arts	15	Economics & Finance	2
Computer Science	3	Entrepreneurial Studies	0
Deaf Studies	8	Family & Consumer Studies	11
Education	11	Physical Education	6
English	5	Recreation & Leisure Studies	3
Government	4	Self-Directed: Education & English, Chinese	1
History	0	Self-Directed: Romance Language Studies	1
Journalism	2		
Mathematics	1	Subtotal	47
Philosophy	2		
Physics	0		
Psychology	19		
Sign Communication	0		
Social Work	14		
Sociology	2		
Spanish	1		
Television & Photography	2		
Theater Arts	2		
Subtotal	112		
<hr/> TOTAL*		<hr/> 159 <hr/>	

* Total excludes double majors.

**TABLE 23: GRADUATE DEGREES BY DISCIPLINE
ACADEMIC YEAR 2000-2001**

Master of Arts		Master of Social Work	
Psychology	1	Social Work	17
Developmental Psychology	7		
Linguistics	6	Subtotal	17
Interpreting	7		
Mental Health Counseling	7		
School Counseling & Guidance	12	Specialist	
Community Counseling	3	Administration & Supervision	0
Rehabilitation Counseling	0	Educational Specialist	0
Education		School Psychology	6
Advanced Studies in Education	7		
Family-centered Early Education	3	Subtotal	6
Elementary Education	8		
Multiple Disabilities	3		
Non-degree Teacher Certification	0	Doctor of Philosophy	
Secondary	11	Administration & Supervision	0
Special Education in Deafness	4	Clinical Psychology	7
		Deaf Education	1
Subtotal	79	Special Education Admin	5
		Subtotal	13
Master of Science			
Administration	2		
Audiology	0		
Speech-Language Pathology	8		
Subtotal	10		
TOTAL			125