

Spring Enrollment Report

AY0708



Office of Institutional Research
May, 2008

Table of Contents

Chart	Title	Page
	Student Body Profiles	
1	Percentiles for Freshmen DRP Scores	3
2	Average ACT Score for Entering Freshman	3
	Spring Enrollment	
3	Total Spring Enrollment	5
4	Spring Enrollment by Gender and Degree Program	5
5	Spring Undergraduate Enrollment by Ethnicity	6
6	Spring Graduate Enrollment by Ethnicity	6
	Mid Career Indicators	
7	Sophomores Completing English 102 or Above	8
8	Sophomores Completing Math 101 or Above	8
9	Sophomore GPA	9
	Performance Indicators	
10	Average Class Size by Department	11
11	Spring Student Faculty Ratio by Department	13
12	Gallaudet Consortium Use	14
	Senior Profiles	
13	Degrees Conferred	16
14	Hearing Status of Senior Class	16
15	Gender of Senior Class	17
16	Ethnicity of Senior Class	17
17	Credits Taken in Spring Semester	18
18	Seniors Cumulative GPA	18

Student Body Profiles

Chart 1

Percentiles for DRP Scores For Freshmen

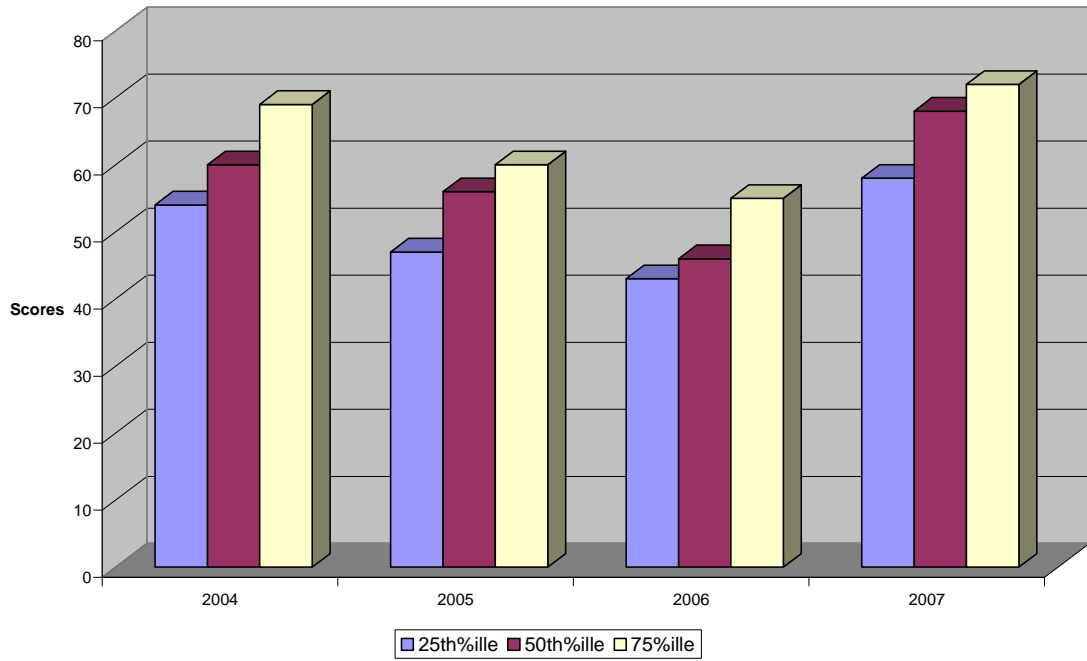
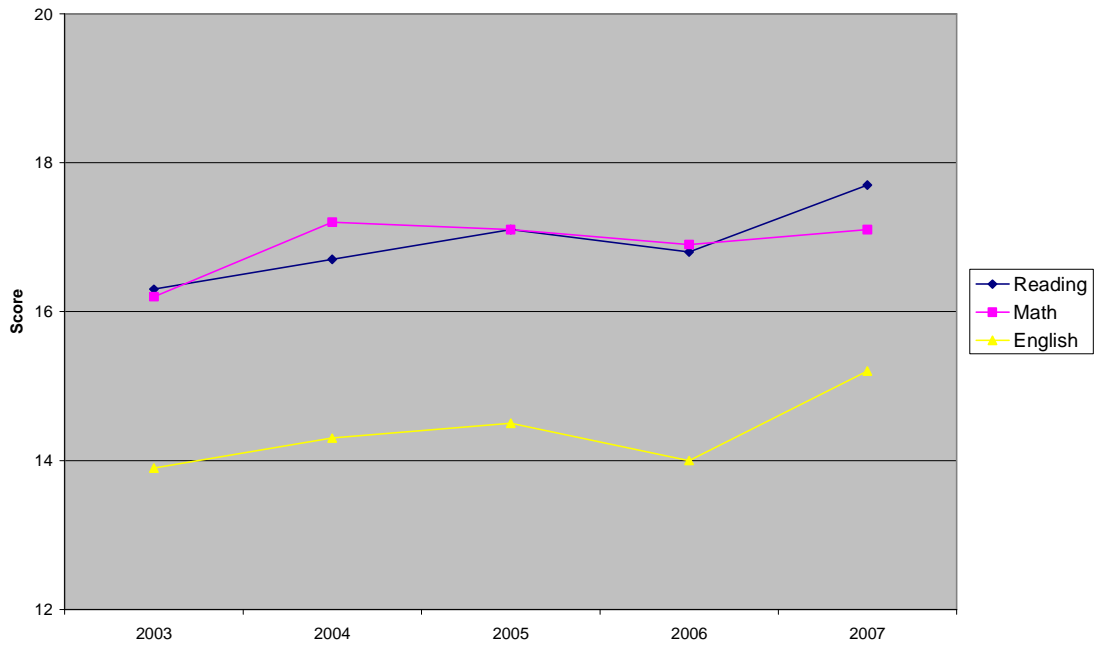


Chart 2

Average ACT Score for Entering Freshmen



Spring Enrollment

Chart 3
Total Spring Enrollment

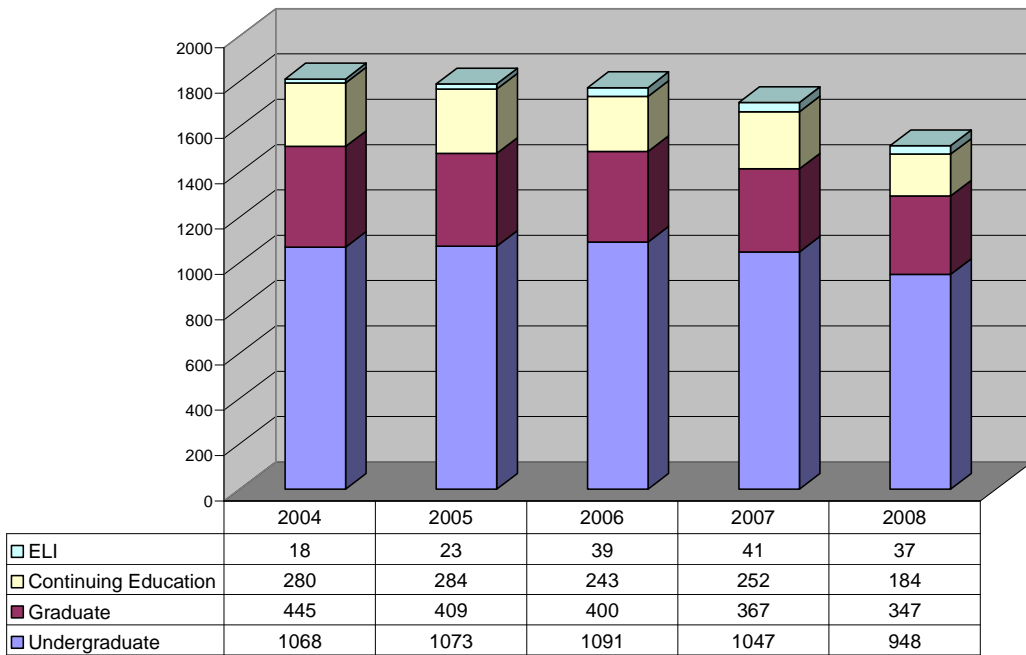


Chart 4
Spring Enrollment by Gender and Degree Program

Percent Female

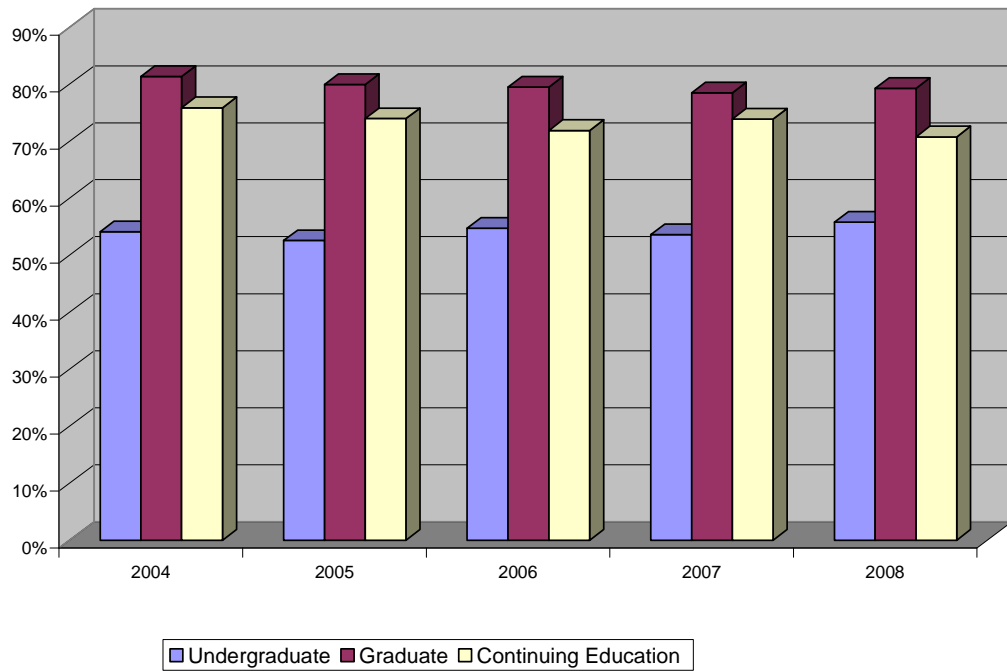
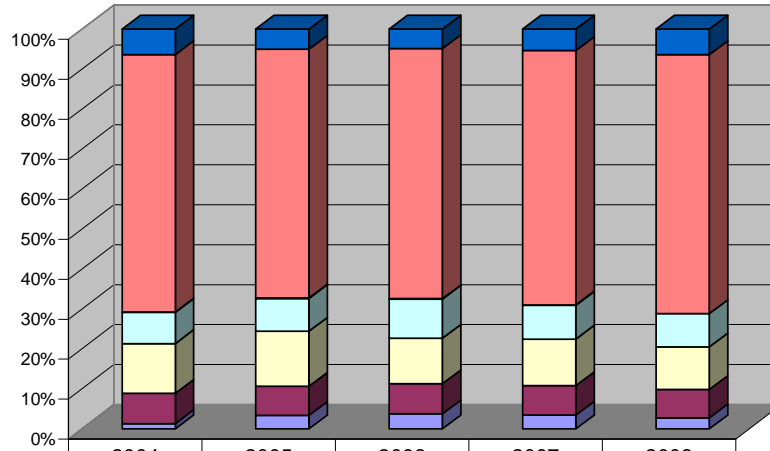


Chart 5

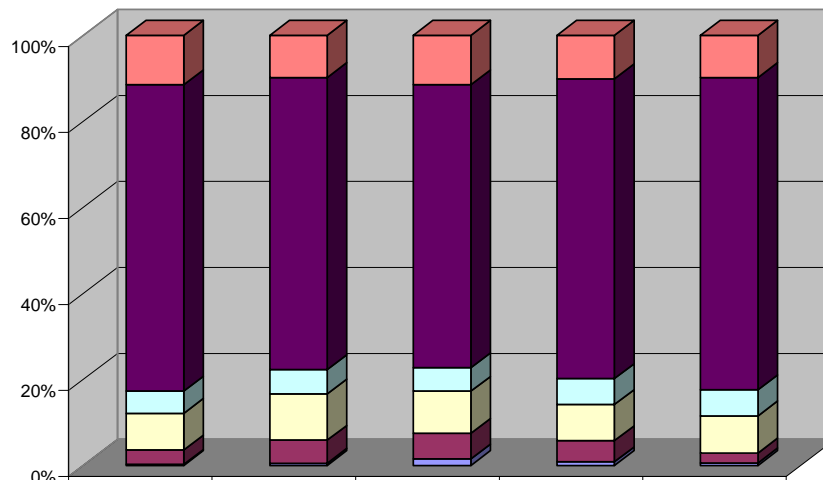
Spring Undergraduate Enrollment By Ethnicity



	2004	2005	2006	2007	2008
Unknown	68	54	53	56	61
White	688	668	683	667	614
Pacific Rim	1	1	1	1	0
Latino	83	88	107	89	79
African American	133	148	124	122	101
Asian	81	78	82	77	67
Native American	14	36	41	36	26

Chart 6

Spring Graduate Enrollment by Ethnicity



	2004	2005	2006	2007	2008
Not Specified	51	40	46	37	34
White	317	278	263	256	252
Latino	23	23	22	22	21
African American	38	44	39	31	30
Asian	15	22	24	18	8
Native American	1	2	6	3	2

Mid Career Indicators

Chart 7

Sophomores Completing English 102 or Above

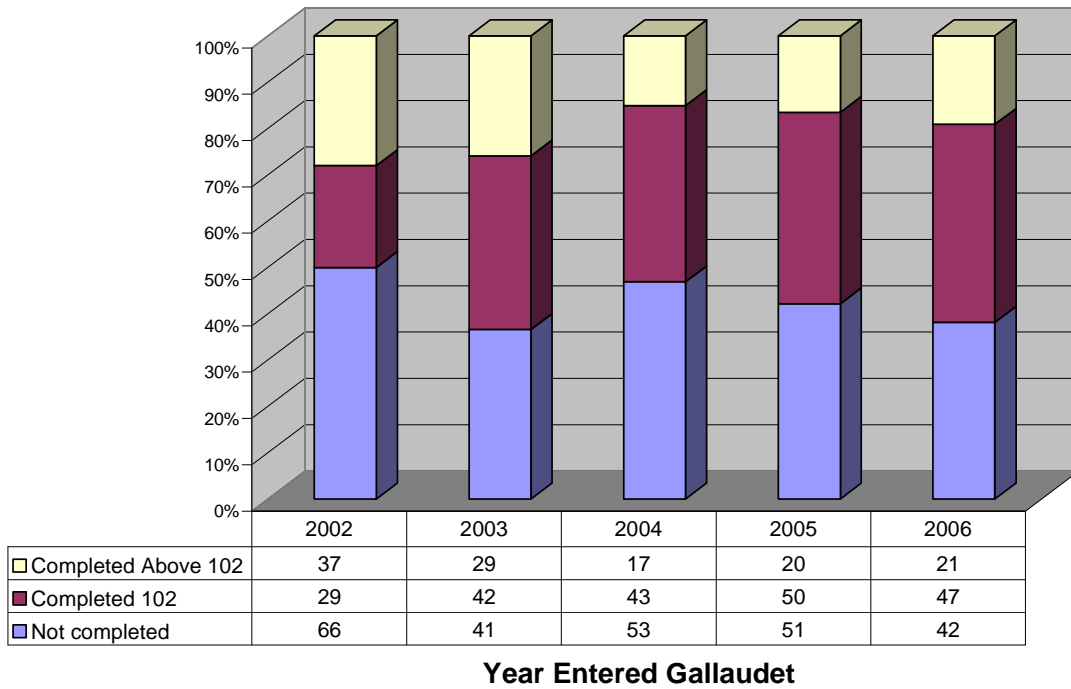


Chart 8

Sophomores Completing Math 101 or Above

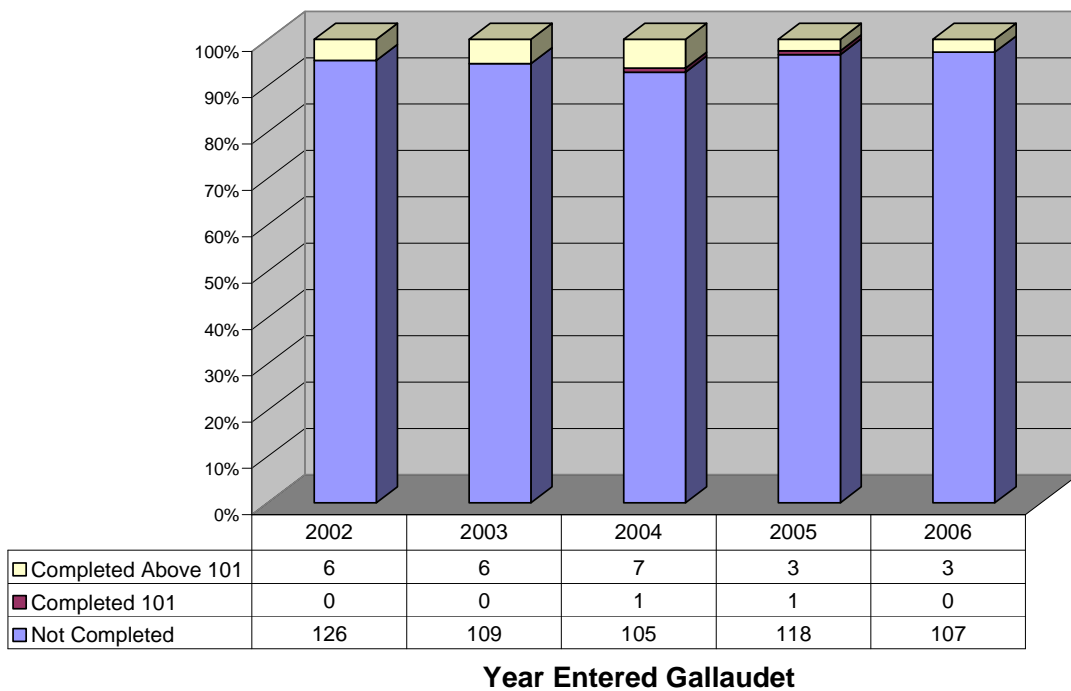
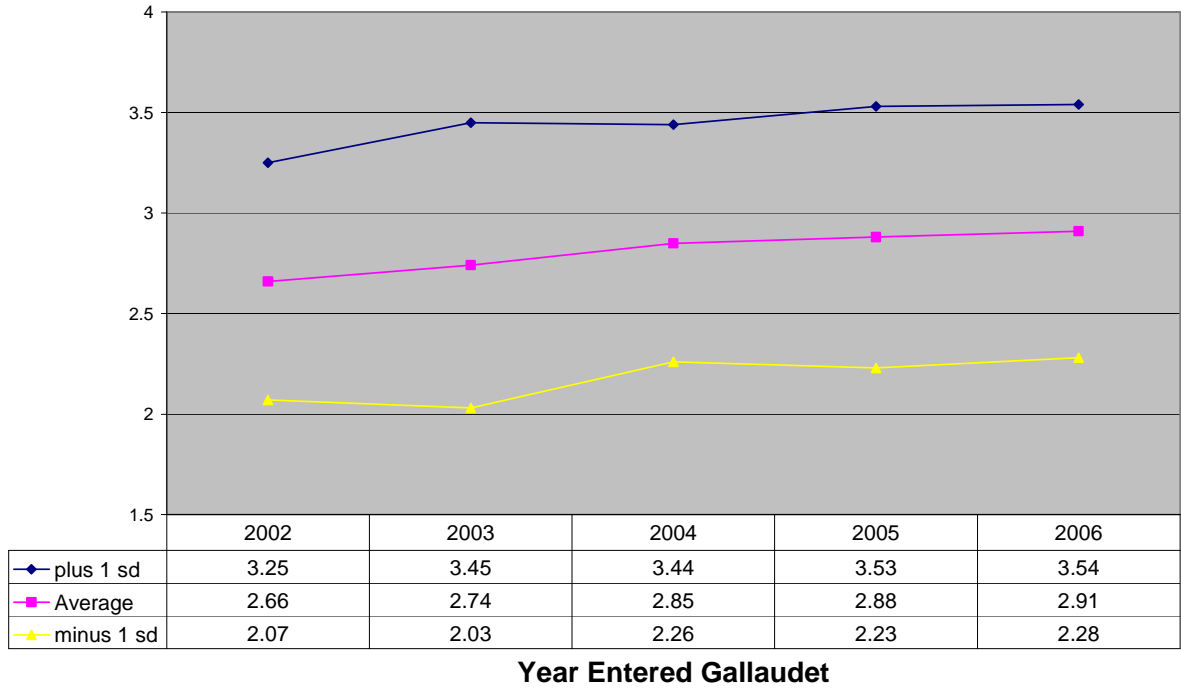


Chart 9

GPA at End of Sophomore Year



Performance Indicators

Table 10
Spring Average Class Size by Department

	2004	2005	2006	2007	2008
Accounting (ACC)	7.3	10.1	7.5	9	9.5
Administration (ADM)	6.5	6.5	3.2	4.7	3.1
American Sign Language (ASL)	7.4	7.5	12.6	6.2	6.6
ASL (Grad)	8	1.4	3.3	4	5
Applied Literacy (ALT)					7.4
Art (ART)	9.6	8.5	8	8.3	9.1
Biology (BIO)	10.5	13.8	16.2	10.8	10.9
BIO (Grad)		5	11	0.5	11
Business Administration (BUS)	14	16.5	17.7	16.5	14.9
Chemistry (CHE)	6.4	7.7	9.8	7.1	5.4
Cntr for Acad Prgm & Stdnt Ser (CAP)	6.5	3.9	3.1	3.9	2.2
Communication Studies (COM)	11.5	13	14.4	11.1	11.5
Computer Information Science (CIS)	8	6.1	6	6.4	7.3
Computer Science (CSC)	6.4	4.9	5.8	3.5	2.8
Counseling (COU)	28.5	28	28.5	26.5	6
COU (Grad)	5.3	8.5	5.9	7.8	5.2
Deaf Studies (DST)	13.9	13.2	12.1	15.2	15.6
DST (Grad)	7.8	10.2	6.9	5	4.8
Economics & Finance (ECO)	8.1	6.7	8.7	7.9	8.9
Edu Foundation & Research (EDF)	18	9	19	18	18
EDF (Grad)	10.4	7.5	7.6	7.3	8
Education (EDU)	9.9	8.1	8.5	10.7	9.9
EDU (Grad)	6.4	4.8	4.7	5.8	4.1
English (ENG)	11.4	11.6	11.6	11.5	11.5
Family and Child Studies (FCS)	11.9	10.4	13.4	6.1	9.8
Foreign Lang, Lit & Culture (FLC)	5.5	3.4	7.6	4.2	11.7
French (FRE)	10.1	8.9	10.6	8.6	9.6
General Studies					12.5
German (GER)	8	5.3	14	10	8.8
Government (GOV)	10.9	10.9	10.7	9.5	8.2
Hearing, Speech & Language Sci (HSL)	10.3	8.8	11	11	0
HSLS (Grad)	9.7	7.8	6.3	7.8	5.6
History (HIS)	13.7	15.9	15.4	13.8	11.6
HIS (Grad)	9.5	13	8.3	5	2
Honors Program (HON)	5.5	13.4	5	2.5	2.5
Interpretation (INT)			8	6.3	4.1
INT (Grad)	6.7	7.4	3.8	4.2	8.5
Italian (ITA)		11	9	11	0
Latin (LAT)	9	4.5	4	14	5
Linguistics (LIN)	6.4	12.7	12.3	12.6	16
LIN (Grad)	6.2	5.5	2.9	3.1	1.9
Mathematics (MAT)	13.5	15.1	13.3	14	10.2
Philosophy (PHI)	8	13.9	9.3	9.9	8.7
Physical Education (PED)	10.3	10.6	13.5	12.1	10.2
Physics (PHY)	8.9	8.3	10.3	11.9	13
Psychology (PSY)	9.1	12	15	16.3	16.6
PSY (Grad)	4.2	4.8	4	4.9	4.3
Recreation (REC)	5.4	7.5	4.7	4.8	7.4
REC (Grad)	3	2.8	1	3	0.3

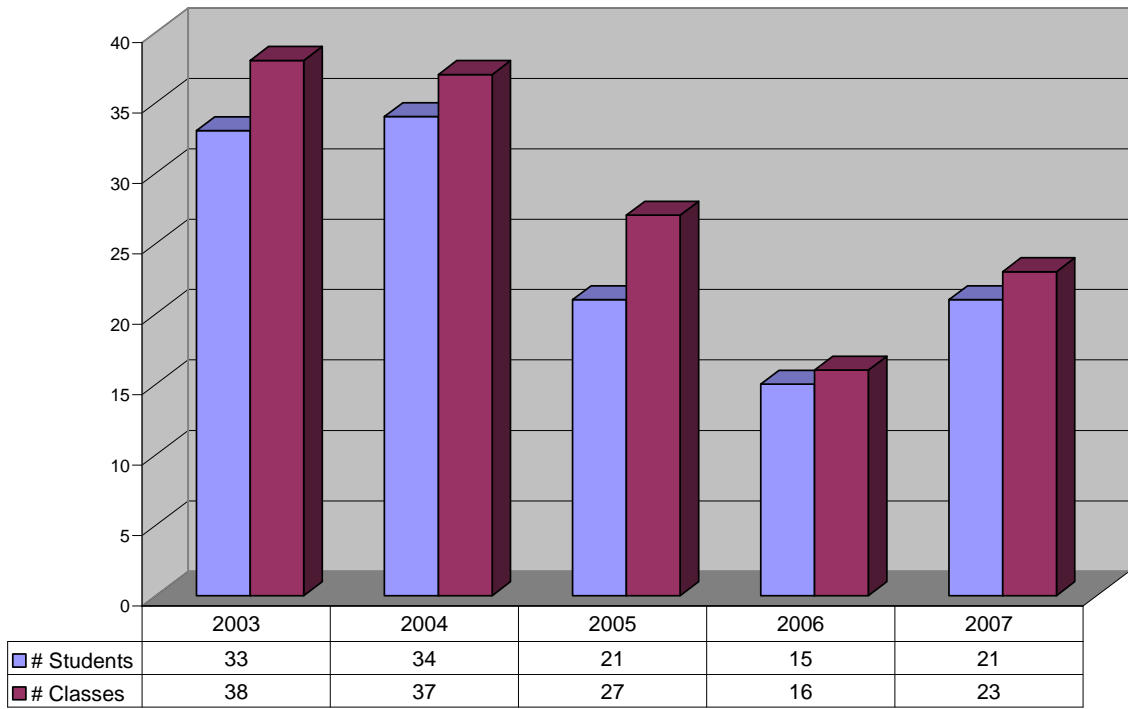
Religion (REL)	13.3	14	19	18	8
Social Work (SWK)	12.7	8.8	9.9	12.8	11.3
SWK (Grad)	8.3	6.7	8.1	8.1	11.3
Sociology (SOC)	13.6	16.7	15.9	17.2	10.6
Spanish (SPA)	10.1	9	11.1	8.8	10.1
Theatre Arts (THE)	7.3	10.1	9.5	8	9.8
Women's Studies (WMS)				1	1
Undergraduate Average	10.1	10.7	11.4	10.4	9.9
Graduate Average	6.3	5.8	4.8	5.6	4.8

Table 11
Spring Student Faculty Ratio by Department

	2004	2005	2006	2007	2008
Accounting (ACC)	16.3	19	16.5	21.3	16.5
Administration (ADM)	12	8.6	7.6	5.3	5
American Sign Language (ASL)	17.6	6.4	8.6	7.2	6.8
Applied Literacy (ALT)				14.5	9.5
Art (ART)	20.4	19.7	23.6	23.6	24.7
Biology (BIO)	21.3	20.1	25.1	16	14.8
Business Administration (BUS)	12.6	17.4	19.4	20.3	17.3
Chemistry (CHE)	9	10	10.6	7.6	6.8
Cntr for Acad Prgm & Stdnt Ser (CAP)	6.9	4.6	4.3	6.9	4.1
Communication Studies (COM)	16.7	21.1	22	22.7	22.6
Computer Information Science (CIS)	13.5	12	10.8	14	12.3
Computer Science (CSC)	8	7.5	10.3	6.3	2.8
Counseling (COU)	11.6	15.3	9.9	11.3	4.5
Deaf Studies (DST)	20.9	22	16.8	16.8	13.3
Economics & Finance (ECO)	18.7	15	21.7	19.3	24.7
Edu Foundation & Research (EDF)	16.4	15.2	13.3	15.8	15.5
Education (EDU)	9.7	7.8	8	8.3	7.8
English (ENG)	23.4	26.5	24.7	24.1	21.7
English Language Institute (ELI)	4.3	5.6	4.3	4.6	4.6
Family and Child Studies (FCS)	22.7	18	25.5	18	20.3
Foreign Lang, Lit & Culture (FLC)	10.5	4.7	7.8	6	14.3
French (FRE)	15.2	11.5	15	18.3	9.3
General Studies requirements (GSR)					9.6
German (GER)	8.5	8	16	8	9
Government (GOV)	33.7	30.5	24.4	21	27.7
Hearing, Speech, & Languages (A&S)	11.7	7.1	5.2	4.4	3.3
History (HIS)	29.8	37.7	31.4	25.1	21.9
Honors Program (HON)	8	10.5	7.5	6	6
Interpretation (ITP)	3.2	3.2	3.4	3.2	4.5
Italian		11	11	11	0
Latin (LAT)	10	10	2	14	9
Linguistics (LIN)	10	9.1	11	12.4	12.4
Mathematics (MAT)	30.8	31.8	33.8	32.2	23.2
Philosophy (PHI)	30	26	29.3	27	20
Physical Education (PED)	28	30.1	30.8	28.8	23
Physics (PHY)	17.5	14	11.3	16.3	18
Professnl Studies and Training (PST)	11.5	13.2	10.6	11	13
Psychology (PSY)	11.2	13.1	14	13	12
Recreation (REC)	7.3	7.8	6.8	4.4	5.3
Religion (REL)	41	21	42	19	18
Social Work (SWK)	7.8	6.8	8.1	7.3	8.1
Sociology (SOC)	20.3	35	30.3	31	29
Spanish (SPA)	16.6	15.7	16.6	14.5	16.7
Theatre Arts (THE)	21.7	20.5	22.6	16	24
Women's Studies (WMS)		12		1	1

Chart 12

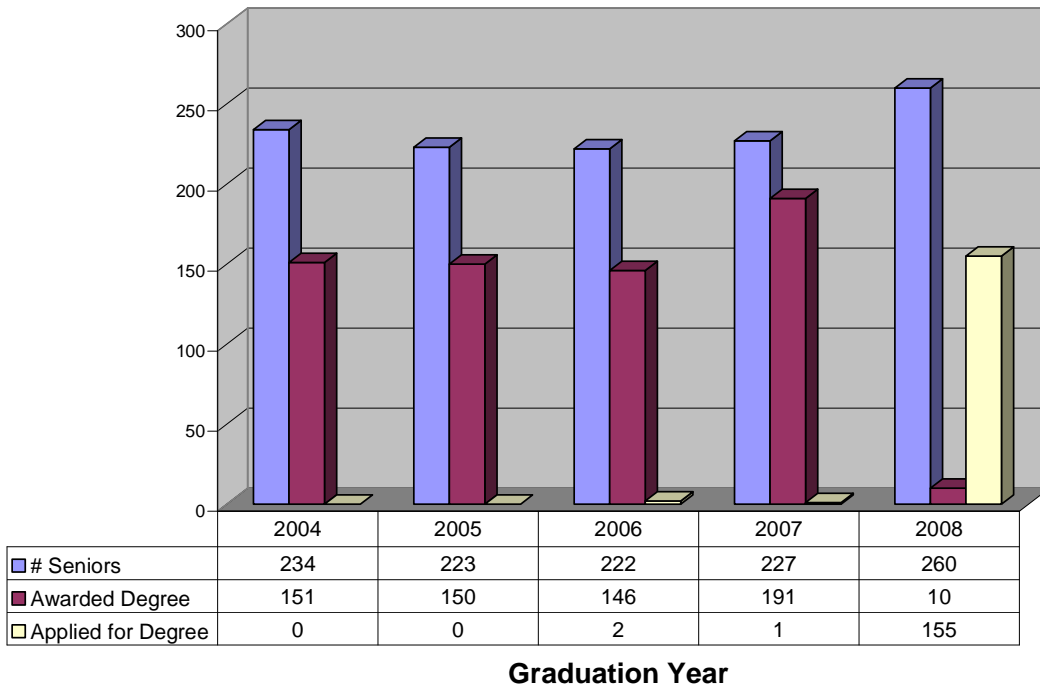
Gallaudet Consortium Use



Senior Profiles

Chart 13

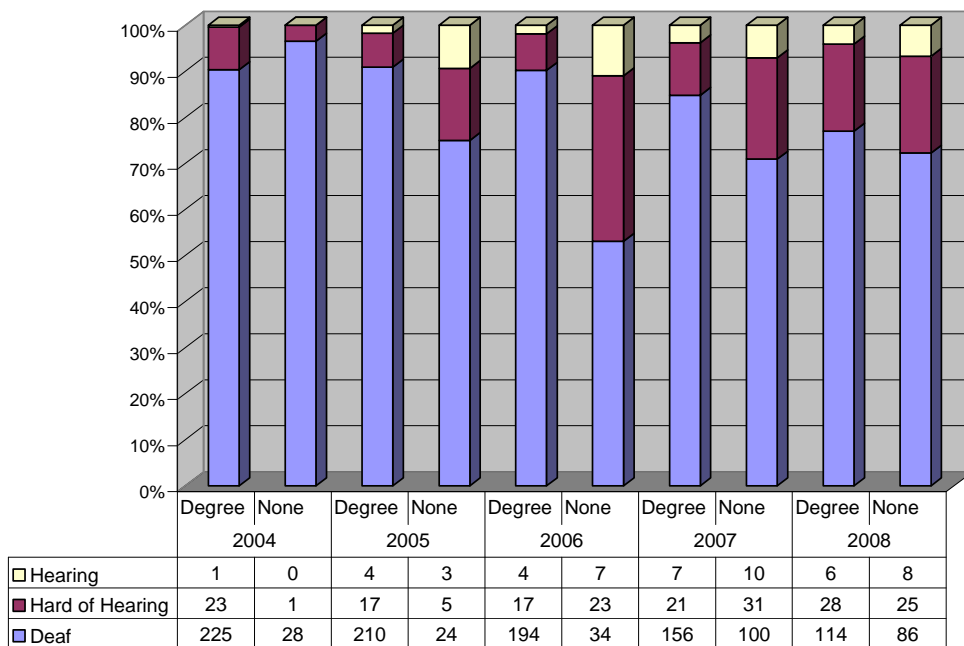
Seniors Completing Degrees



Graduation Year

Chart 14

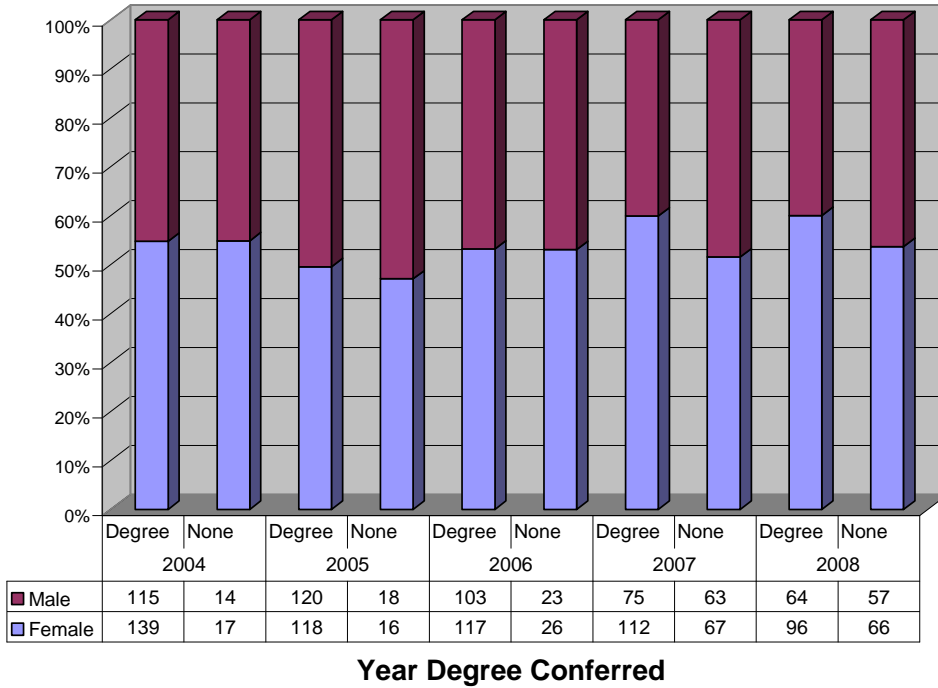
Hearing Status of Senior Class



Year Degree Conferred

Chart 15

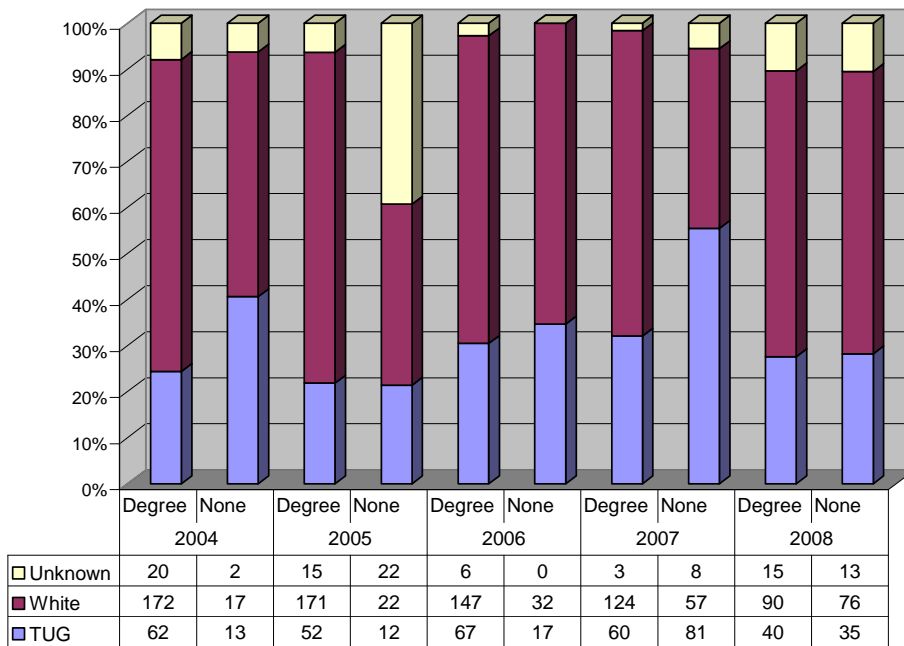
Gender of Senior Class



Year Degree Conferred

Chart16

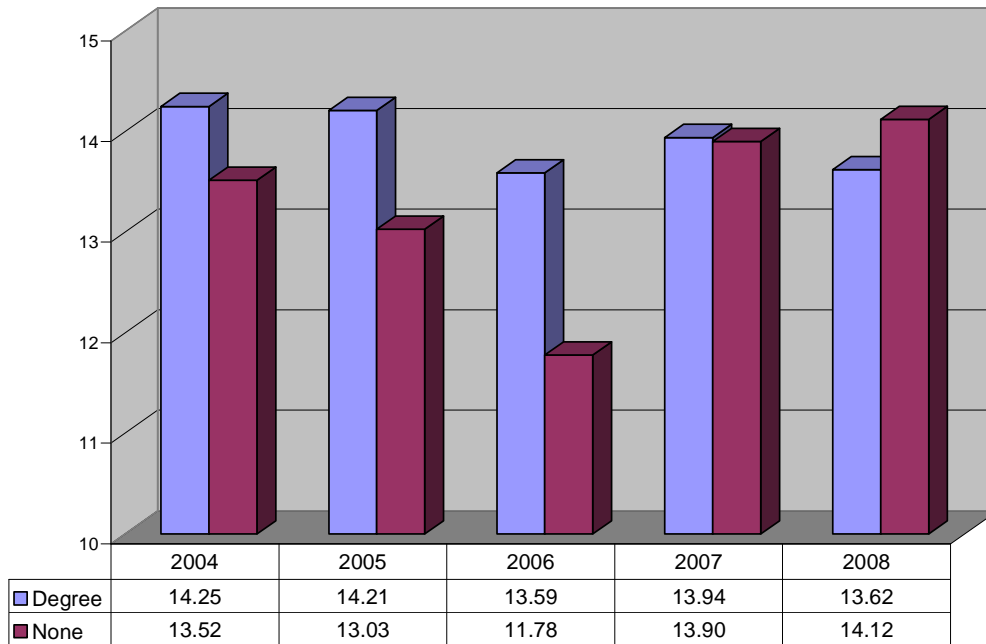
Ethnicity of Senior Class



Year Degree Conferred

Chart 17

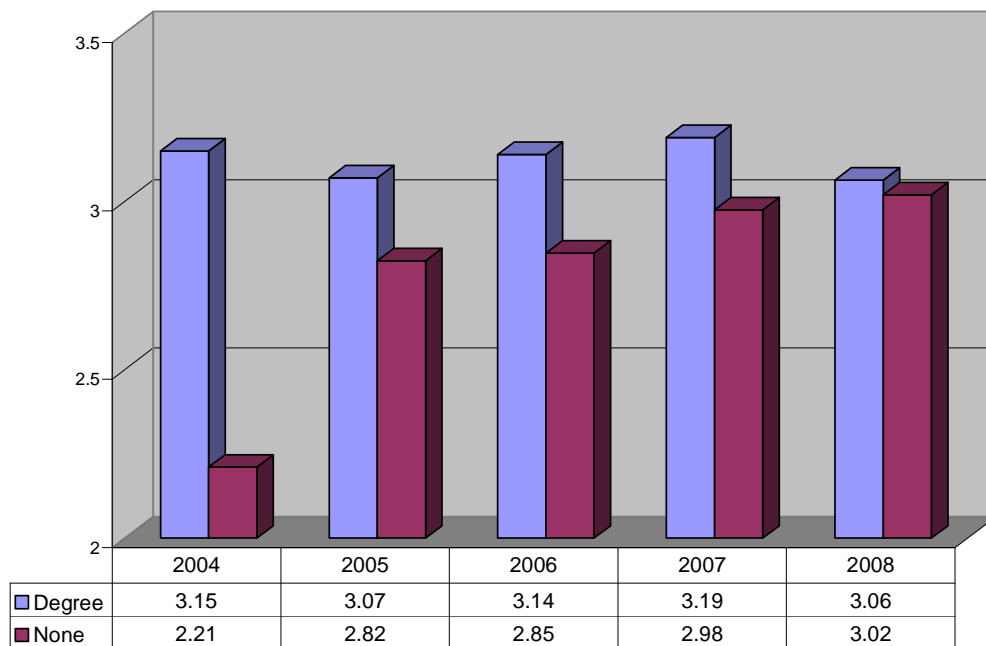
Credits Taken in Spring Senior Semester



Year Degree Conferred

Chart 18

Seniors' Cumulative GPA



Year Degree Conferred