

2004 Enrollment Report

Gallaudet  **University**

This page left blank intentionally.

2004 Enrollment Report Table of Contents

		Page
Introduction		
	Table of Contents	iii
	Introduction	v
	New Features for the 2004 Edition	vi
	Executive Summary	vii
Total University Enrollment Information, Fall 2004		
Table 1	Total University Enrollment by Gender and Academic Load, Fall 2004	3
Figure 1	10-Year History of Total University Enrollment, Fall 1995 to Fall 2004	4
Table 2	10-Year History of Total University Enrollment, Fall 1995 to Fall 2004	5
Table 3	Total University Enrollment by Demographics, Fall 2004	6
Table 4	10-Year History of Undergraduate and Graduate Enrollment by Demographics, Fall 1995 to Fall 2004	7
Academic Year 2003-04 Information		
Table 5	Total University Enrollment, AY 2003-04	11
Figure 2	5-Year History of Total University Unduplicated Headcount, AY 1999-00 to AY 2003-04	11
Table 6	Undergraduate and Graduate Enrollment, Demographic Profile, AY 2003-04	12
Table 7	Graduate Degree Program Enrollment by Discipline, AY 2003-04	13
Degree-seeking Students, Fall 2004		
Table 8	Degree-seeking Students "Snapshot" Profile, Fall 2004	17
Table 9	10-Year History of Degree-seeking Enrollment as Percentage of Total Enrollment, Fall 1995 to Fall 2004	18
Figure 3	10-Year History of Degree-seeking Student Fall Enrollment, Fall 1995 to Fall 2004	18
Figure 4a	5-Year History of Percentage of Students Living On-Campus, Fall 2000 to Fall 2004	19
Figure 4b	Dormitory Occupants by Student Category, Fall 2004	19
Table 10	Degree-seeking U.S. Students by State of Origin, Fall 2004	20
Table 11	Degree-seeking International Students by Country of Origin, Fall 2004	21
Table 12	Undergraduate Declared Majors and Minors by Discipline, Fall 2004	22
Table 13	Graduate Degree Program Enrollment by Discipline, Fall 2004	23
Non-degree Seeking Students, Fall 2004		
Table 14	Non-degree Seeking Students "Snapshot" Profile, Fall 2004	27
Table 15	10-Year History of Non-degree Seeking Enrollment as Percentage of Total Enrollment, Fall 1995 to Fall 2004	28
Figure 5	10-Year History of Non-degree Student Fall Enrollment, Fall 1995 to Fall 2004	28
Table 16	Non-degree Seeking Students by State or Country of Origin, Fall 2004	29

Admissions, Fall 2004

Table 17	Undergraduate and Graduate Applications, Admissions, and Enrollments, Fall 2004	33
Figures 6a & 6b	Undergraduate and Graduate Fall Application, Admission, and Enrollment History, Fall 2000 to Fall 2004	33
Table 18	Demographics of New Degree-seeking Undergraduate Students, Fall 2004	34
Figures 7a & 7b	English/Math Placement Test Results, Fall 2004	35
Figures 7c & 7d	Percentage of New Undergraduates who Tested into Freshman English/Math or Higher, 2000 to 2004	35
Table 19	Demographics of New Degree-seeking Graduate Students, Fall 2004	36

Persistence, Attrition, and Graduation, Fall 2004

Table 20	Undergraduate One-Year Graduation, Attrition, and Persistence, Fall 2003 to Fall 2004	39
Table 21	Undergraduate Semester-to-Semester Graduation, Attrition, and Persistence, Fall 2003 to Spring 2004 and Spring 2004 to Fall 2004	40
Table 22	10-Year History of Undergraduate One-Year Attrition by Demographics, AY 1994-95 to 2003-04	41
Figure 8	10-Year History of Undergraduate One-Year Attrition, AY 1994-95 to AY 2003-04	41
Table 23	Long-term Retention Rates by 6-Year Cohort, Fall 1998 to Fall 2003	42
Table 24	10-Year History of Degrees Awarded by Type of Degree, AY 1994-95 to AY 2003-04	43
Table 25	Degrees Awarded by Demographics of Degree Recipients, AY 2003-04	43
Table 26	Undergraduate Degrees Awarded by Discipline, AY 2003-04	44
Table 27	Graduate Degrees Awarded by Discipline, AY 2003-04	45

Glossary	A1
----------	----

Introduction

The Office of Planning is pleased to present the 2004 Enrollment Report, which includes several revisions and additions of information based on feedback received from the community. It is our hope that these changes will help users find information more quickly and in formats which are more user-friendly.

If you have any suggestions or comments for further improvements to the Enrollment Report, please contact the Office of Planning.

Gallaudet University Office of Planning
College Hall, Room 203
Phone: (202) 651-5030 v/tty
Fax: (202) 651-5508
Email: planning@gallaudet.edu

Acknowledgments

The Office of Planning gratefully acknowledges the cooperation and assistance of the following individuals and departments in the development of this report:

The Office of the President
The Office of the Provost
Dean, College of Liberal Arts, Sciences, and Technology
Dean, Graduate School and Professional Programs
Dean, Student Affairs

Academic Affairs Planning Committee
Admissions Office
Alumni Relations
Campus Life
Development Office
Gallaudet PeopleSoft User's Group (ISIS)
Graduate Education and Extended Learning
Graduate School Admissions
Information Technology Services, PeopleSoft Unit
Office of Enrollment Services
Public Relations
Registrar's Office

New Features for the 2004 Edition

The report features a new organization of information, dividing tables into the following sections:

- Total University Enrollment Information for Fall 2004
- Academic Year 2003-04 Information
- Degree-seeking Students for Fall 2004
- Non-degree Seeking Students for Fall 2004
- Admissions for Fall 2004
- Persistence, Attrition, and Graduation for Academic Year 2003-04

New tables/reports include:

- **Table 6:** Undergraduate and Graduate Enrollment, Demographic Profile, AY 2003-04
- **Table 7:** Graduate Degree Program Enrollment by Discipline, AY 2003-04
- **Table 8:** Degree-seeking Students "Snapshot" Profile, Fall 2004
- **Table 9:** History of Degree-seeking Enrollment as Percentage of Total Enrollment, Fall 1995 to Fall 2004
- **Figures 4a & 4b:** Dormitory Occupancy Statistics, Fall 2004
- **Table 14:** Non-degree Seeking Students "Snapshot" Profile, Fall 2004
- **Table 15:** History of Non-degree Seeking Enrollment as Percentage of Total Enrollment, Fall 1995 to Fall 2004
- **Table 21:** Undergraduate Semester-to-Semester Graduation, Attrition, and Persistence, Fall 2003 to Spring 2004 and Spring 2004 to Fall 2004

Note in particular **Table 7**, Graduate Degree Program Enrollment by Discipline. This table covers program enrollments for a full academic year, thus reflecting enrollments in those programs which occur primarily in the spring and/or summer terms. Also note **Table 21**, Undergraduate Semester-to-Semester Graduation, Attrition, and Persistence. Previous reports counted only students who registered at the University for two consecutive fall terms; thus, students who were newly admitted in the spring were never reflected in the persistence and attrition calculations. This table aims to address that issue so that spring admissions can be tracked.

This report also features new presentations of material, based on input from frequent users of the Enrollment Report. These new presentations include:

- The combining of graduate and professional studies students into one category, Graduate and Professional Studies (GPS), which mirrors the presentation of data used in the Graduate School Enrollment Report at the October 2004 Board of Trustees meeting
- The separation of information on degree-seeking vs. non-degree seeking students
- The inclusion of FTE calculations in **Tables 1 and 8**
- The tabulation of students from traditionally under-represented groups (TUGs) in **Tables 3, 6, 8, and 14**
- The ranking of the top five states and top three countries of origin for undergraduate and graduate enrollment in **Tables 10 and 11**
- The inclusion of undergraduate declared minors in **Table 12**
- The ranking of the top five undergraduate and graduate degree programs by enrollment in **Tables 12 and 13**
- The number of dual degree candidates accepted to the graduate school in **Table 19**
- The ranking of the top five undergraduate and graduate disciplines by degrees awarded in **Tables 26 and 27**

One table was revised considerably and worth highlighting. **Table 18** contains demographics of new undergraduate students. This year, we have presented information for both first-time freshmen and transfer students. We also include breakdowns of previous institution(s) attended and self-rated sign skills for all new undergraduates. For transfer students, we include their admissions status (as freshmen, sophomores, juniors, etc.).

Executive Summary

All of the Fall 2004 information in this report was derived from data taken from the Gallaudet PeopleSoft student data system on the University Census Date, which was September 15, 2004. Highlights from the findings are listed below.

Total University Enrollment Information (Tables 1 through 4)

- Undergraduate enrollment is almost equally divided between men and women. However, the vast majority of degree-seeking undergraduates are enrolled as full-time students (**Table 1**).
- There are more women than men enrolled in graduate programs. Approximately 30% of all degree-seeking graduate students are enrolled part-time (**Table 1**).
- Professional Studies and Training (PST) students are primarily women (**Table 1**).
- Enrollment has remained fairly consistent since 1998. The primary sources of spikes and drops in enrollment are the graduate non-degree seeking programs (**Table 2**).
- Total University enrollment features 10% international students and 25% students from Traditionally Under-represented Groups (TUGs) (**Table 3**).
- Total University enrollment of students from each individual TUG has risen over the past 10 years. The Fall 2004 class experienced a sharp increase in the number of students who are Native American, jumping from 1% in 2003 to 3% in 2004 (**Table 4**).

Academic Year 2003-04 Information (Tables 5 through 7)

- The Spring 2004 term had higher enrollment than the Fall 2003 term in AY 2003-04. Much of this was due to the sharp increase in PST enrollment (**Table 5**).
- The sharp increase in graduate headcount from AY 2002-03 to AY 2003-04 can be attributed to expanded extension and PST course offerings (**Figure 2**).
- Although most undergraduate degree-seeking students enroll full-time in Fall and Spring, they tend to enroll part-time for the Summer term. The same trend holds true for graduate students. Aside from academic load, the other demographics of degree-seeking students remain constant across each term (**Table 6**).

Degree-seeking Students, Fall 2004 (Tables 8 through 13)

- Degree-seeking enrollment as a percentage of total enrollment at the undergraduate level has remained constant for the past 10 years. The graduate percentage has increased, from 44% in 1995 to 68% in 2004. The overall percentage of degree-seeking students for the combined undergraduate and graduate programs has increased from 79% in 1995 to 85% in 2004 (**Table 9**).
- On-campus residents are primarily undergraduate students. Fewer than 50% of all graduate students choose to live on-campus (**Figure 4b**).
- The top five states of origin for undergraduate enrollment tend to reflect the top states by population in the U.S. However, the top five states of origin for graduate enrollment tend to be more localized to the DC metro area (**Table 10**).
- Most degree-seeking international students are the only individual from their country enrolled at Gallaudet. Only 12 of the 28 countries represented in the undergraduate student body have more than one student from that country. The trend is more pronounced at the graduate level with only two countries sending more than one student (**Table 11**).
- The most popular undergraduate major by enrollment, Social Work, is not among the five most popular undergraduate disciplines by degrees awarded in 2004. Simultaneously, the second most popular degrees awarded in 2004 – Family & Child Studies and Psychology – are not among the five most popular declared majors (**Tables 12 and 26**).
- Of the five most popular graduate majors by enrollment and by degrees awarded, School Counseling & Guidance, Social Work, and Speech-Language Pathology appear on both lists (**Tables 13 and 27**).
- Of the six doctoral-level degree programs offered by the graduate school, three boast the highest program enrollments for Fall 2004: Audiology, Au.D.; Clinical Psychology, Ph.D.; and Special Education Administration, Ph.D. (**Table 13**).

Non-degree Seeking Students, Fall 2004 (Tables 14 through 16)

- Undergraduate non-degree seeking enrollment mirrors the demographics of degree-seeking enrollment except that there is a higher percentage of non-degree seeking international students. This difference can be attributed to the unique enrollment of the ELI program (Table 14).
- Because the majority of Professional Studies & Training (PST) students are hearing, the hearing status profile of graduate non-degree seeking students is dramatically skewed towards hearing students. If we remove the PST students from the profile, we find the percentage of deaf students among the graduate non-degree seeking students is higher than the degree-seeking population (Table 14).
- The percentage of non-degree seeking students in graduate programs has dropped from 56% in 1995 to 32% in 2004. Much of the change can be attributed to new policies in the graduate school that counsel potential graduate special students to become either PST or degree-seeking students. The overall percentage of non-degree seeking students at the University has dropped from 21% in 1995 to 15% in 2004 (Table 15).
- Non-degree seeking students tend to be from the metro DC area, especially those enrolled in PST courses (Table 16).

Admissions, Fall 2004 (Tables 17 through 19)

- Both the undergraduate and graduate programs experienced a drop in applications for the Fall 2001 term. Except for that year, the application, admission, and enrollment trend in the undergraduate program has remained fairly constant; at the graduate level, it has increased (Table 17).
- Transfer students are, on average, six years older than first-time freshmen. More than 50% of transfer students were admitted as freshmen (Table 18).
- The number of students who attended a residential or day school for the deaf vs. those who attended a mainstreamed program is fairly balanced (Table 18).
- The majority of new undergraduate students identified themselves as either good or excellent signers (Table 18).
- There are more deaf/hard of hearing than hearing individuals in the new graduate student class (Table 19).
- Deaf Education, M.A. and Social Work, M.S.W. were the most popular degree programs among new graduate students (Table 19).

Persistence, Attrition, and Graduation, Fall 2004 (Tables 20 through 27)

- Freshmen had a higher academic dismissal and withdrawal rate than any other undergraduate class. Sophomores had the highest persistence rate of all the undergraduate classes (Table 20).
- Six percent of juniors in Fall 2003 graduated early, earning their degrees by Fall 2004 (Table 20).
- Men and women were equally likely to be academically dismissed or to withdraw (Table 20).
- International and Hispanic/Latino students had the highest persistence rate of all the students by racial/ethnic background. Although Asian-American students had the highest academic dismissal rate, they also had the highest graduation rate. Native Americans had the highest withdrawal rate (Table 20).
- All the students from Fall 2003 who were academically dismissed were dismissed within their first semester of study (Tables 20 and 21).
- The one-year attrition rate has remained constant over the past 10 years (Table 22 and Figure 8).
- Transfer students have a higher graduation rate by cohort than first-time freshmen (Table 23).
- The number of doctoral degrees awarded each year has almost doubled since 1995 (Table 24).
- More women than men were awarded degrees – both undergraduate and graduate – in 2004 (Table 25).
- Of the 155 undergraduate degrees awarded, almost 30% were Bachelor of Science degrees (Table 26).

Total University Enrollment Information

Fall 2004

Table 1	Total University Enrollment by Gender and Academic Load, Fall 2004
Figure 1	10-Year History of Total University Enrollment, Fall 1995 to Fall 2004
Table 2	10-Year History of Total University Enrollment, Fall 1995 to Fall 2004
Table 3	Total University Enrollment by Demographics, Fall 2004
Table 4	10-Year History of Undergraduate and Graduate Enrollment by Demographics, Fall 1995 to Fall 2004

This page left blank intentionally.

**Table 1: Total University Enrollment by Gender & Academic Load
Fall 2004**

	Grand Total	Full-Time			Part-Time			
		Total	Men	Women	Total	Men	Women	
UNDERGRADUATES	Degree-seeking							
	1st-Time Freshmen	227	227	106	121	0	0	0
	Other freshmen	259	252	121	131	7	4	3
	Sophomores	219	218	97	121	1	1	0
	Juniors	200	195	93	102	5	3	2
	Seniors	223	201	103	98	22	10	12
	Second Degree	8	5	1	4	3	2	1
	Sub-total	1,136	1,098	521	577	38	20	18
	Non-degree seeking							
	Undergraduate Special	21	0	N/A	N/A	21	10	11
	Exchange	0	0	N/A	N/A	0	0	0
	Consortium	1	0	N/A	N/A	1	0	1
	Visiting	8	0	N/A	N/A	8	0	8
	Undergraduate Extension	0	0	N/A	N/A	0	0	0
	International Interns	5	0	N/A	N/A	5	2	3
	English Language Institute	36	0	N/A	N/A	36	21	15
	Sub-total	71	0	0	0	71	33	38
	UNDERGRADUATE TOTAL	1,207	1,098	521	577	109	53	56
	FTE (FT + 1/3 PT)	1,134	1,098			36		

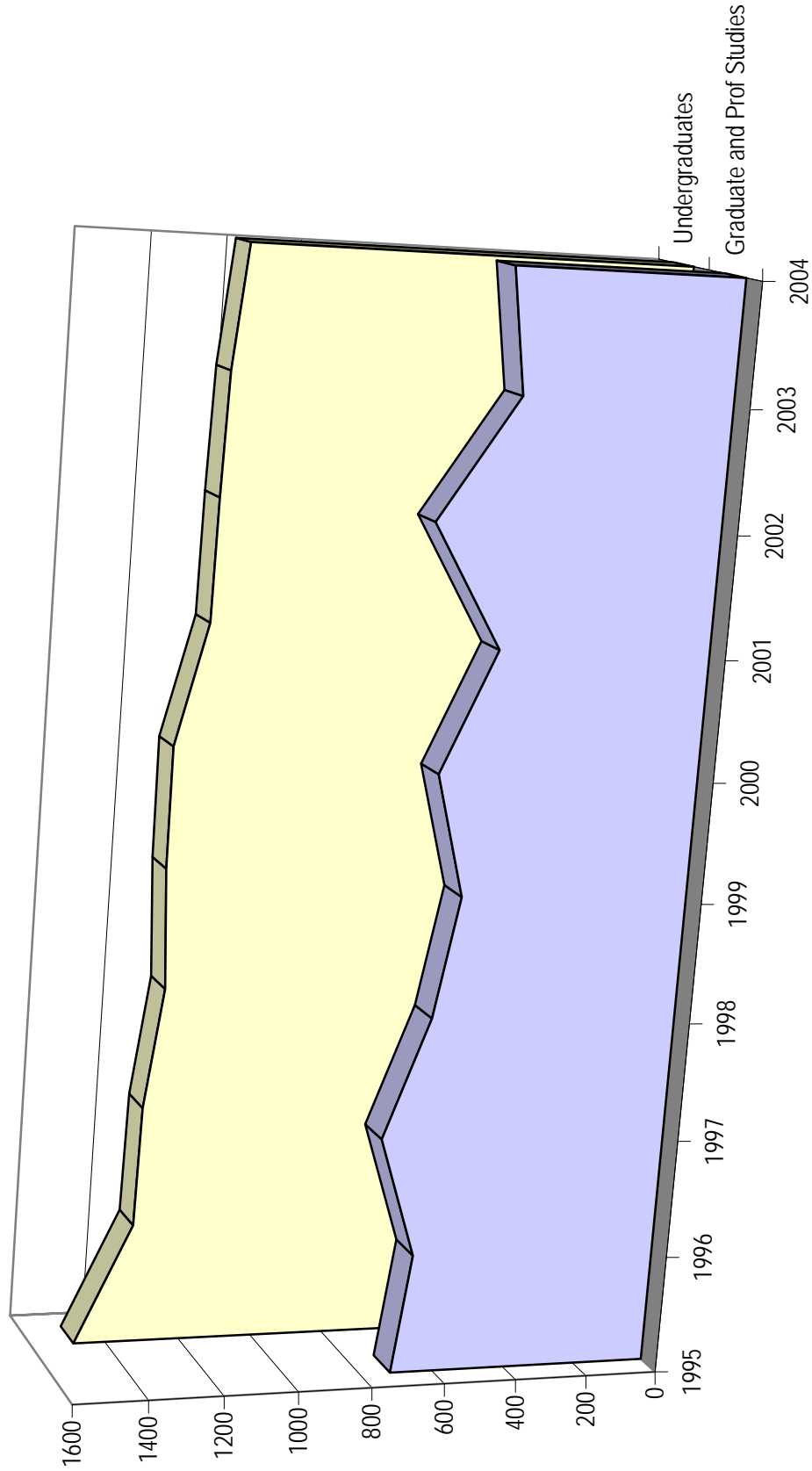
GRADUATE & PROFESSIONAL STUDIES (GPS)	Degree-seeking							
	Certificates*	17	4	0	4	13	0	13
	Masters*	237	204	36	168	33	5	28
	Specialist	34	18	1	17	16	8	8
	Doctorates*	133	73	11	62	60	12	48
	Sub-total	421	299	48	251	122	25	97
	Non-degree seeking							
	Graduate Special	24	0	N/A	N/A	24	10	14
	Consortium	1	0	N/A	N/A	1	0	1
	International Interns	1	0	N/A	N/A	1	0	1
	Prof Studies & Training	176	0	N/A	N/A	176	48	128
	Sub-total	202	0	0	0	202	58	144
	GPS TOTAL	623	299	48	251	324	83	241
FTE (FT + 1/3 PT)	407	299			108			

UNIVERSITY TOTAL	1,830	1,397	569	828	433	136	297
FTE (FT + 1/3 PT)	1,541	1,397			144		

* Does not include dual degree program enrollments

Note: Beginning in Spring 2004, all non-degree students are counted as part-time enrolled.

**Figure 1: 10-Year History of Total University Enrollment
Fall 1995 to Fall 2004**



**Table 2: 10-Year History of Total University Enrollment
Fall 1995 to Fall 2004**

	1995	1996	1997	1998	1999	2000	2001	2002	2003	2004
UNDERGRADUATES										
Degree-seeking										
A.A.S.	8									
Freshmen	583	481	476	501	503	537	451	481	484	486
Sophomores	264	243	260	220	221	210	223	214	216	219
Juniors	274	245	216	240	218	202	212	211	209	200
Seniors	287	284	256	236	248	233	250	241	234	223
Second Degree	12	8	11	20	13	6	11	16	11	8
Non-degree seeking										
Undergraduate Special	48	31	27	36	25	41	36	24	24	21
Exchange	0	1	0	0	0	0	1	1	0	0
Consortium									2	1
Visiting	10	9	5	10	10	6	13	9	5	8
Undergraduate Extension		42	88	32	74	63	21	15	23	0
International Interns				5	6	0	6	8	8	5
English Language Institute						23	21	23	20	36
Undergraduate Sub-total	1,486	1,344	1,339	1,300	1,318	1,321	1,245	1,243	1,236	1,207
GRADUATE & PROF STUDIES (GPS)										
Degree-seeking										
Certificate [†]		1	0	1	0	10	9	60	21	17
Masters [†]	243	261	280	302	285	253	233	249	237	237
Specialists	1	0	1	0	2	2	0	1	20	34
Doctorates [†]	71	71	79	81	95	103	113	114	127	133
Non-degree seeking										
Graduate Special*	68	54	72	40	35	63	35	62	101	25
Graduate Extension	205	178	268	185	124	194	88	115	†	†
International Interns				2	0	0	0	1	†	1
Prof Studies & Training	128	114	92	70	86	93	103	179	70	176
GPS Sub-total	716	679	792	681	627	718	581	781	576	623
TOTAL	2,202	2,023	2,131	1,981	1,945	2,039	1,826	2,024	1,812	1,830

* The Graduate Special count includes Consortium students.

† Does not include dual degree program enrollments

‡ In 2003, Graduate Extension students and International Interns were included with the Graduate Special count. Beginning in 2004, counting rules for Graduate Extension students were changed so they are now included with Graduate Special students.

**Table 3: Total University Enrollment by Demographics
Fall 2004**

	Deaf			Hearing			Unknown			Traditionally Under-represented Groups						Refused/ Unknown				
	International	African American	Asian American	Native American	Hispanic/Latino	Caucasian	International	African American	Asian American	Native American	Hispanic/Latino	Caucasian	International	African American	Asian American		Native American	Hispanic/Latino	Caucasian	
UNDERGRADUATES																				
Degree-seeking																				
Freshmen	45	71	27	25	40	271	7													
Sophomores	23	26	10	10	20	125	5													
Juniors	32	22	9	5	10	118	4													
Seniors	24	19	8	3	11	152	6													
Second Degree	1	0	0	1	0	6	0													
Non-degree seeking																				
Undergraduate Special*	5	2	1	0	0	24	3													
English Language Institute	31	0	1	0	1	0	3													
Undergraduate Total	161	140	56	44	82	696	28													
Undergraduate by %'s	13%	12%	5%	4%	7%	58%	2%	27%												2%
GRAD & PROF STUDIES (GPS)																				
Degree-seeking																				
Certificate	0	1	0	0	0	11	5													
Masters	15	21	5	2	16	166	12													
Specialists	2	3	0	0	0	29	0													
Doctorates	4	17	8	0	8	85	11													
Non-degree seeking																				
Graduate Special*	4	2	0	0	2	17	1													
Prof Studies & Training	4	40	4	0	9	88	31													
GPS Total	29	84	17	2	35	396	60													
GPS by %'s	5%	13%	3%	0.3%	6%	64%	10%	22%												10%
TOTAL	190	224	73	46	117	1,092	88	25%												5%
TOTAL BY PERCENTAGE	10%	12%	4%	3%	6%	60%	5%	25%												5%

* The Undergraduate Special and Graduate Special counts include Consortium students, Visiting Students, and International Interns.

**Table 4: 10-year History of Undergraduate and Graduate Enrollment Demographics
Fall 1995 to Fall 2004**

	1995	1996	1997	1998	1999	2000	2001	2002	2003	2004
UNDERGRADUATES										
International	13%	13%	12%	13%	12%	13%	13%	12%	12%	13%
African-American	10%	10%	11%	11%	10%	10%	11%	11%	11%	12%
Asian-American	4%	4%	4%	4%	4%	5%	5%	5%	5%	5%
Native-American	1%	1%	1%	1%	1%	1%	1%	1%	2%	4%
Hispanic/Latino	5%	5%	6%	7%	6%	6%	7%	7%	7%	7%
Caucasian	65%	63%	62%	61%	63%	60%	59%	60%	60%	58%
Refused/Unknown	3%	3%	4%	4%	5%	6%	4%	4%	3%	2%
GRADUATES										
International	8%	9%	6%	5%	4%	4%	7%	4%	5%	5%
African-American	8%	8%	9%	8%	8%	8%	11%	11%	8%	13%
Asian-American	1%	2%	2%	2%	2%	2%	3%	2%	3%	3%
Native-American	0%	0%	0%	1%	0%	0%	0%	0%	0%	0%
Hispanic/Latino	3%	4%	4%	4%	4%	3%	3%	4%	5%	6%
Caucasian	72%	68%	69%	75%	78%	72%	67%	64%	68%	64%
Refused/Unknown	8%	10%	11%	5%	4%	10%	8%	15%	12%	10%
TOTAL ENROLLMENT										
International	12%	12%	11%	11%	10%	10%	12%	10%	10%	10%
African-American	9%	10%	10%	10%	9%	10%	11%	11%	10%	12%
Asian-American	3%	4%	4%	4%	3%	4%	4%	4%	4%	4%
Native-American	1%	1%	1%	1%	1%	1%	1%	1%	1%	3%
Hispanic/Latino	5%	5%	5%	6%	6%	6%	6%	6%	6%	6%
Caucasian	66%	64%	64%	65%	67%	62%	61%	61%	62%	60%
Refused/Unknown	4%	5%	6%	4%	4%	7%	5%	7%	6%	5%

Percentages in this table are of the total student body; international and US students are not separated.

Note: Because of rounding, percentages may not total 100.

This page left blank intentionally.

Academic Year 2003-2004 Information

Table 5	Total University Enrollment, AY 2003-04
Figure 2	5-Year History of Total University Unduplicated Headcount, AY 1999-00 to AY 2003-04
Table 6	Undergraduate and Graduate Enrollment, Demographic Profile, AY 2003-04
Table 7	Graduate Degree Program Enrollment by Discipline, AY 2003-04

This page left blank intentionally.

**Table 5: Total University Enrollment
AY 2003-04**

		Fall 2003	Spring 2004	Summer 2004
UNDERGRADUATES	Degree-seeking			
	Freshmen	484	349	19
	Sophomores	216	207	32
	Juniors	209	207	47
	Seniors	234	291	65
	Second Degrees	11	9	0
	Non-degree seeking			
	Undergraduate Special	57*	26	48
	Visiting	5	5	2
	English Language Institute	20	24	9
	Undergraduate Total	1,236	1,118	222
GRAD & PROF STUDIES (GPS)	Degree-seeking			
	Certificates	21	16	9
	Masters	237	250	81
	Specialists	20	17	10
	Doctorates	127	122	42
	Non-degree seeking			
	Graduate Special	101	27	25
	Professional Studies & Training	70	323	384
	GPS Total	576	755	551
TOTAL	1,812	1,873	773	

* The Fall 2003 Non-degree undergraduate student count includes extension students.
This table includes dual degree enrollments.

**Figure 2: 5-Year History of Total University Unduplicated Headcount
AY 1999-00 to AY 2003-04**

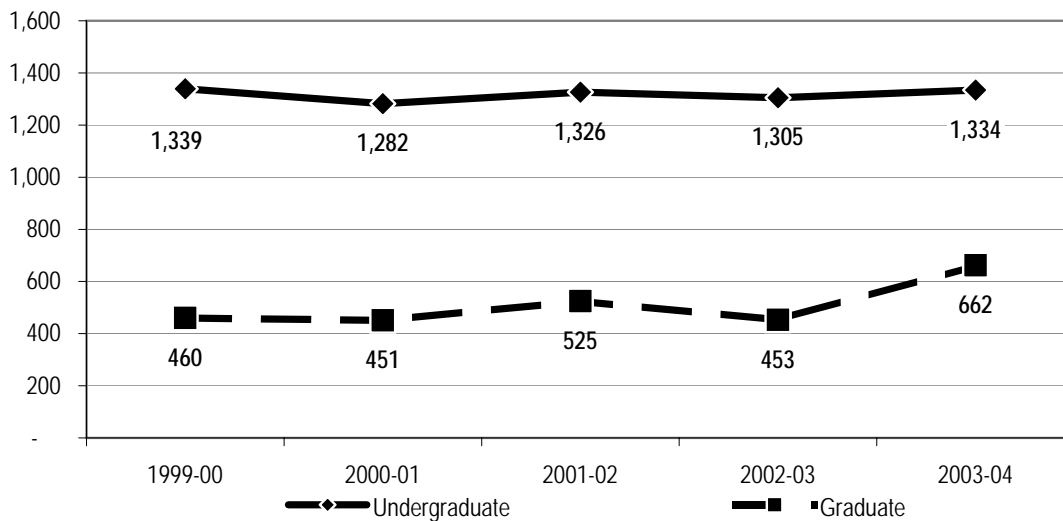


Figure 2 does not include the headcount for Professional Studies & Training students.

**Table 6: Undergraduate & Graduate Enrollment, Demographic Profile
AY 2003-04**

	Male	Female	Full-Time	Part-Time	Deaf	Hearing	Unknown	Int'l	TUG*	Caucasian	Unknown
Degree-seeking Undergraduates											
Fall 2003 (N=1,154)	47%	53%	97%	3%	97%	1%	2%	11%	25%	61%	3%
Spring 2004 (N=1,063)	46%	54%	95%	5%	96%	1%	3%	11%	25%	62%	2%
Summer 2004 (N=163)	39%	61%	22%	78%	96%	1%	2%	18%	22%	60%	1%
Non-degree Undergraduates											
Fall 2003 (N=59) [†]	50%	50%	55%	45%	76%	14%	10%	44%	7%	37%	12%
Spring 2004 (N=55)	45%	53%	N/A	N/A	38%	15%	47%	38%	9%	33%	20%
Summer 2004 (N=59)	44%	56%	N/A	N/A	69%	15%	15%	17%	25%	44%	14%
Degree-seeking Graduates											
Fall 2003 (N=405)	19%	81%	77%	23%	36%	62%	2%	5%	18%	69%	9%
Spring 2004 (N=373)	18%	82%	76%	24%	38%	60%	2%	4%	18%	70%	8%
Summer 2004 (N=133)	14%	86%	20%	80%	35%	63%	2%	2%	20%	72%	5%
Non-degree Graduates[‡]											
Fall 2003 (N=101)	19%	81%	0%	100%	39%	32%	30%	4%	9%	61%	26%
Spring 2004 (N=27)	11%	89%	N/A	N/A	48%	41%	11%	7%	11%	74%	7%
Summer 2004 (N=25)	17%	83%	N/A	N/A	28%	36%	36%	12%	4%	40%	44%

* TUG = Traditionally Under-represented Groups; includes students who self-identify as African-American, Asian-American, Native American, or Hispanic/Latino.

† The Fall 2003 Non-degree undergraduate count does not include extension students; demographic information was not available on them.

‡ Non-degree Graduates do not include Professional Studies & Training students; demographic information was not available on them.

Note: Beginning with the Spring 2004 semester, all non-degree students are counted as part-time students.

**Table 7: Graduate Degree Program Enrollment by Discipline
AY 2003-04**

Degree Program	Term		Sum 04
	Fall 03	Spr 04	
Administration & Supervision			
Special Education Admin., Ph.D.	27	31	10
Instructional Supervision, Ed.S.	0	0	3
Administration, M.S.	12	16	10
Leadership, Certificate	3	2	2
Management, Certificate	3	0	2
American Sign Language & Deaf Studies			
Deaf Studies, M.A.	21	21	7
Counseling			
Mental Health Counseling, M.A.	24	23	9
Community Counseling, M.A.	0	0	0
School Counseling & Guidance, M.A.	27	21	8
Education			
Deaf Education, Ph.D.	13	14	0
Deaf Education, Ed.S.	0	0	0
Deaf Education: Advanced Studies, M.A.	4	2	0
Deaf Education: Elementary, M.A.	12	18	5
Deaf Education: Family-Centered/ Early Education, M.A.	15	15	8
Deaf Education: Multiple Disabilities, M.A.	17	16	4
Deaf Education: Secondary, M.A.	4	4	2
Deaf Education: Special Programs, M.A.	5	7	2
Educational Foundations & Research			
Integrating Technology in the Classroom, Certificate	0	0	0
International Development, Certificate	15	13	4
Government & History			
Deaf History, Certificate	0	1	1
Hearing, Speech, & Language Sciences			
Audiology, Au.D.	34	35	26
Audiology, Ph.D.	0	0	0
Speech-Language Pathology, M.S.	25	24	13
Interpretation			
Interpretation, M.A.	17	17	7
Linguistics			
Linguistics, Ph.D.	14	14	1
Linguistics, M.A.	19	17	1
Physical Education & Recreation			
Leisure Services Administration, M.S.	8	9	1
Psychology			
Clinical Psychology, Ph.D.	34	28	5
School Psychology, Psy.S.	19	17	7
Developmental Psychology, M.A.*	1	11	0
Clinical Psychology, M.A.*	1	2	0
Social Work			
Social Work, M.S.W.	31	27	4
TOTAL	405	405	142

This table includes dual degree enrollments.

Degree programs listed are the complete graduate degree offerings at the University, as of Fall 2003. Previously listed degree programs which have been omitted may no longer be offered at Gallaudet.

* The M.A. degrees in Developmental Psychology and Clinical Psychology are part of the School Psychology, Psy.S. and Clinical Psychology, Ph.D. programs, respectively. Students receive their M.A. degrees upon the successful completion of their comprehensive examinations.

This page left blank intentionally.

Degree-seeking Students

Fall 2004

Table 8	Degree-seeking Students "Snapshot" Profile, Fall 2004
Table 9	10-Year History of Degree-seeking Enrollment as Percentage of Total Enrollment, Fall 1995 to Fall 2004
Figure 3	10-Year History of Degree-seeking Student Fall Enrollment, Fall 1995 to Fall 2004
Figure 4a	5-Year History of Percentage of Students Living On-Campus, Fall 2000 to Fall 2004
Figure 4b	Dormitory Occupants by Student Category, Fall 2004
Table 10	Degree-seeking U.S. Students by State of Origin, Fall 2004
Table 11	Degree-seeking International Students by Country of Origin, Fall 2004
Table 12	Undergraduate Declared Majors and Minors by Discipline, Fall 2004
Table 13	Graduate Degree Program Enrollment by Discipline, Fall 2004

This page left blank intentionally.

**Table 8: Degree-seeking Students "Snapshot" Profile
Fall 2004**

	Male		Female		Full-Time		Part-Time		Deaf	Hearing	Unknown	Int'l	TUG*	Caucasian	Unknown
Undergraduates															
1st-Time Freshmen	106	121	227	0	225	2	0	21	77	128	1				
Other freshmen	125	134	252	7	247	7	5	24	86	143	6				
Sophomores	98	121	218	1	210	6	3	23	66	125	5				
Juniors	96	104	195	5	190	4	6	32	46	118	4				
Seniors	113	110	201	22	209	5	9	24	41	152	6				
Second Degree	3	5	5	3	8	0	0	1	1	6	0				
TOTAL (N=1,136)	541	595	1,098	38	1,089	24	23	125	317	672	22				
% of Degree-seeking Ugr.	48%	52%	97%	3%	96%	2%	2%	11%	28%	59%	2%				
FTE (FT + 1/3 PT) = 1,111			1,098	13											

	Male		Female		Full-Time		Part-Time		Deaf	Hearing	Unknown	Int'l	TUG*	Caucasian	Unknown
GRADUATES															
Certificates	0	17	4	13	6	10	1	0	1	11	5				
Masters	41	196	204	33	116	117	4	15	44	166	12				
Specialist	9	25	18	16	17	14	3	2	3	29	0				
Doctorates	23	110	73	60	37	93	3	4	33	85	11				
TOTAL (N=424)	73	348	299	122	176	234	11	21	81	291	28				
% of Degree-seeking Graduates	17%	82%	71%	29%	42%	55%	3%	5%	19%	69%	7%				
FTE (FT + 1/3 PT) = 341			299	41											

	Male		Female		Full-Time		Part-Time		Deaf	Hearing	Unknown	Int'l	TUG*	Caucasian	Unknown
UNIVERSITY															
TOTAL (N=1,560)	614	943	1,397	160	1,265	258	34	146	398	963	50				
% of Degree-seeking Students	39%	60%	90%	10%	81%	17%	2%	9%	26%	62%	3%				
FTE (FT + 1/3 PT) = 1,452			1,397	53											

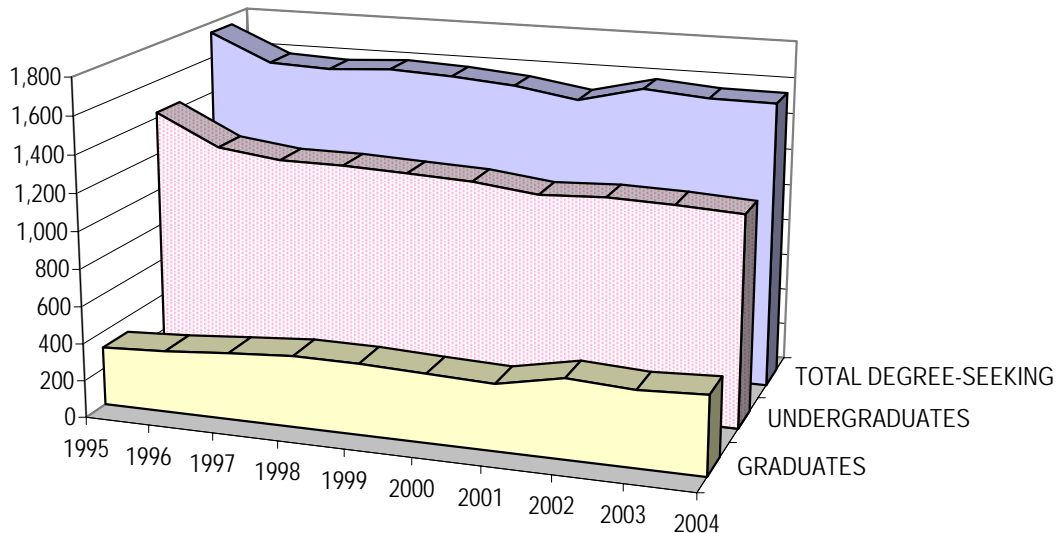
* TUG = Traditionally Under-represented Groups; includes students who self-identify as African-American, Asian-American, Native American, or Hispanic/Latino.

Table 9: 10-Year History of Degree-seeking Enrollment as Percentage of Total Enrollment, Fall 1995 to Fall 2004

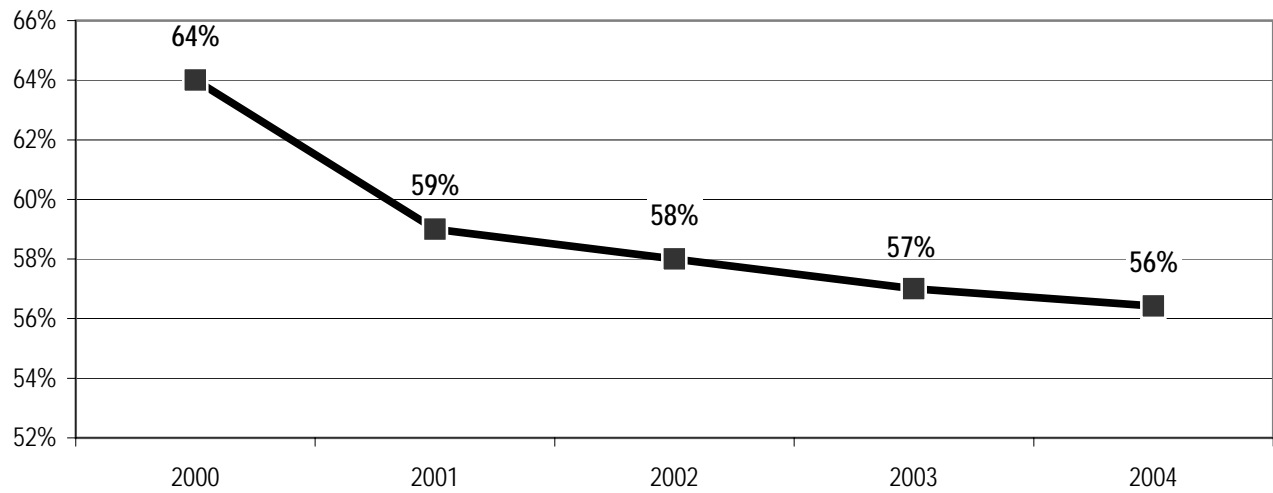
		1995	1996	1997	1998	1999	2000	2001	2002	2003	2004
UNDERGRADUATES	A.A.S.	8									
	Freshmen	583	481	476	501	503	537	451	481	484	486
	Sophomores	264	243	260	220	221	210	223	214	216	219
	Juniors	274	245	216	240	218	202	212	211	209	200
	Seniors	287	284	256	236	248	233	250	241	234	223
	Second Degree	12	8	11	20	13	6	11	16	11	8
	Sub-total	1,428	1,261	1,219	1,217	1,203	1,188	1,147	1,163	1,154	1,136
% of All Undergraduates	96%	94%	91%	94%	91%	90%	92%	94%	93%	94%	
GRADUATES	Certificate		1	0	1	0	10	9	60	21	17
	Masters	243	261	280	302	285	253	233	249	237	237
	Educational Specialist	1	0	1	0	2	2	0	1	20	34
	Doctorates	71	71	79	81	95	103	113	114	127	133
	Sub-total	315	333	360	384	382	368	355	424	405	421
	% of All Graduates	44%	49%	45%	56%	61%	51%	61%	54%	70%	68%
TOTAL DEGREE-SEEKING	1,743	1,594	1,579	1,601	1,585	1,556	1,502	1,587	1,559	1,557	
% of Total Enrollment	79%	79%	74%	81%	81%	76%	82%	78%	86%	85%	

"All Undergraduates" and "All Graduates" include non-degree seeking students.

**Figure 3: 10-Year History of Degree-seeking Student Fall Enrollment
Fall 1995 to Fall 2004**

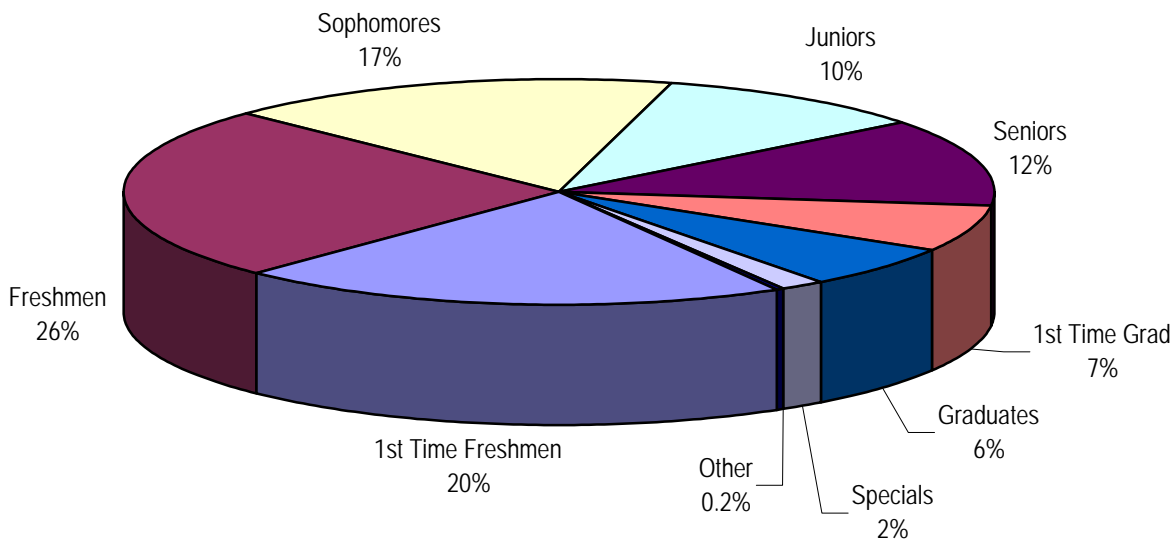


**Figure 4a: 5-Year History of Percentage of Students Living On-Campus
Fall 2000 to Fall 2004**



The percentage of students was determined by the number of students living on-campus divided by the total number of undergraduate and graduate students.

**Figure 4b: Dormitory Occupants by Student Category
Fall 2004**



**Table 10: Degree-seeking U.S. Students by State of Origin
Fall 2004**

	Under-graduate	Graduate
Alabama	5	1
Alaska	4	3
Arizona	23	4
Arkansas	1	0
California	107	25
Colorado	12	0
Connecticut	15	1
Delaware	6	2
District of Columbia	47	41
Florida	50	23
Georgia	19	2
Guam	0	0
Hawaii	4	2
Idaho	0	1
Illinois	36	10
Indiana	24	6
Iowa	8	3
Kansas	7	4
Kentucky	10	4
Louisiana	14	0
Maine	0	0
Maryland	94	75
Massachusetts	26	14
Michigan	20	1
Minnesota	24	6
Mississippi	1	1
Missouri	15	5
TOTAL STUDENTS	1,011	400

	Under-graduate	Graduate
Montana	1	0
Nebraska	5	0
Nevada	3	0
New Hampshire	2	0
New Jersey	26	7
New Mexico	3	6
New York	74	24
North Carolina	14	6
North Dakota	1	0
Ohio	35	10
Oklahoma	3	1
Oregon	10	1
Pennsylvania	51	22
Puerto Rico	0	1
Rhode Island	3	4
South Carolina	13	1
South Dakota	6	1
Tennessee	11	0
Texas	52	10
Utah	3	2
Vermont	1	0
Virginia	42	47
Washington	21	6
West Virginia	6	1
Wisconsin	27	7
Wyoming	0	0
Unknown	26	9
TOTAL STATES/TERR.	49	41

Top 5 States of Origin

	Undergraduate	Graduate
1.	California	Maryland
2.	Maryland	Virginia
3.	New York	District of Columbia
4.	Texas	California
5.	Pennsylvania	New York

Top 5 States of Origin

	Total Enrollment
1.	Maryland
2.	California
3.	New York
4.	District of Columbia
5.	Virginia

**Table 11: Degree-seeking International Students by Country of Origin
Fall 2004**

	Under-graduate	Graduate		Under-graduate	Graduate
Argentina	1	1	Korea, Republic of	3	0
Barbados	1	0	Kuwait	1	0
Belarus	1	0	Lebanon	1	0
Botswana	2	0	Mexico	0	1
Cameroon	0	1	Netherlands	3	0
Canada	53	5	Nigeria	4	1
Chile	2	0	Philippines	2	1
China	6	0	Rwanda	1	0
Congo	1	0	Saudi Arabia	2	0
Germany	0	1	Slovakia	1	0
Great Britain	1	0	South Africa	1	0
India	4	0	Spain	2	0
Ireland	1	1	Sweden	3	0
Israel	1	1	Taiwan, Rep. of China	1	0
Japan	2	2	Thailand	1	1
Kenya	1	1	Unknown	22	4
TOTAL STUDENTS	125	21	TOTAL COUNTRIES	28	12

Top 3 Countries of Origin

	Undergraduate	Graduate
1.	Canada	Canada
2.	China	Japan
3.	India & Nigeria (tied)	

Top 3 Countries of Origin

	Total Enrollment
1.	Canada
2.	China
3.	Japan, India, & Nigeria (tied)

In previous Enrollment Reports, this table listed non-degree seeking undergraduates enrolled in the ELI program. Those statistics are now listed on a separate table in the section focusing on non-degree seeking students.

**Table 12: Undergraduate Declared Majors and Minors by Discipline
Fall 2004**

Bachelor of Arts		Bachelor of Science		Minors	
Discipline	Students	Discipline	Students	Discipline	Students
American Sign Language	7	Accounting	20	Accounting	4
Art History	0	Biology	1	Art History	0
Biology	8	Business Administration	34	Business Administration	1
Chemistry	1	Chemistry	1	Chemistry	1
Communication Studies	36	Computer Information Systems	14	Communication Studies	5
Computer Science	1	Computer Science	5	Computer Information Systems	0
Deaf Studies	11	Economics	2	Computer Science	0
Digital Media	11	Education	0	Deaf Studies	1
Education	33	Family & Child Studies	18	Digital Media	3
English	6	Finance	1	Economics & Finance	8
French	4	Mathematics	0	English	3
Government	18	Physical Education	24	Family Studies	3
Graphic Design	1	Recreation & Leisure Studies	14	French	3
History	12	Sub-Total	134	German	1
Mathematics	10	Total Declared Majors	436	Government	2
Philosophy	3			Graphic Design	0
Psychology	23			Mathematics	1
Self-Directed Major	4			Philosophy	0
Social Work	40			Physical Education	4
Sociology	17			Psychology	6
Spanish	8			Recreation & Leisure Studies	1
Studio Art	39			Sociology	3
Theatre Arts	9			Spanish	9
Sub-Total	302			Studio Art	7
				Theatre Arts	4
				Women's Studies	0
				Total Declared Minors	70

Top 5 Majors by # of Students

1. Social Work
2. Studio Art
3. Communication Studies
4. Business Administration
5. Education

This table includes dual degree declarations.

Degree programs listed are the complete undergraduate degree offerings at the University, as of Fall 2004. Previously listed degree programs which have been omitted may no longer be offered at Gallaudet.

**Table 13: Graduate Degree Program Enrollment by Discipline
Fall 2004**

<u>Degree Program</u>	<u>Students</u>
Administration & Supervision	
Special Education Admin., Ph.D.	28
Change Leadership in Education, Ed.S.	13
Administration, M.S.	15
Leadership, Certificate	1
Management, Certificate	3

American Sign Language & Deaf Studies	
Deaf Studies, M.A.	28

Counseling	
Mental Health Counseling, M.A.	23
School Counseling & Guidance, M.A.	29

Education	
Deaf Education, Ph.D.	20
Deaf Education, Ed.S.	1
Deaf Education: Advanced Studies, M.A.	2
Deaf Education: Elementary, M.A.	20
Deaf Education: Family-Centered/ Early Education, M.A.	11
Deaf Education: Multiple Disabilities, M.A.	17
Deaf Education: Secondary, M.A.	4
Deaf Education: Special Programs, M.A.	3

Educational Foundations & Research	
Integrating Technology in the Classroom, Certificate	9
International Development, Certificate	15

Top 5 Degree Program Enrollments

1. Audiology, Au.D.
2. Social Work, M.S.W.
3. Clinical Psychology, Ph.D. and School Counseling & Guidance, M.A. (tied)
4. Special Education Admin., Ph.D. and Deaf Studies, M.A. (tied)
5. Speech-Language Pathology, M.S.

Degree programs listed are the complete graduate degree offerings at the University, as of Fall 2004. Previously listed degree programs which have been omitted may no longer be offered at Gallaudet.

* The M.A. degree in Developmental Psychology is a part of the School Psychology, Psy.S. program. Students receive their M.A. degree upon the successful completion of their comprehensive examinations.

<u>Degree Program</u>	<u>Students</u>
Government & History	
Deaf History, Certificate	0

Hearing, Speech, & Language Sciences	
Audiology, Au.D.	37
Audiology, Ph.D.	3
Speech-Language Pathology, M.S.	24
Non-clinical Hearing, Speech, and Language Sciences, M.S.	0

Interpretation	
Interpretation, M.A.	15

Linguistics	
Linguistics, Ph.D.	18
Linguistics, M.A.	12

Physical Education & Recreation	
Leisure Services Administration, M.S.	6

Psychology	
Clinical Psychology, Ph.D.	29
School Psychology, Psy.S.	20
Developmental Psychology, M.A.*	7

Social Work	
Social Work, M.S.W.	32

TOTAL	445
--------------	------------

This table includes dual degree enrollments.

This page left blank intentionally.

Non-degree Seeking Students

Fall 2004

Table 14	Non-degree Seeking Students "Snapshot" Profile, Fall 2004
Table 15	10-Year History of Non-degree Seeking Enrollment as Percentage of Total Enrollment, Fall 1995 to Fall 2004
Figure 5	10-Year History of Non-degree Student Fall Enrollment, Fall 1995 to Fall 2004
Table 16	Non-degree Seeking Students by State or Country of Origin, Fall 2004

This page left blank intentionally.

**Table 14: Non-degree Seeking Students "Snapshot" Profile
Fall 2004**

	Male	Female	Deaf	Hearing	Unknown	Int'l	TUG*	Caucasian	Unknown
UNDERGRADUATES									
Undergraduate Special	10	11	14	7	0	0	3	16	2
Exchange	0	0	0	0	0	0	0	0	0
Consortium	0	1	1	0	0	0	0	0	1
Visiting	0	8	0	8	0	0	0	8	0
International Interns	2	3	5	0	0	5	0	0	0
English Language Institute	21	15	1	0	35	31	2	0	3
TOTAL (N=71)	33	38	21	15	35	36	5	24	6
% of Non-degree Undergraduates	46%	54%	30%	21%	49%	51%	7%	34%	8%

	Male	Female	Deaf	Hearing	Unknown	Int'l	TUG*	Caucasian	Unknown
GRADUATE & PROFESSIONAL STUDIES									
Graduate Special	10	14	17	7	0	3	4	16	1
Consortium	0	1	1	0	0	0	0	1	0
International Interns	0	1	1	0	0	1	0	0	0
Professional Studies & Training	48	128	14	135	27	4	53	88	31
TOTAL (N=202)	58	144	33	142	27	8	57	105	32
% of Non-degree Graduates	29%	71%	16%	70%	13%	4%	28%	52%	16%

	Male	Female	Deaf	Hearing	Unknown	Int'l	TUG*	Caucasian	Unknown
UNIVERSITY									
TOTAL (N=273)	91	182	54	157	62	44	62	129	38
% of Degree-seeking Students	33%	67%	20%	58%	23%	16%	23%	47%	14%

* TUG = Traditionally Under-represented Groups; includes students who self-identify as African-American, Asian-American, Native American, or Hispanic/Latino.
Note: Academic Load is not included in this profile as all non-degree students are counted as part-time.

Table 15: 10-Year History of Non-degree Seeking Enrollment as Percentage of Total Enrollment, Fall 1995 to Fall 2004

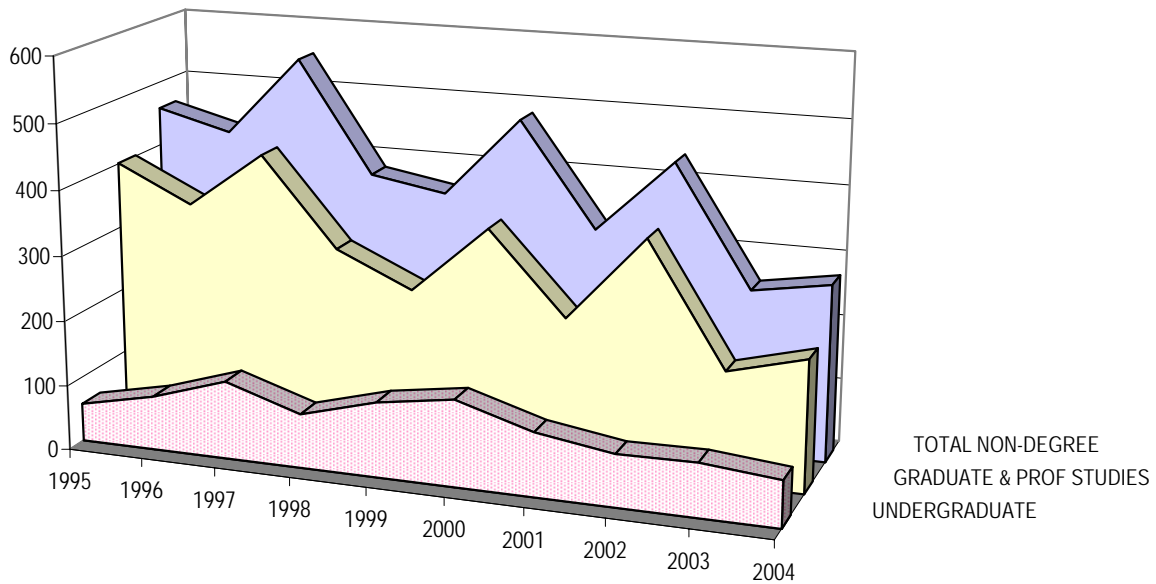
	1995	1996	1997	1998	1999	2000	2001	2002	2003	2004
UNDERGRADUATES										
Undergraduate Special	48	31	27	36	25	41	36	24	24	21
Exchange	0	1	0	0	0	0	1	1	0	0
Consortium									2	1
Visiting	10	9	5	10	10	6	13	9	5	8
Undergraduate Extension		42	88	32	74	63	21	15	23	0
International Interns				5	6	0	6	8	8	5
English Language Institute						23	21	23	20	36
Sub-total	58	83	120	83	115	133	98	80	82	71
% of All Undergraduates	4%	6%	9%	6%	9%	10%	8%	6%	7%	6%
GRADUATE & PROFESSIONAL STUDIES (GPS)										
Graduate Special*	68	54	72	40	35	63	35	62	101	25
Graduate Extension	205	178	268	185	124	194	88	115	†	†
International Interns				2	0	0	0	1	†	1
Prof Studies & Training	128	114	92	70	86	93	103	179	70	176
Sub-total	401	346	432	297	245	350	226	357	171	202
% of All GPS	56%	51%	55%	44%	39%	49%	39%	46%	30%	32%
TOTAL NON-DEGREE	459	429	552	380	360	483	324	437	253	273
% of Total Enrollment	21%	21%	26%	19%	19%	24%	18%	22%	14%	15%

"All Undergraduates" and "All GPS" include degree-seeking students.

* The Graduate Special count includes Consortium students.

† In 2003, Graduate Extension students and International Interns were included with the Graduate Special count. Beginning in 2004, counting rules for Graduate Extension students were changed so they are now included with Graduate Special students.

**Figure 5: Non-degree Student Fall Enrollment 10-Year History
Fall 1995 to Fall 2004**



**Table 16: Non-degree Seeking Students by State or Country of Origin
Fall 2004**

	U.S. Students			International Students		
	Under-graduate*	Graduate [†]	PST	Under-graduate*	Graduate [†]	PST
California	0	0	3	1	0	0
Colorado	0	0	2	0	0	1
District of Columbia	8	6	39	1	0	0
Florida	2	1	3	1	1	0
Georgia	0	0	2	1	0	0
Illinois	1	0	3	1	0	0
Iowa	1	0	4	2	0	0
Kansas	0	0	1	0	0	1
Maine	0	0	1	1	1	0
Maryland	13	9	54	1	0	0
Massachusetts	0	0	7	1	0	0
Michigan	1	0	1	1	0	0
Minnesota	1	0	3	7	0	0
Missouri	0	0	1	1	0	0
New Hampshire	0	0	3	2	0	0
New Jersey	0	0	1	1	0	0
New York	1	0	1	4	0	0
North Carolina	0	1	1	0	1	0
Ohio	1	2	0	1	0	0
Pennsylvania	0	0	1	1	0	0
Rhode Island	0	0	2	8	1	2
South Carolina	0	0	1			
Tennessee	0	0	1			
Texas	1	1	1			
Virginia	2	2	28			
Wisconsin	1	0	1			
Wyoming	0	0	1			
Unknown	2	0	6			
TOTAL STUDENTS	35	22	172	36	4	4
TOTAL STATES	12	7	26	17	3	2

* Undergraduate counts include students enrolled in ELI.

† Graduate counts include Graduate Special, Consortium, and International Interns.

This page left blank intentionally.

Admissions

Fall 2004

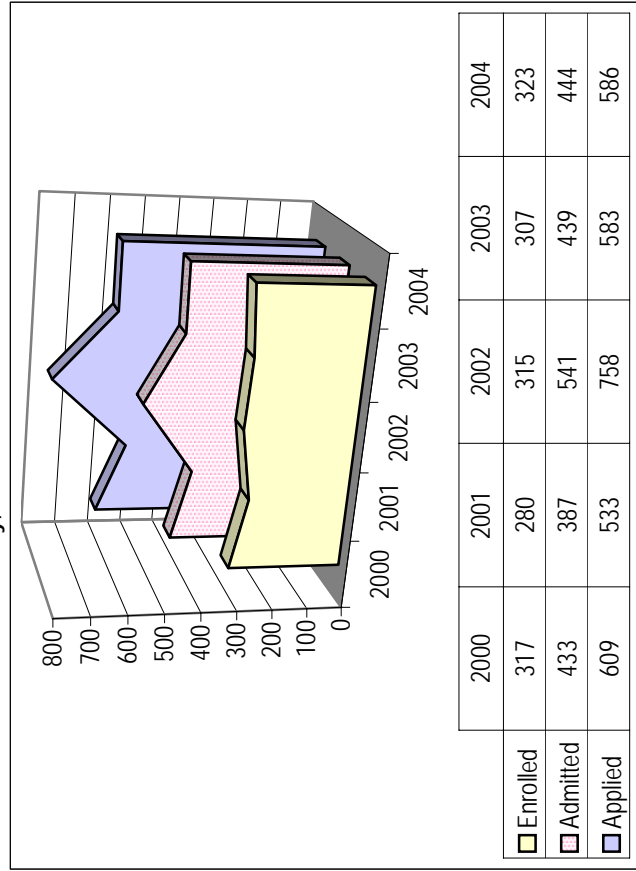
Table 17	Undergraduate and Graduate Applications, Admissions, and Enrollments, Fall 2004
Figures 6a & 6b	Undergraduate and Graduate Fall Application, Admission, and Enrollment History, Fall 2000 to Fall 2004
Table 18	Demographics of New Degree-seeking Undergraduate Students, Fall 2004
Figures 7a & 7b	English/Math Placement Test Results, Fall 2004
Figures 7c & 7d	Percentage of New Undergraduates who Tested into Freshman English/Math or Higher, 2000 to 2004
Table 19	Demographics of New Degree-seeking Graduate Students, Fall 2004

This page left blank intentionally.

**Table 17: Undergraduate and Graduate Applications, Admissions, and Enrollments
Fall 2004**

Undergraduate Admissions				
	Applied	Admitted	Enrolled	Enrollment Yield
New Freshmen	423	317	227	72%
Transfers	131	96	73	76%
Degree-seeking	554	413	300	73%
Special/Others	32	31	23	74%
TOTAL	586	444	323	73%

Figure 6a: Undergraduate Fall Application, Admission, and Enrollment History, Fall 2000 to Fall 2004

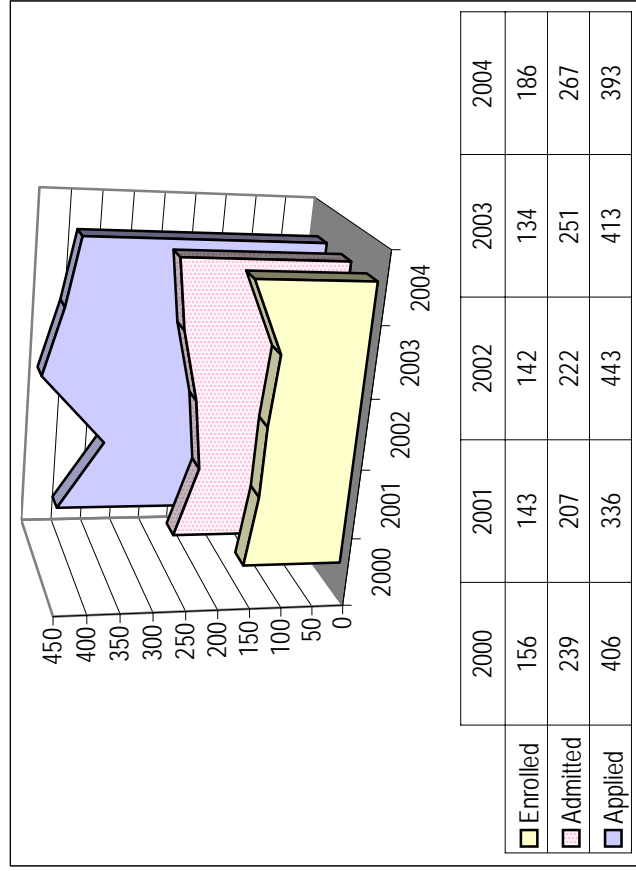


Graduate Admissions				
	Applied	Admitted	Enrolled	Enrollment Yield
New Graduates	362	237	160	68%
Special/Others*	31	30	26	87%
TOTAL	393	267	186	70%

Note: New Graduate Enrollment is by headcount, not by program enrollments.

* The Special/Others count does not include Professional Studies & Training students.

Figure 6b: Graduate Fall Application, Admission, and Enrollment History, Fall 2000 to Fall 2004



**Table 18: Demographics of New Degree-seeking Undergraduate Students
Fall 2004**

	1FR	TRN	ALL
Fall Enrollment	227	73	300

Age			
17-18	73	0	73
19	89	7	96
20-22	50	19	69
23-25	9	18	27
26-29	4	15	19
30-39	2	11	13
40+	0	3	3
Average Age	19.5	25.6	21.0

Gender			
Male	106	35	141
Female	121	38	159

Ethnic Background			
International	21	3	24
African-American	33	7	40
Asian-American	12	5	17
Native American	17	11	28
Hispanic/Latino	15	5	20
Caucasian	128	41	169
Unknown	1	1	2

Previous Institution			
Residential/Day Deaf Sch	130	15	145
Mainstreamed HS Program	98	36	134
Community College	1	12	13
College/University	3	13	16
Other	0	0	0

293 new undergraduates reported a previous institution. Of the 293, 15 students reported more than one previous institution. Therefore, the figures given above will not total 300 and may represent some individuals more than once.

1FR = First-time freshman

TRN = Transfer student

	1FR	TRN	ALL
Deafness in Family			
Deaf Family Members*	50	9	59
Both Parents	48	6	54
One Parent	4	0	4
Sibling(s)	56	15	71

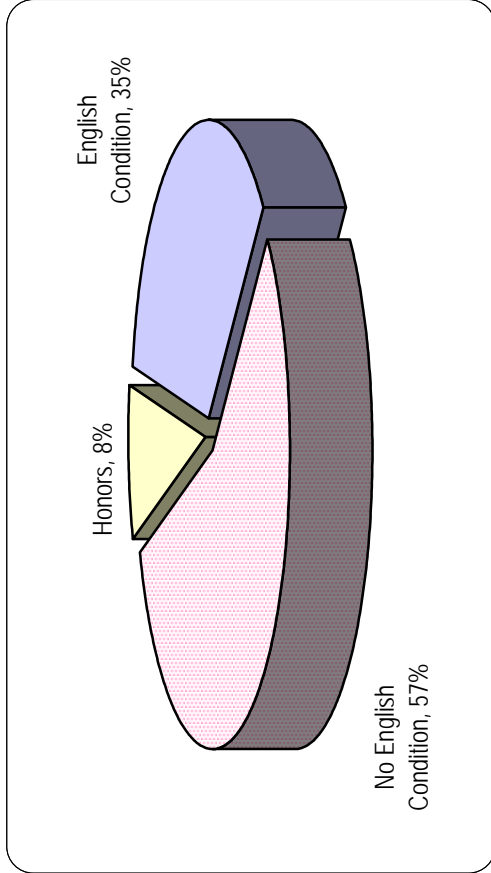
For this demographic, students may be counted in more than one category.

* Deaf Family Members = other than parent or sibling

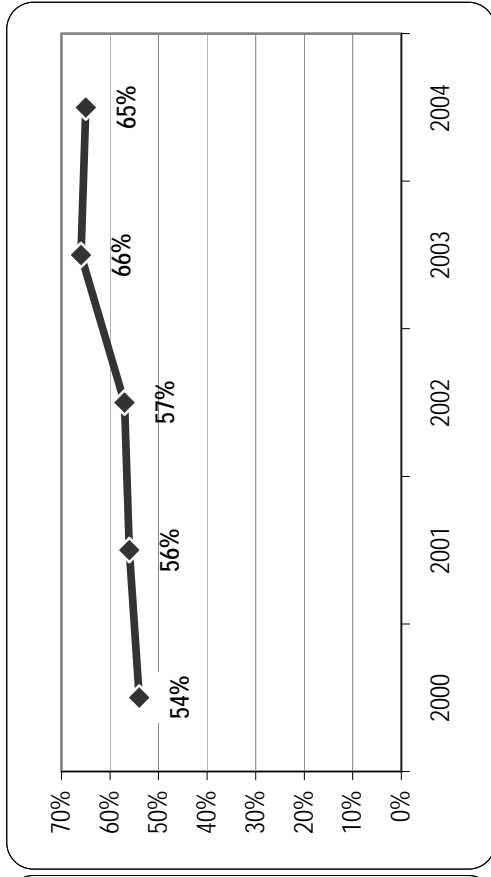
Self-rated Sign Ability			
Native/Excellent	141	35	176
Good	66	26	92
Fair	13	1	14
Poor	2	1	3
None	0	0	0
No Response	5	10	15

Transfer Students Detail Accepted as...	
Freshmen	40
Sophomores	23
Juniors	6
Seniors	3
Second Degrees	1

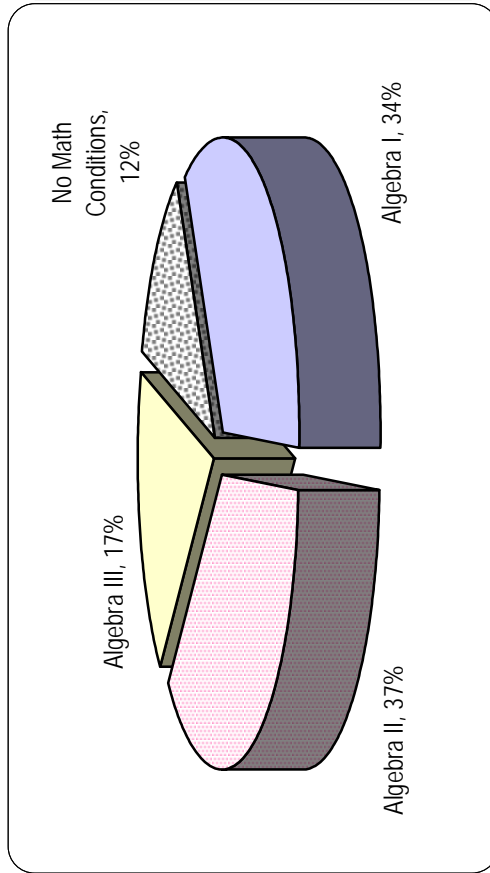
**Figure 7a: English Placement Test Results
Fall 2004**



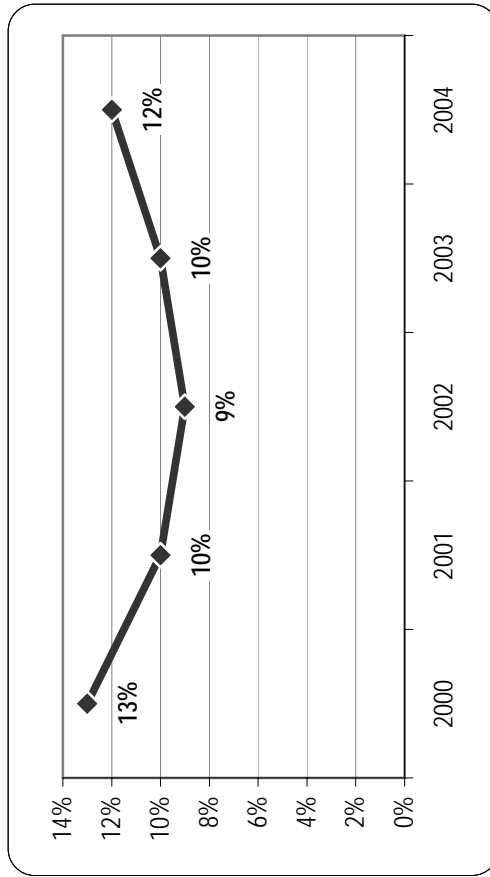
**Figure 7c: Percentage of New Undergraduates who
Tested into Freshman English or Higher, 2000 to 2004**



**Figure 7b: Math Placement Test Results
Fall 2004**



**Figure 7d: Percentage of New Undergraduates who
Tested into Freshman Math or Higher, 2000 to 2004**



**Table 19: Demographics of New Degree-seeking Graduate Students
Fall 2004**

Fall Enrollment	175
Dual Degree Candidates	15
Fall Headcount	160

Age	
21-25	68
26-29	44
30-39	41
40-49	5
50+	2
Average age	27.8

Gender	
Male	30
Female	130

Ethnic Background	
International	12
African-American	18
Asian-American	3
Native American	2
Hispanic/Latino	7
Caucasian	111
Unknown	7

Hearing Status	
Deaf/Hard of Hearing	79
Hearing	75
Unknown	6

By Degree*	
Certificate	9
Masters	114
Specialist	16
Doctorate	36

* Includes dual degree enrollments

Degree Program Enrollments	Enrolled*
Administration & Supervision	
Special Education Administration, Ph.D.	4
Change Leadership in Education, Ed.S.	8
Administration, M.S.	5
Leadership, Certificate	0
Management, Certificate	2
ASL & Deaf Studies	
Deaf Studies, M.A.	14
Counseling	
Mental Health, M.A.	13
School Counseling & Guidance, M.A.	6
Education	
Deaf Education, Ph.D.	7
Deaf Education, Ed.S.	1
Deaf Education, M.A.	21
Educational Foundations & Research	
Integrating Technology in the Classroom, Certificate	0
International Development, Certificate	7
Government & History	
Deaf History, Certificate	0
Hearing, Speech, & Language Sciences	
Audiology, Au.D.	12
Audiology, Ph.D.	3
Speech-Language Pathology, M.S.	12
Non-clinical Hearing, Speech & Language Sciences, M.S.	0
Interpretation	
Interpretation, M.A.	9
Linguistics	
Linguistics, Ph.D.	5
Linguistics, M.A.	7
Physical Education & Recreation	
Leisure Services Administration, M.S.	2
Psychology	
Clinical Psychology, Ph.D.	5
School Psychology, Psy.S.	7
Developmental Psychology, M.A.	7
Social Work	
Social Work, M.S.W.	18

Persistence, Attrition, and Graduation

Fall 2004

Table 20	Undergraduate One-Year Graduation, Attrition, and Persistence, Fall 2003 to Fall 2004
Table 21	Undergraduate Semester-to-Semester Graduation, Attrition, and Persistence, Fall 2003 to Spring 2004 and Spring 2004 to Fall 2004
Table 22	10-Year History of Undergraduate One-Year Attrition by Demographics, AY 1994-95 to 2003-04
Figure 8	10-Year History of Undergraduate One-Year Attrition, AY 1994-95 to AY 2003-04
Table 23	Long-term Retention Rates by 6-Year Cohort, Fall 1998 to Fall 2003
Table 24	10-Year History of Degrees Awarded by Type of Degree, AY 1994-95 to AY 2003-04
Table 25	Degrees Awarded by Demographics of Degree Recipients, AY 2003-04
Table 26	Undergraduate Degrees Awarded by Discipline, AY 2003-04
Table 27	Graduate Degrees Awarded by Discipline, AY 2003-04

This page left blank intentionally.

**Table 20: Undergraduate One-Year Graduation, Attrition, and Persistence
Fall 2003 to Fall 2004**

	Enrolled Fall 2003	Graduated	Dismissed	Withdrew	Persisted to Fall 2004
TOTAL	1,154	139	50	232	733
Percentage		12%	4%	20%	64%

<i>By Class</i>					
Freshmen	484	0 <i>0%</i>	36 <i>7%</i>	132 <i>27%</i>	316 <i>65%</i>
Sophomores	216	0 <i>0%</i>	7 <i>3%</i>	33 <i>15%</i>	176 <i>81%</i>
Juniors	209	13 <i>6%</i>	6 <i>3%</i>	38 <i>18%</i>	152 <i>73%</i>
Seniors	234	120 <i>51%</i>	1 <i>0%</i>	26 <i>11%</i>	87 <i>37%</i>
Second Degree	11	6 <i>55%</i>	0 <i>0%</i>	3 <i>27%</i>	2 <i>18%</i>

<i>By Gender</i>					
Men	538	50 <i>9%</i>	28 <i>5%</i>	104 <i>19%</i>	356 <i>66%</i>
Women	616	89 <i>14%</i>	22 <i>4%</i>	128 <i>21%</i>	377 <i>61%</i>

<i>By Race/Ethnicity</i>					
International	122	12 <i>10%</i>	9 <i>7%</i>	12 <i>10%</i>	89 <i>73%</i>
African-American	127	11 <i>9%</i>	5 <i>4%</i>	28 <i>22%</i>	83 <i>65%</i>
Asian-American	62	9 <i>15%</i>	6 <i>10%</i>	12 <i>19%</i>	35 <i>56%</i>
Native American	19	1 <i>5%</i>	1 <i>5%</i>	6 <i>32%</i>	11 <i>58%</i>
Hispanic/Latino	84	10 <i>12%</i>	3 <i>4%</i>	12 <i>14%</i>	59 <i>70%</i>
Caucasian	708	94 <i>13%</i>	23 <i>3%</i>	154 <i>22%</i>	437 <i>62%</i>
Unknown	32	2 <i>6%</i>	3 <i>9%</i>	8 <i>25%</i>	19 <i>59%</i>

The one-year attrition rates in the table above are for Fall-to-Fall enrollment. They do not include students who were newly admitted and enrolled in the Spring.

**Table 21: Undergraduate Semester-to-Semester Graduation, Attrition, and Persistence
Fall 2003 to Spring 2004 and Spring 2004 to Fall 2004**

	Enrolled Fall 2003	Graduated	Dismissed	Withdraw	Persisted to Spring 2004	Enrolled Spring 2004	Graduated	Dismissed	Withdraw	Persisted to Fall 2004
Total	1,154	21	50	127	956	1,063	118	35	145	765
By Class										
Freshmen	484	0	36	78	370	349	0	22	58	269
Sophomores	216	0	7	21	188	207	0	9	27	171
Juniors	209	0	6	16	187	207	0	4	27	176
Seniors	234	20	1	10	203	291	113	0	31	147
2nd Degree	11	1	0	2	8	9	5	0	2	2
By Gender										
Male	538	5	28	67	438	494	45	21	64	364
Female	616	16	22	60	518	569	73	14	81	401
By Race/Ethnicity										
International	122	3	9	8	102	118	9	8	8	93
African-American	127	1	5	16	105	120	10	3	17	90
Asian-American	62	1	6	10	45	53	7	5	6	35
Native American	19	0	1	5	13	15	1	0	1	13
Hispanic/Latino	84	1	3	5	75	81	10	1	8	62
Caucasian	708	15	23	76	594	654	79	17	102	456
Unknown	32	0	3	7	22	22	2	1	3	16

The Spring 2004 Enrollment counts incorporate new and returning degree-seeking students. As a result, combined totals for the semester-to-semester graduation, attrition, and persistence statistics may not equal the one-year graduation, attrition, and persistence figures in Table 20.

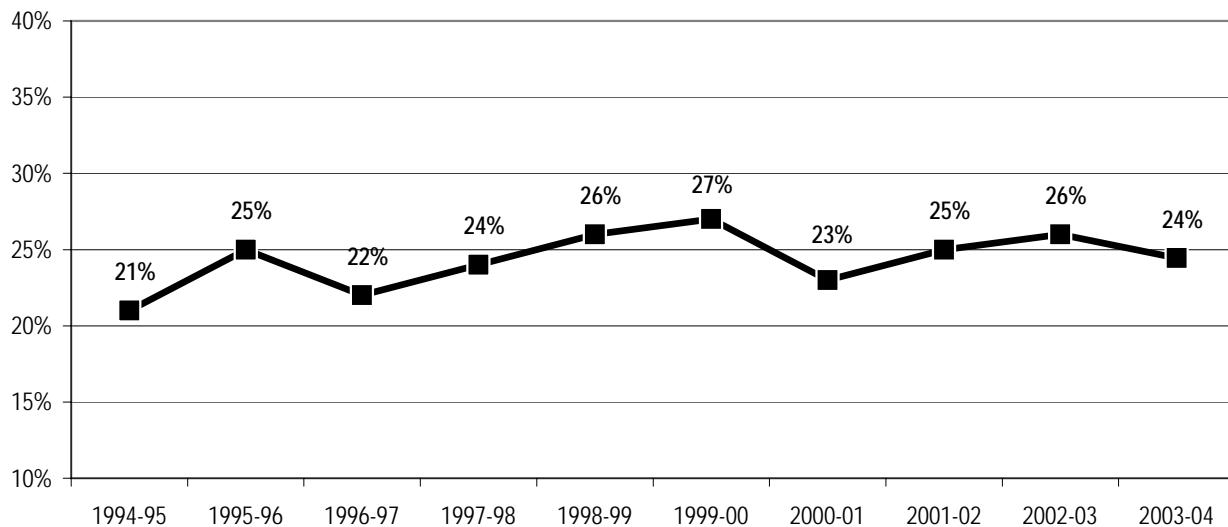
**Table 22: 10-Year History of Undergraduate One-Year Attrition by Demographics
AY 1994-95 to AY 2003-04**

	1994-95	1995-96	1996-97	1997-98	1998-99	1999-00	2000-01	2001-02	2002-03	2003-04
Total	21%	25%	22%	24%	26%	27%	23%	25%	26%	24%
By Class										
Freshmen	33%	38%	35%	38%	36%	36%	36%	35%	39%	35%
Sophomores	19%	22%	19%	20%	16%	21%	20%	27%	22%	19%
Juniors	11%	13%	13%	13%	20%	18%	13%	20%	16%	21%
Seniors	6%	10%	11%	12%	19%	23%	13%	13%	15%	12%
2nd Degree	N/A	N/A	N/A	N/A	N/A	46%	25%	27%	44%	27%
By Gender										
Male	24%	27%	26%	25%	30%	29%	25%	27%	30%	25%
Female	19%	23%	19%	22%	22%	25%	23%	22%	24%	24%
By Race/Ethnicity										
International/TUG	21%	25%	23%	23%	25%	28%	26%	24%	26%	24%
Caucasian	24%	26%	24%	28%	30%	30%	21%	27%	28%	25%

The one-year attrition rates in the table above are for Fall-to-Fall enrollment. They do not include students who were newly admitted and enrolled in the Spring.

Percentages may not equal figures in Table 20 due to rounding. However, the 2003-04 figures in both Tables 20 and 22 are based on the same data.

**Figure 8: 10-Year History of Undergraduate One-Year Attrition
AY 1994-95 to AY 2003-04**



**Table 23: Long-term Retention Rates by 6-Year Cohort
Fall 1998 to Fall 2003**

All Students										
		Retained						Graduated*		
Year	Enrolled	After 1 Year	After 2 Years	After 3 Years	After 4 Years	After 5 Years	After 6 Years	Within 4 years	Within 5 years	Within 6 years
1998	331	60%	47%	40%	27%	17%	8%	11%	21%	28%
1999	322	64%	49%	42%	31%	18%		9%	19%	
2000	313	65%	48%	40%	27%			11%		
2001	270	69%	44%	37%						
2002	315	67%	48%							
2003	307	70%								

First-time Freshmen										
		Retained						Graduated*		
Year	Enrolled	After 1 Year	After 2 Years	After 3 Years	After 4 Years	After 5 Years	After 6 Years	Within 4 years	Within 5 years	Within 6 years
1998	230	63%	49%	43%	31%	19%	9%	3%	16%	26%
1999	254	63%	47%	42%	33%	18%		6%	17%	
2000	241	66%	48%	39%	29%			7%		
2001	213	68%	44%	39%						
2002	237	61%	41%							
2003	238	70%								

Transfers										
		Retained						Graduated*		
Year	Enrolled	After 1 Year	After 2 Years	After 3 Years	After 4 Years	After 5 Years	After 6 Years	Within 4 years	Within 5 years	Within 6 years
1998	101	54%	44%	35%	18%	11%	6%	21%	29%	33%
1999	68	69%	59%	44%	25%	18%		21%	26%	
2000	72	61%	50%	43%	19%			25%		
2001	57	74%	46%	28%						
2002	78	83%	68%							
2003	69	71%								

* The Graduated percentages are cumulative.

**Table 24: 10-Year History of Degrees Awarded by Type of Degree
AY 1994-95 to AY 2003-04**

	Associates	Bachelors	Graduate Certificates	Masters	Specialists	Doctorates	TOTAL
1994-95	6	231	N/A	110	9	9	365
1995-96	8	185	N/A	108	7	12	320
1996-97	N/A	201	N/A	102	8	5	316
1997-98	N/A	174	N/A	98	8	5	285
1998-99	N/A	146	N/A	125	8	7	286
1999-00	N/A	155	N/A	129	6	6	296
2000-01	N/A	142	N/A	104	6	11	263
2001-02*	N/A	174	N/A	92	9	10	285
2002-03	N/A	147	N/A	117	4	16	284
2003-04	N/A	155	2	116	6	16	295

* Based on data provided to IPEDS, Fall 2002.

The table above includes dual degrees awarded.

**Table 25: Degrees Awarded by Demographics of Degree Recipients
AY 2003-04**

	Bachelors	Graduate Certificates [†]	Masters	Specialists	Doctorates	Total
By Gender						
Male	54	1	16	1	4	75
Female	93	1	98	5	12	208
By Race/Ethnicity						
International	11	0	6	0	1	18
African-American	12	1	16	1	3	32
Asian-American	10	0	0	0	1	11
Native American	1	0	1	0	0	2
Hispanic/Latino	10	0	4	0	0	14
Caucasian	101	1	79	4	10	194
Unknown	2	0	8	1	1	12
TOTAL	147	2	114	6	16	283

[†] The recipients of Graduate Certificates also received Masters Degrees and are not included in the Total.

Total Undergraduate Degrees Awarded = 155

Total Undergraduate Recipients = 147

Total Graduate Degrees Awarded = 140

Total Graduate Recipients = 136

**Table 26: Undergraduate Degrees Awarded by Discipline
AY 2003-04**

Bachelor of Arts		Bachelor of Science	
Major	Students	Major	Students
American Sign Language	8	Accounting	7
Biology	5	Biology	2
Chemistry	1	Business Administration	9
Communication Studies	17	Chemistry	1
Computer Science	2	Computer Information Systems	1
Deaf Studies	5	Computer Science	1
Education	10	Economics & Finance	0
English	4	Education	0
French	1	Family & Child Studies	16
Government	3	Mathematics	1
History	5	Physical Education	4
Integrative Arts	11	Recreation & Leisure Studies	0
Mathematics	3	Self-Directed Major	0
Philosophy	1	Sub-Total	42
Psychology	16		
Self-Directed Major	1		
Social Work	8		
Sociology	5		
Spanish	5		
Television & Photography	1		
Theatre Arts	1		
Sub-Total	113	Total Degrees Awarded	155

This table includes dual degree awards.

Top 5 Disciplines by Degrees Awarded

1. Communication Studies
2. Family & Child Studies; Psychology (tied)
3. Integrative Arts
4. Education
5. Business Administration

Degree programs listed are the complete undergraduate degree offerings from the 2003-2004 Undergraduate Course Catalog.

**Table 27: Graduate Degrees Awarded by Discipline
AY 2003-04**

Degree Program	Students
Administration & Supervision	
Special Education Admin., Ph.D.	2
Instructional Supervision, Ed.S.	0
Administration, M.S.	6
Leadership, Certificate	0
Management, Certificate	2
American Sign Language & Deaf Studies	
Deaf Studies, M.A.	5
Counseling	
Mental Health Counseling, M.A.	15
Community Counseling, M.A.	0
School Counseling & Guidance, M.A.	13
Education	
Deaf Education, Ph.D.	2
Deaf Education, Ed.S.	0
Deaf Education: Advanced Studies, M.A.	1
Deaf Education: Elementary, M.A.	5
Deaf Education: Family-Centered/ Early Education, M.A.	5
Deaf Education: Multiple Disabilities, M.A.	4
Deaf Education: Secondary, M.A.	0
Deaf Education: Special Programs, M.A.	9
Educational Foundations & Research	
Integrating Technology in the Classroom, Certificate	0
International Development, Certificate	0

Top 5 Disciplines by Degrees Awarded

1. Mental Health Counseling, M.A.
2. School Counseling & Guidance, M.A.
3. Speech-Language Pathology, M.S.
4. Social Work, M.S.W.
5. Deaf Education: Special Programs, M.A.

Degree programs listed are the complete graduate degree offerings from the 2003-2004 Graduate Course Catalog.

* The M.A. degree in Developmental Psychology is part of the School Psychology, Psy.S. program. Students receive their M.A. degrees upon the successful completion of their comprehensive examinations.

Degree Program	Students
Government & History	
Deaf History, Certificate	0
Hearing, Speech, & Language Sciences	
Audiology, Au.D.	5
Audiology, Ph.D.	0
Speech-Language Pathology, M.S.	12
Non-clinical Hearing, Speech, and Language Sciences, M.S.	1
Interpretation	
Interpretation, M.A.	9
Linguistics	
Linguistics, Ph.D.	0
Linguistics, M.A.	6
Physical Education & Recreation	
Leisure Services Administration, M.S.	3
Psychology	
Clinical Psychology, Ph.D.	7
Clinical Psychology, M.A.	1
School Psychology, Psy.S.	6
Developmental Psychology, M.A.*	10
Social Work	
Social Work, M.S.W.	11
TOTAL	140

This table includes dual degree awards.

This page left blank intentionally.

Glossary

Term	Definition
6-year Cohort	A cohort is a specific group of students selected for tracking purposes. The National Center for Education Statistics, for which the University is a contributor through the Integrated Post-secondary Education Data System (IPEDS), generally follows students for six years to measure graduation, attrition, and retention rates.
Academic Dismissal	Academic dismissal is the involuntary withdrawal of a student based on unsatisfactory academic performance. There are two conditions under which a student may be academically dismissed: the student's GPA falls below 2.00 (1.75 for freshmen); the student does not satisfy conditions placed upon their admission to the University. Students must wait one full academic term to reapply for admission to Gallaudet; readmissions are not considered for summer terms.
Academic Year	The Gallaudet Academic Year (AY) includes the fall, spring, and summer semesters. For the purposes of this report, data are tabulated from the Fall Census Date to the final day for grade submissions for the Summer term. Generally, these dates are early September to late August.
Attrition	Attrition is the withdrawal of a student before the completion of degree requirements. Students may withdraw either voluntarily or involuntarily from the University. Students who leave the University may, upon successful reapplication, return and graduate from the University.
Census Date	The census date is the date on which student data in the Gallaudet PeopleSoft system is frozen; the resulting data set is then used to calculate all official University statistics. The census date falls on the 15th calendar day after the first day of classes for each term.
Certificate students	Certificate students are students who are enrolled in graduate-level courses and whose courses of study lead to Certificates in any of the following areas: Leadership, Management, Integrating Technology in the Classroom, and International Development.
Consortium students	Consortium students are students who are matriculated at one of the member institutions of the Consortium of Universities in the Metropolitan Washington Area (CUWMA) and who are enrolled in courses towards their degrees at Gallaudet. Students may be deaf, hard of hearing, or hearing. For a full list of CUWMA member institutions, see www.consortium.org .
Doctoral students	Doctoral students are students who are enrolled in graduate-level courses and whose courses of study lead to a Doctorate of Philosophy (Ph.D.) or Doctorate of Audiology (Au.D.) degree.
Dual degree students	Students who are enrolled in two academic programs simultaneously and who have declared their intention to pursue two degrees to the University are considered dual degree students. For the purposes of this report, simultaneous degree program students in the graduate school are counted as dual degree students.
English Language Institute (ELI) students	ELI students are students for whom English and American Sign Language are second languages; they are usually international students who need supplemental instruction in English before taking University courses.
Enrollment	Enrollment is the count of registrations at Gallaudet during the course of one academic term or one academic year. For example, students who are enrolled as double majors are counted twice for enrollment purposes; however, they are counted only once for headcount purposes.

Term	Definition
Enrollment Yield	Enrollment yield is calculated as the ratio between students who matriculated at Gallaudet to those who were offered admission.
Exchange students	Exchange students are juniors or seniors who are matriculated at an accredited higher education institution with which Gallaudet has an exchange agreement and who are enrolled at Gallaudet in courses towards their degrees at their home institutions. Currently, exchange institutions include Oberlin College (Oberlin, Ohio) and McDaniel College (Westminster, Maryland). Students may be deaf, hard of hearing, or hearing.
First-time Freshmen	First-time freshmen are students who have no previous college experience, who have satisfactorily completed the admissions process, and who have been accepted for study at Gallaudet.
Freshman students	Freshmen are undergraduate students who have earned fewer than 25 semester hours of coursework towards a degree.
Full Time Equivalent (FTE)	Full Time Equivalent (FTE) is the count of enrollments at Gallaudet based on registered credit hours. It provides a formula by which to count part-time student enrollment as a proportion of full-time student enrollment. The formula which Gallaudet uses to calculate FTE is (Full-time enrollment) + (1/3 Part-time enrollment).
Full-time graduate enrollment	Graduate students must enroll for a minimum of 9 credit hours per semester to qualify as full-time graduate enrollments.
Full-time undergraduate enrollment	Undergraduate students must enroll for a minimum of 12 credit hours per semester to qualify as full-time undergraduate enrollments.
Graduate Degree-seeking students	Degree-seeking graduate students are those students whose courses of study are designed to result in the conferring of a degree from the University. They include students categorized as certificate, masters, specialist, and doctoral students.
Graduate Extension students	These are students taking graduate-level courses through Gallaudet's extension offerings, either at a regional center, via distance education instruction, or some combination of both. This category does not include those students who are matriculated as degree-seeking graduate students who elect to take an extension course to supplement their studies.
Graduate Non-degree seeking students	Non-degree seeking graduate students are those students whose courses of study do not lead to the conferral of a degree from Gallaudet University. They are enrolled as graduate extension students or international interns. Non-degree seeking students may receive a degree from another institution.
Graduate Special students	Students who do not intend to pursue a degree and who wish to enroll in graduate-level courses are considered Graduate Special students. Acceptance requires approval of the Dean of the College of Liberal Arts, Sciences, and Technology or the Dean of the Graduate School and Professional Programs.
Graduation	Graduation is the University's official conferral of an academic degree upon a student. Only students who have completed their degree requirements and who remain in good standing with the University are eligible for graduation.

Term	Definition
Headcount	Headcount is the count of unique individuals enrolled at Gallaudet during the course of one academic term or one academic year. For example, when determining academic year statistics, students who are enrolled in consecutive fall, spring, and summer terms are counted only once for headcount purposes; however, they are counted three times for enrollment purposes (once per term registered).
International Interns	International interns are students from foreign countries who do not intend to pursue a degree and who are enrolled in academic courses at Gallaudet. They can be enrolled at either the undergraduate or graduate level.
Juniors	Juniors are undergraduate students who have satisfactorily completed at least 56 semester hours of coursework towards a degree.
Masters students	Masters students are students who are enrolled in graduate-level courses and whose courses of study lead to a Master of Arts (M.A.), Master of Science (M.S.), or Master of Social Work (M.S.W.) degree.
Other freshmen	Other freshmen includes students who have had some previous college experience, who have satisfactorily completed the admissions process, and who have been accepted for study at Gallaudet.
Part-time graduate enrollment	Graduate students who are enrolled for fewer than 9 credit hours per semester are considered part-time graduate enrollments.
Part-time undergraduate enrollment	Undergraduate students who are enrolled for fewer than 12 credit hours per semester are considered part-time undergraduate enrollments.
PeopleSoft	PeopleSoft is the transactional data system used by Gallaudet to enter information about students, faculty, and staff.
Persistence	Persistence is the continuation of a student towards his/her academic degree from one academic term to the next.
Professional Studies students	Students who are enrolled in Professional Studies and Training (PST) courses at Gallaudet and who are not pursuing an undergraduate or graduate degree are considered Professional Studies students. PST courses earn credits but are not applied towards a degree; however, select PST courses may result in a professional certificate.
Racial/Ethnic Categories	The racial/ethnic category labels used in this report are taken from the U.S. Department of Education. These categories are the same as those used on federal reports related to diversity statistics.
Retention	Retention is the measure of students who return each term to continue their academic degree programs at Gallaudet. It does not include students who graduate from Gallaudet. Retention may be calculated on a year-to-year or semester-to-semester basis.
Second Degree students	Undergraduate students who have already received a baccalaureate degree from an accredited college or university and who have been accepted to Gallaudet to pursue a second baccalaureate degree are enrolled as second degree students. These students do not include those undergraduates who pursue two majors concurrently during their first enrollment at Gallaudet. However, they do include those students who received a bachelors from Gallaudet and return to the University for their second.

Term	Definition
Seniors	Seniors are undergraduate students who have satisfactorily completed at least 90 semester hours of coursework towards a degree.
Sophomores	Sophomores are undergraduate students who have satisfactorily completed at least 25 semester hours of coursework towards a degree.
Special students	See definitions for "Graduate Special students" and "Undergraduate Special students."
Specialist students	Specialist students are students who are enrolled in graduate-level courses and whose courses of study lead to a Education Specialist (Ed.S.) or Psychology Specialist (Psy.S.) degree.
Traditionally Under-represented Groups (TUGs)	Traditionally Under-represented Groups (TUGs) include those individuals who self-identify as either African-American, Asian-American, Native American, or Hispanic/Latino.
Transfer students	Students who have completed coursework at another accredited college or university may be accepted to Gallaudet as transfer students. Transfer students must be enrolled for at least their senior year (24 credit hours) and must complete at least half of their major requirements at Gallaudet.
Undergraduate Degree-seeking students	Degree-seeking undergraduate students are those students whose courses of study are designed to result in the conferring of a degree from the University. They include students categorized as freshmen, sophomores, juniors, seniors, transfers, and second degree students.
Undergraduate Extension students	These are students taking undergraduate-level courses through Gallaudet's extension offerings, either at a regional center, via distance education instruction, or some combination of both. This category does not include those students who are matriculated as degree-seeking undergraduate students who elect to take an extension course to supplement their studies.
Undergraduate Non-degree seeking students	Non-degree seeking undergraduate students are those students whose courses of study do not lead to the conferral of a degree from Gallaudet University. They are enrolled as special, exchange, visiting, Consortium, undergraduate extension, or English Language Institute students or as international interns. Non-degree seeking students may receive a degree from another institution.
Undergraduate Special students	Students who do not intend to pursue a degree and who wish to enroll in undergraduate-level courses are considered Undergraduate Special students. Acceptance requires approval of the Dean of the College of Liberal Arts, Sciences, and Technology or the Dean of the Graduate School and Professional Programs.
Visiting students	Visiting students are sophomores, juniors, or seniors who are matriculated at an accredited college or university and who wish to take courses towards their degrees at Gallaudet. They may be deaf, hard of hearing, or hearing.
Withdrawal	Withdrawal is a voluntary leave of absence from the University. Students must complete a leave of absence form if they wish to re-enroll at Gallaudet in any future academic term. Students who do not complete a leave of absence form may be required to apply for readmission to the University.