

Fall Enrollment Report

AY0708



Office of Institutional Research
May, 2008

Table of Contents

		Page
Chart	Student Body Profiles	
1	Freshman applications, admissions, and enrollments	3
2	New Graduate applications, admissions, and enrollments	3
3	Freshmen by Gender and Traditionally Underrepresented Groups	4
4	New Graduate Students by Gender and Traditionally Underrepresented Groups	4
5	English & Math Placement Test Results for New Freshmen	5
6	ACT English Scores for New Freshman	5
7	ACT Reading Scores for New Freshman	6
8	ACT Mathematics Scores for New Freshman	6
9	Student Hearing Status by Degree Program	7
10	Undergraduate self-rated signing skill	7
11	Total University enrollment	8
12	University Enrollment by Gender	8
13	Undergraduate enrollment by ethnicity	9
14	Graduate enrollment by ethnicity	9
15	Degree-seeking Undergraduates by State, District or Territory	10
16	Degree-seeking Graduate Students by State, District or Territory	12
17	Degree-seeking International Students by Country of Origin	14
	Program Characteristics	
18	Graduate Degree Program Enrollment by Discipline	16
19	Average class size by department, fall semester	17
	Retention & Program Completion	
20	First time freshmen cohort retention	20
21	First time freshmen cohort graduation rate	20
22	Graduate program years to completion	21

Student Body Profiles

Chart 1

Freshmen Applications, Admissions, and Enrollments

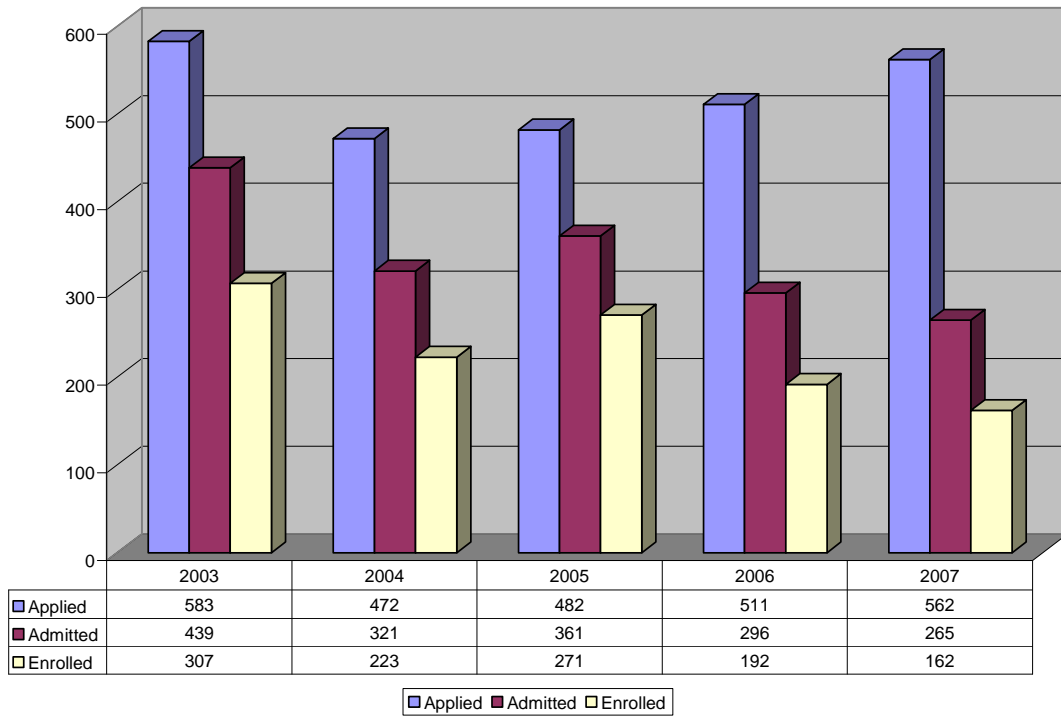


Chart 2

New Graduate Applications, Admissions, and Enrollments

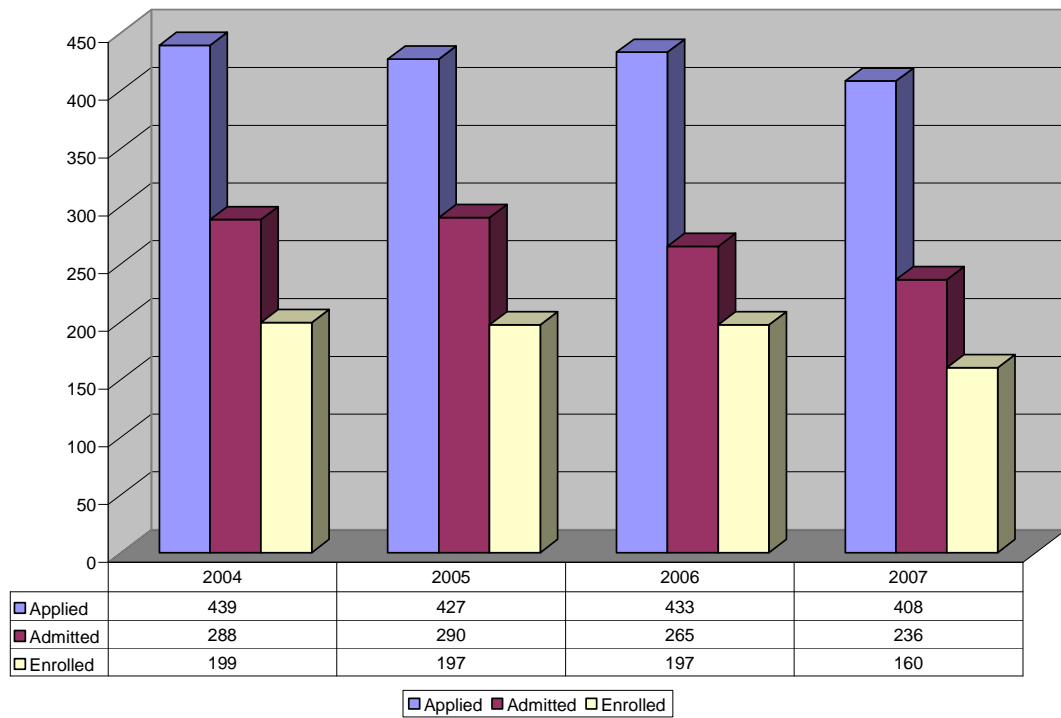


Chart 3

Freshmen by Gender and Traditionally Underrepresented Groups

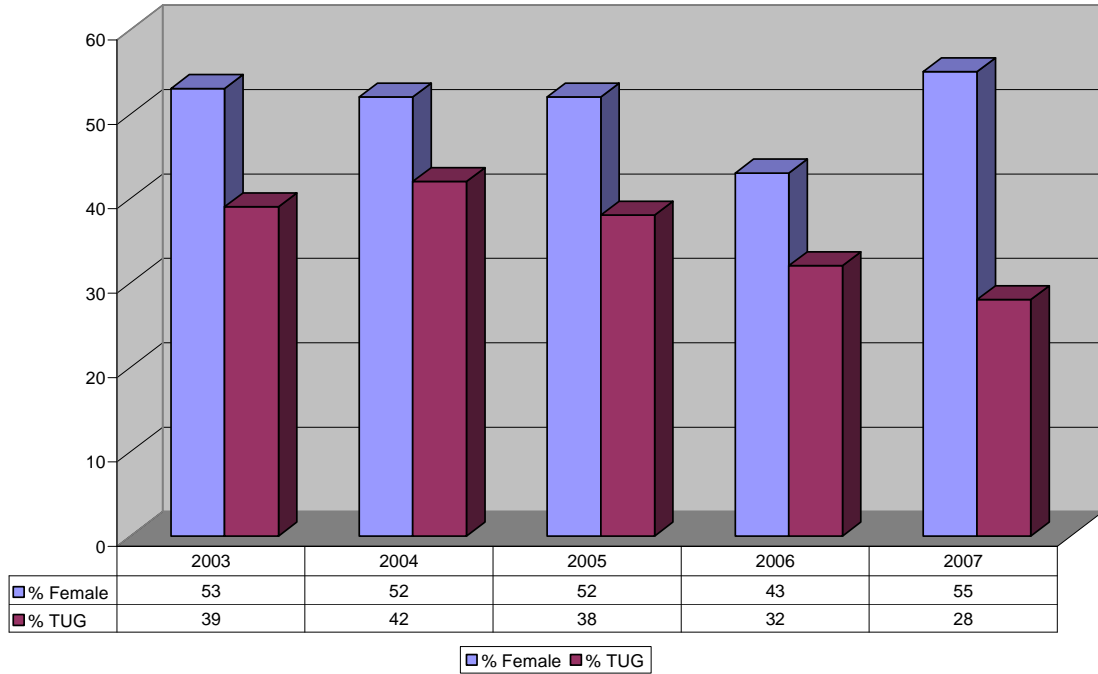


Chart 4

New Graduate Students by Gender and Traditionally Underrepresented Groups

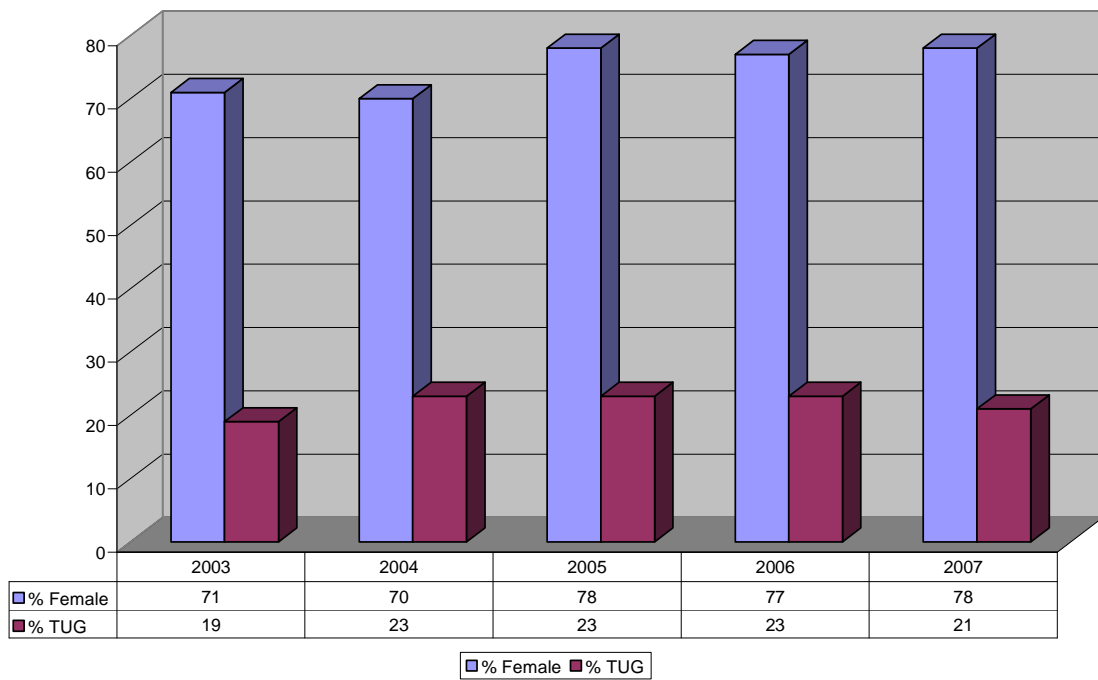


Chart 5

English & Math Placement Tests for New Freshmen

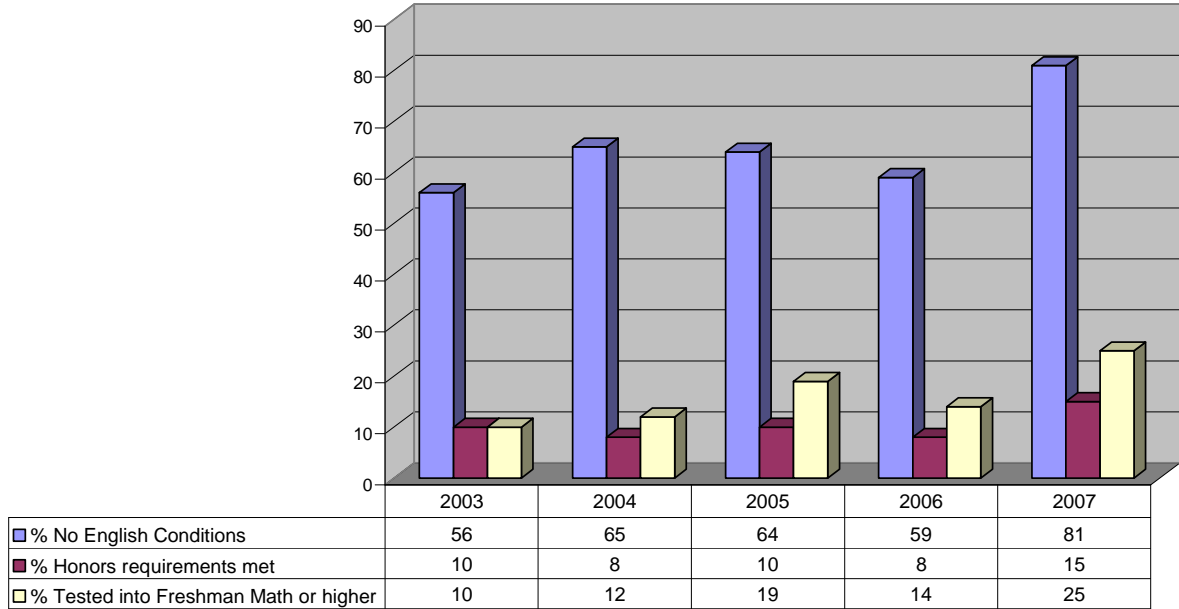


Chart 6

English ACT Score for New Freshmen

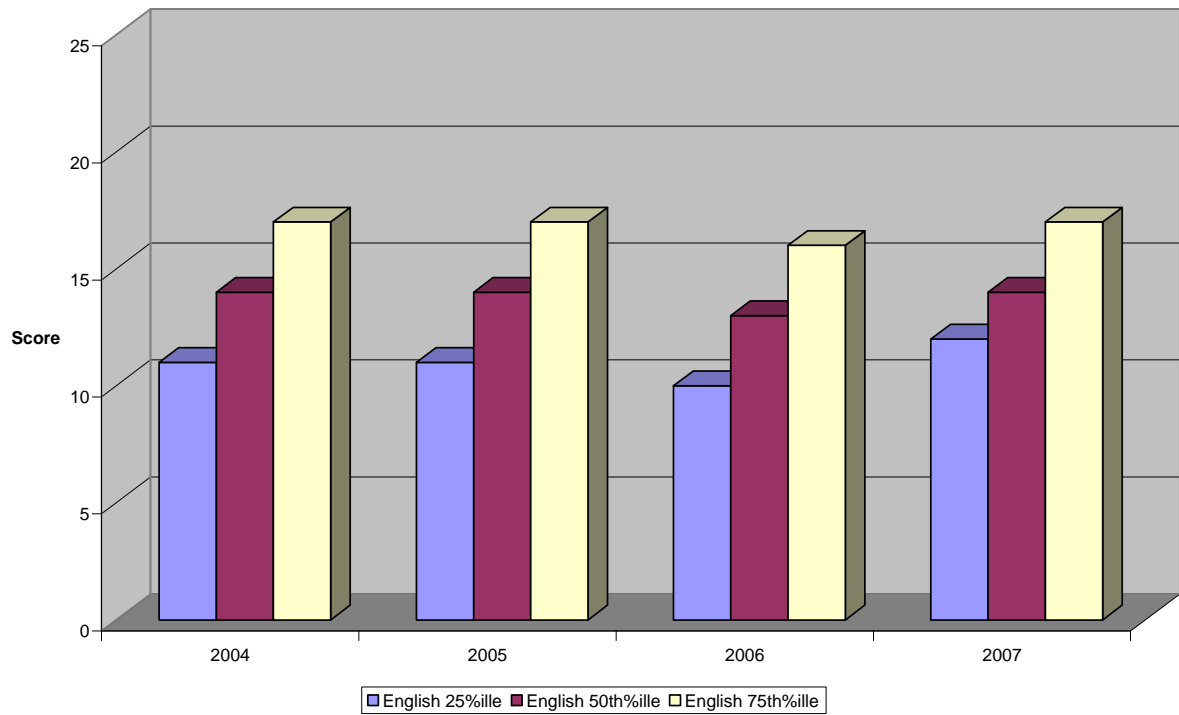


Chart 7

ACT Reading Score for New Freshmen

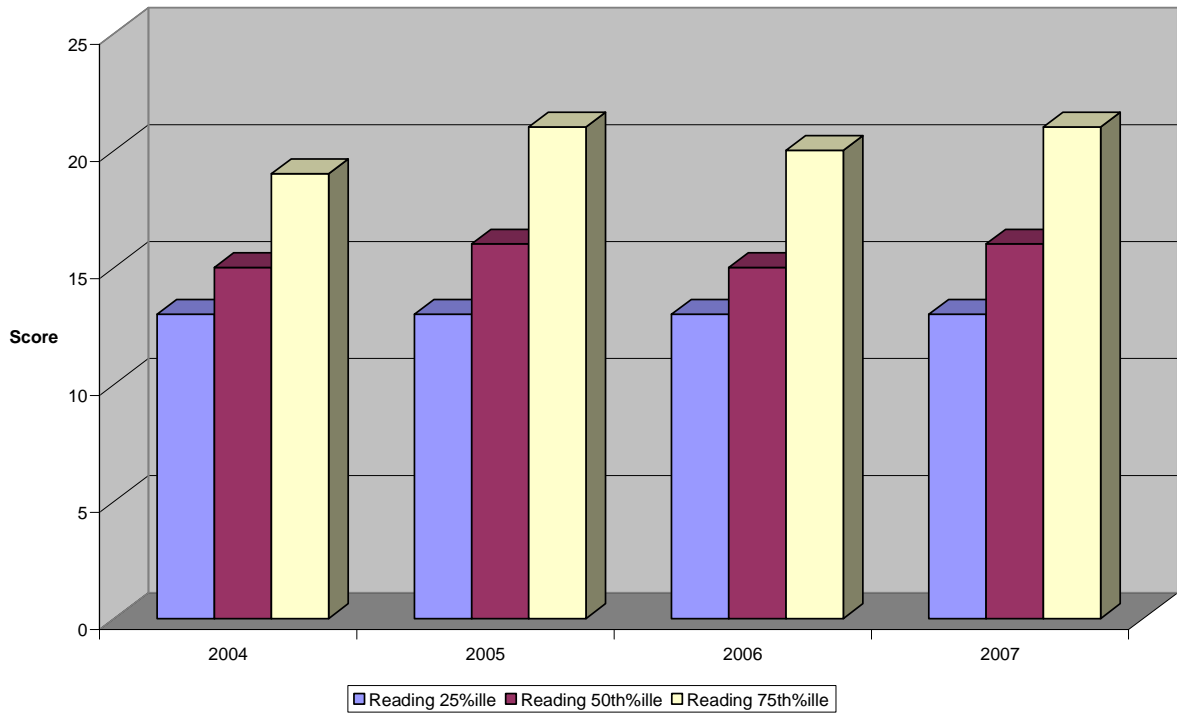


Chart 8

ACT Mathematics Score for New Freshmen

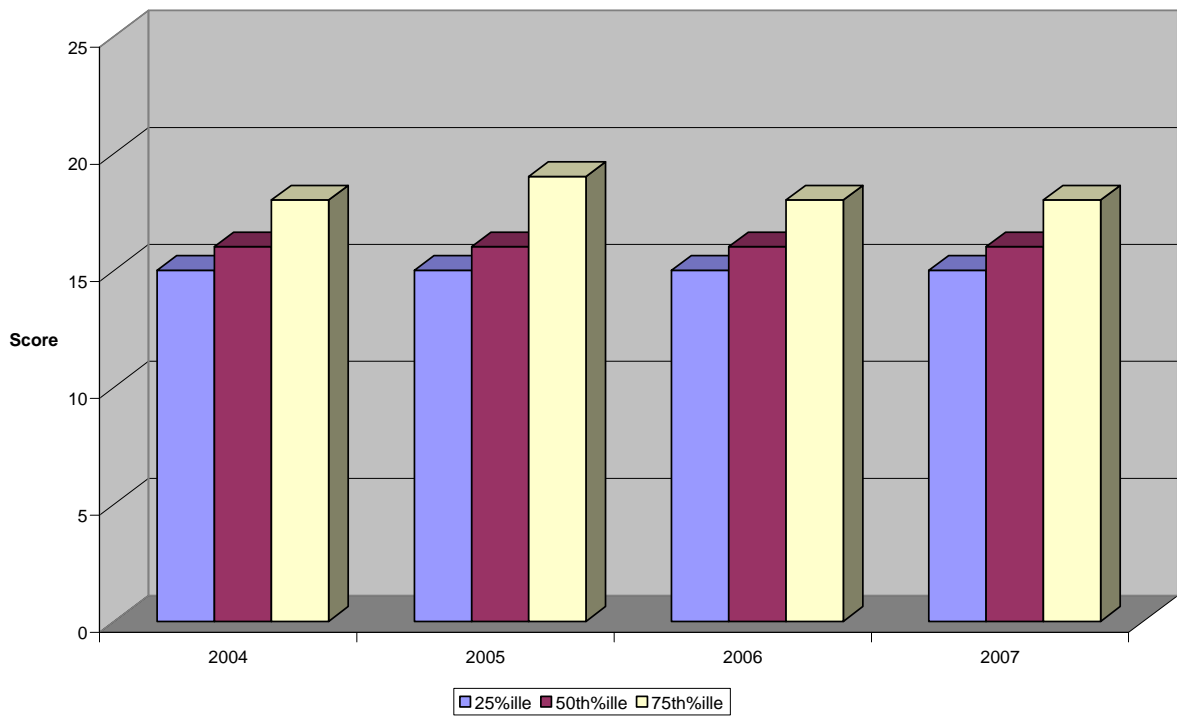


Chart 9

Student Hearing Status by Degree Program

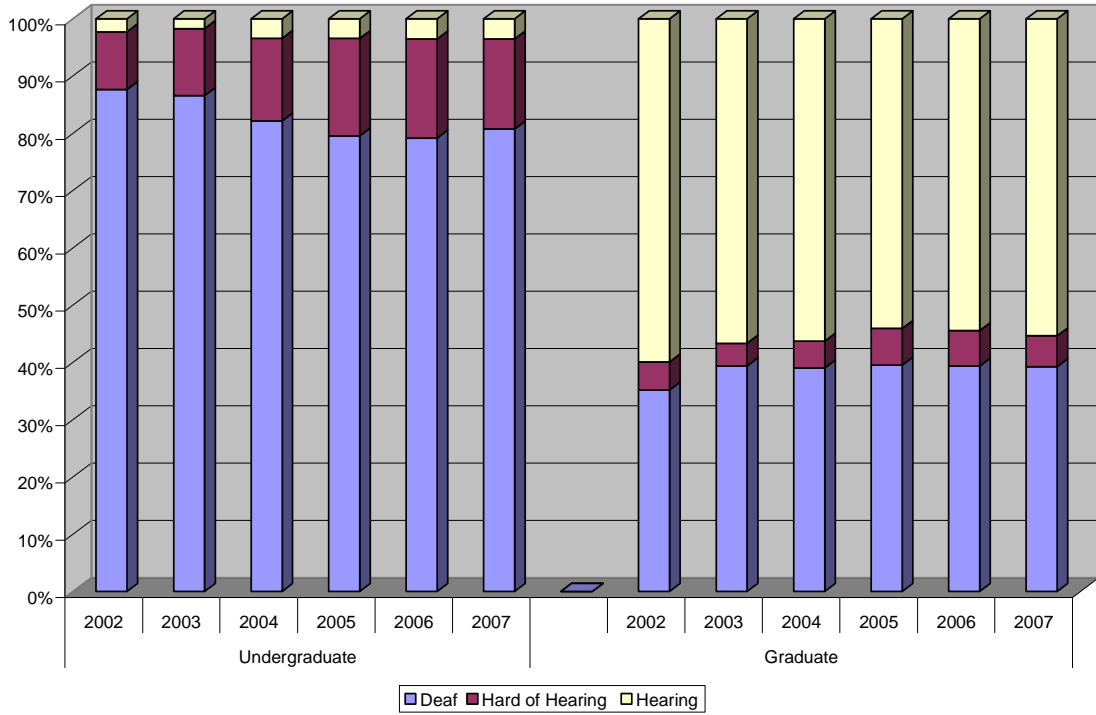


Chart 10

Undergraduate Self-Rated Signing Skill

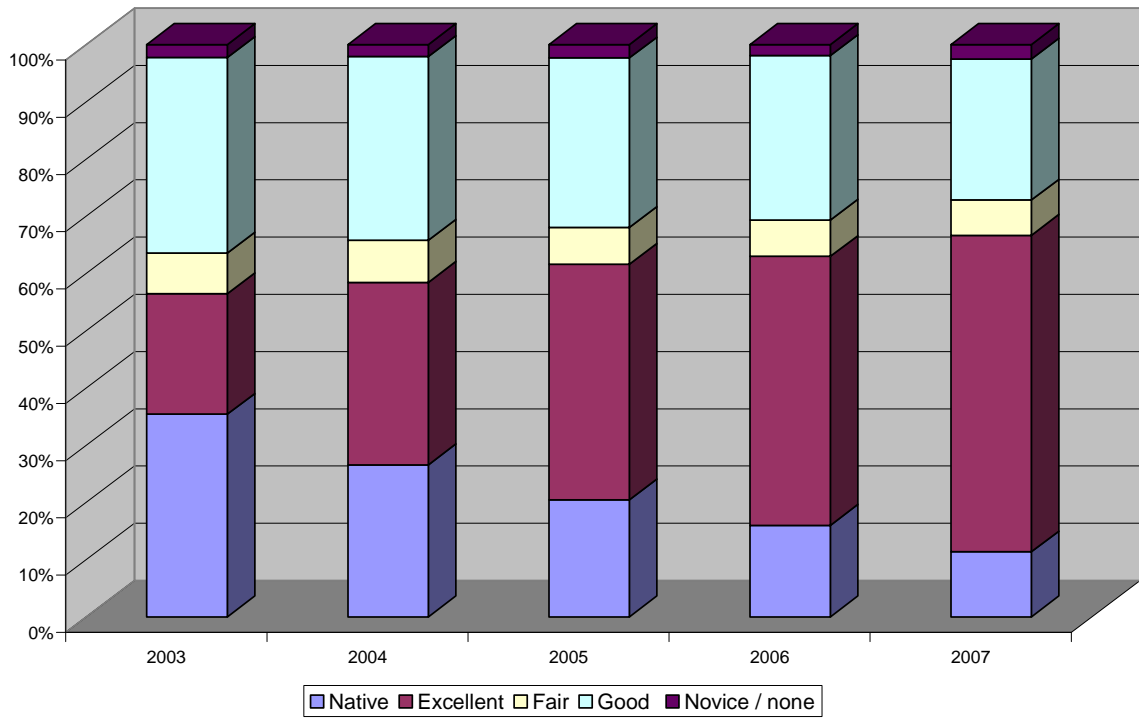


Chart 11

Total University Enrollment

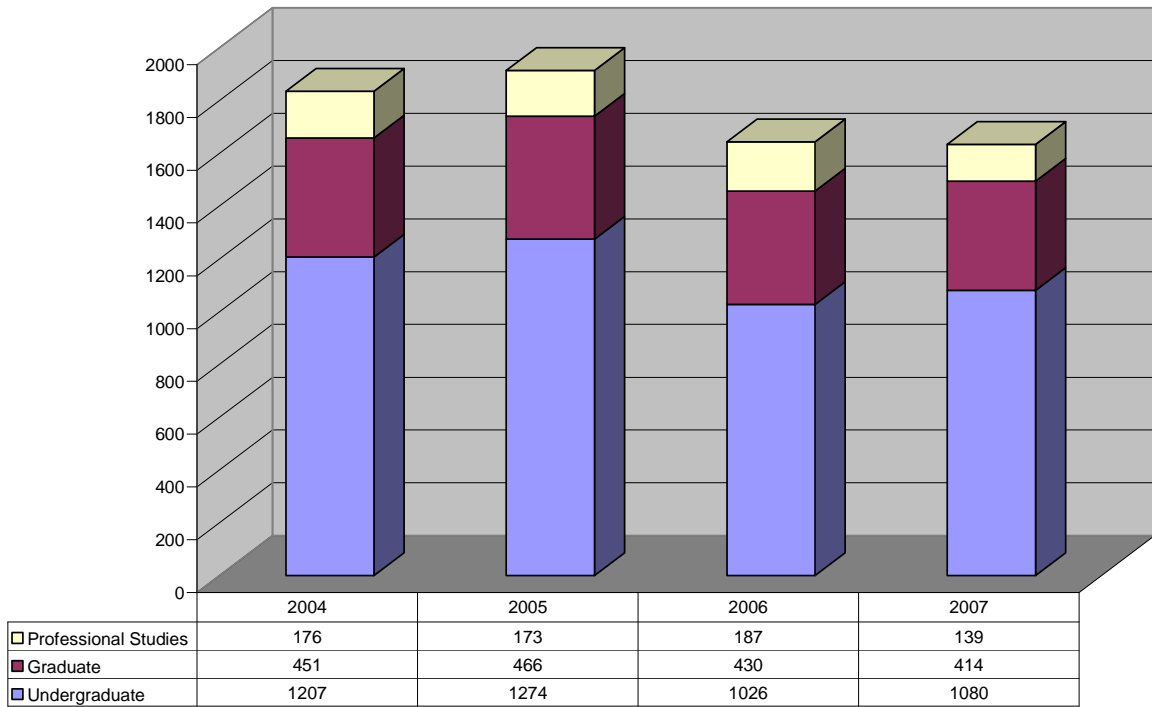


Chart 12

University Enrollment by Gender

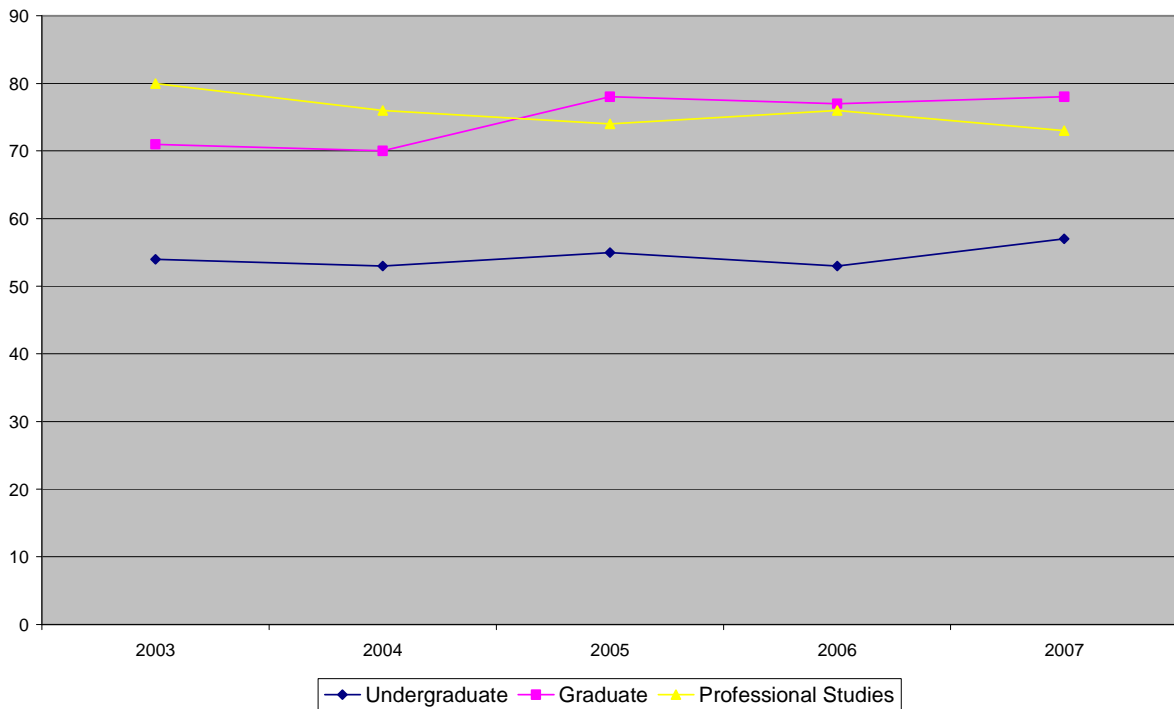


Chart 13

Undergraduate Enrollment by Ethnicity

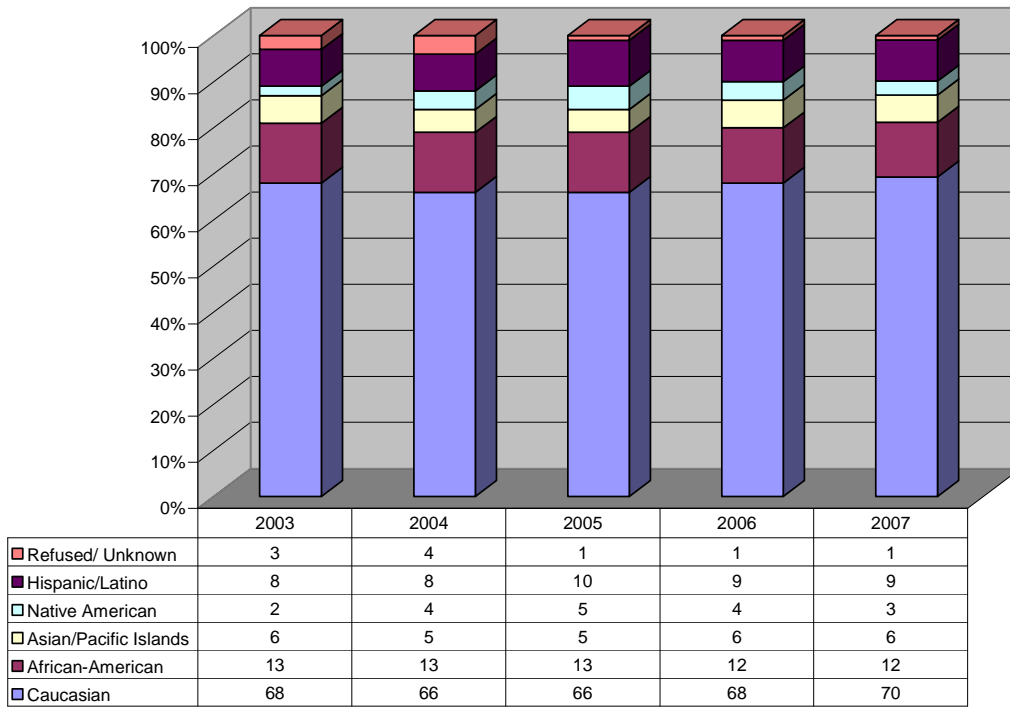


Chart 14

Graduate Enrollment by Ethnicity

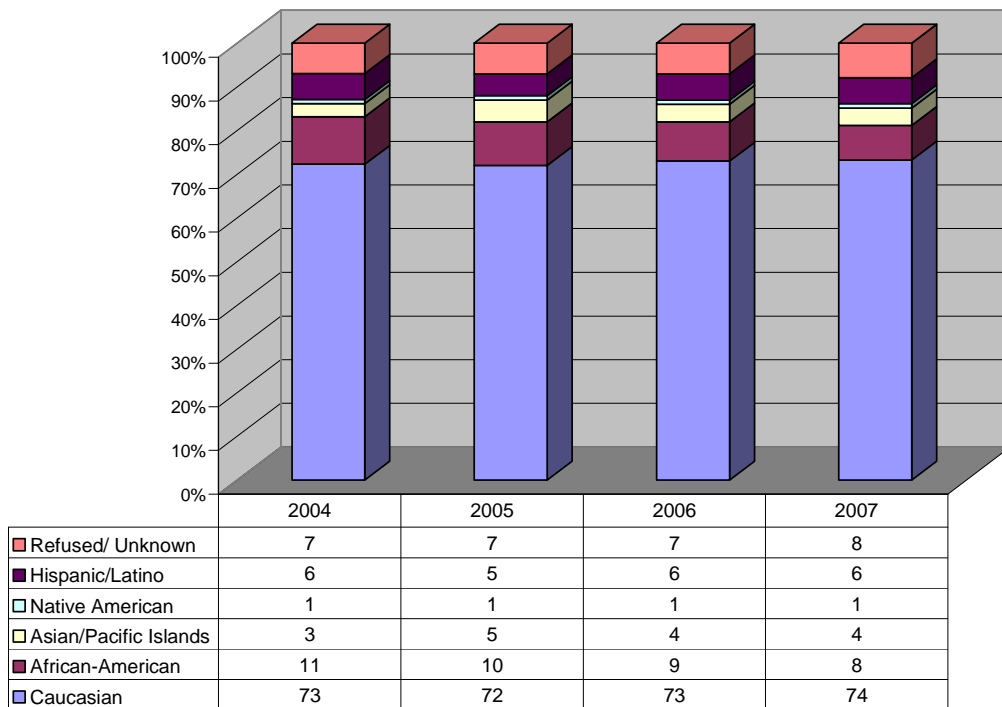


Chart 15
Degree Seeking Undergraduates by State in Order of Population

	2003	2004	2005	2006	2007
California	103	107	113	104	
Texas	52	52	47	45	
New York	72	74	76	75	
Florida	47	50	54	54	
Illinois	40	36	48	49	
Pennsylvania	47	51	55	50	
Ohio	33	35	38	32	
Michigan	19	20	27	23	
Georgia	14	19	21	24	
North Carolina	17	14	14	16	
New Jersey	30	26	35	35	
Virginia	47	42	41	36	
Washington	24	21	21	11	
Massachusetts	22	26	25	30	
Indiana	26	24	32	27	
Arizona	27	23	25	29	
Tennessee	14	11	13	11	
Missouri	17	15	13	13	
Maryland	102	94	105	103	
Wisconsin	21	27	21	13	
Minnesota	19	24	33	21	
Colorado	13	12	9	6	
Alabama	11	5	5	5	
South Carolina	11	13	14	11	
Louisiana	12	14	13	8	
Kentucky	12	10	9	8	
Puerto Rico	0	0	0	0	
Oregon	9	10	10	9	
Oklahoma	3	3	1	6	
Connecticut	15	15	12	14	
Iowa	7	8	7	5	
Mississippi	3	1	2	2	
Arkansas	1	1	4	4	
Kansas	14	7	12	11	
Utah	4	3	3	4	
Nevada	4	3	1	1	
New Mexico	7	3	8	7	
West Virginia	4	6	3	3	
Nebraska	3	5	3	3	
Idaho	2	0	1	0	
Maine	2	0	1	2	
New Hampshire	2	2	1	2	
Hawaii	3	4	7	8	
Rhode Island	4	3	6	6	
Montana	1	1	1	1	
Delaware	4	6	8	5	
South Dakota	6	6	5	5	
Alaska	1	4	2	2	
North Dakota	2	1	1	1	

Vermont	1	1	2	2
DC	43	47	66	66
Wyoming	2	0	0	38
Guam	1	0	0	0

Chart 16
Degree Seeking Graduate Students by State

	2003	2004	2005	2006
Alabama	1	1	4	2
Alaska	3	3	2	1
Arizona	3	4	5	10
Arkansas	0	0	1	2
California	17	25	29	29
Colorado	1	0	2	3
Conneticut	4	1	1	4
Delaware	1	2	1	0
DC	41	41	45	37
Florida	18	23	17	16
Georgia	3	2	3	2
Guam	0	0	0	0
Hawaii	1	2	0	0
Idaho	1	1	0	0
Illinois	8	10	8	7
Indiana	6	6	4	2
Iowa	2	3	7	4
Kansas	2	4	5	1
Kentucky	4	4	0	2
Louisiana	1	0	0	2
Maine	0	0	0	0
Maryland	78	75	77	71
Massachusetts	15	14	11	10
Michigan	8	1	2	5
Minnesota	6	6	6	8
Mississippi	1	1	0	0
Missouri	6	5	0	4
Montana	1	0	0	0
Nebraska	0	0	2	0
Nevada	0	0	3	3
New Hampshire	2	0	1	2
New Jersey	10	7	10	9
New Mexico	2	6	4	1
New York	18	24	27	19
North Carolina	4	6	6	4
North Dakota	0	0	0	0
Ohio	8	10	5	9
Oklahoma	1	1	0	0
Oregon	1	1	4	3
Pennsylvania	19	22	18	19
Puerto Rico	0	1	1	1
Rhode Island	0	4	2	1
South Carolina	1	1	0	1
South Dakota	0	1	2	1
Tennessee	1	0	0	4
Texas	7	10	13	8
Utah	4	2	1	0
Vermont	0	0	2	0
Virginia	52	47	38	47
Washington	3	6	6	6
West Virginia	2	1	0	1

Wisconsin	6	7	7	5
Wyoming	0	0	0	0

Chart 17
Degree Seeking International Students by Size of Cohort

	Undergraduate			Graduate		
	2004	2005	2006	2004	2005	2006
Canada	53	46	40	5	6	3
Japan	2	0	6	2	0	1
Nigeria	4	5	5	1	1	2
China	6	5	4	0	1	0
India	4	5	3	0	0	0
Chile	2	2	2	0	0	0
South Korea	3	4	2	0	1	2
Philippines	2	2	2	1	1	0
Saudi Arabia	2	2	2	0	0	0
Sweden	3	3	2	0	0	0
Barbados	1	1	1	0	0	0
Botswana	2	0	1	0	0	0
Gabon	0	1	1	0	0	1
Ireland	1	1	1	1	1	0
Israel	1	0	1	1	0	0
Jamaica	0	1	1	0	0	0
Netherlands	3	2	1	0	0	0
Norway	0	1	1	0	0	0
South Africa	1	1	1	0	0	0
Switzerland	0	0	1	0	0	0
Taiwan	1	2	1	0	0	0
Argentina	1	0	0	1	1	1
Belarus	1	0	0	0	0	0
Cameroon	0	0	0	1	0	0
Congo	1	1	0	0	0	0
Denmark	0	0	0	0	1	0
Germany	0	0	0	1	0	0
Great Britain	1	1	0	0	0	0
Greece	0	0	0	0	1	0
Italy	0	0	0	0	0	1
Kenya	1	0	0	1	2	0
Kuwait	1	1	0	0	0	0
Lebanon	1	1	0	0	0	0
Mexico	0	0	0	1	1	1
Rwanda	1	1	0	0	0	0
Slovakia	1	0	0	0	0	0
Spain	2	1	0	0	0	0
Thailand	1	0	0	1	1	1
United Arab Emirates	0	3	0	0	0	0
Unknown	22	18	14	4	6	7

Program Characteristics

Chart 18
Graduate Program Enrollment by Degree

		2004	2005	2006	2007	
Doctoral	Administration: Special Education	27	27	20	21	
	HSLs: Au.D.	34	33	38	38	
	HSLs: Ph.D.	*	6	8	9	
	Education	13	20	20	16	
	Linguistics	14	18	16	14	
	Psychology: Clinical	34	32	34	38	
Master's	Administration	12	12	7	5	
	Counseling: Mental Health	24	20	17	13	
	Counseling: School	27	24	25	23	
	Deaf Education: ASL/ English Bilingual	*	6	9	11	
	Deaf Studies	21	24	27	21	
	Developmental Psychology	11	17	6		
	Education: Advance Studies	0	1	0	1	
	Education: Elementary	12	16	6	11	
	Education: Family-Child Centered	15	10	13	7	
	Education: Multiple Disabilities	17	21	9	5	
	Education Secondary	4	10	10	7	
	Education: Special Programs	5	7	5	6	
	International Development	*	*	8	15	
	Interpretation	17	10	13	19	
	Leisure Services	8	6	6	3	
	Linguistics	19	17	11	10	
	Social Work	31	37	41	39	
	Speech-Language Pathology	25	24	23	23	
	Specialist	Administration & Supervision	0	0	0	0
		Change Leadership in Education	*	14	14	7
Deaf Education		0	1	1	0	
School Psychology		19	21	16	16	
Certificate	Deaf History	1	4	3	1	
	International Development	15	16	11	4	
	Leadership	3	0	0	0	
	Management	3	2	6	0	

*Program not begun

Chart 19
Average Class Size by Department, Fall Semester

	2003	2004	2005	2006	2007
Accounting (ACC)	9.8	8.9	9.5	9	8.1
Admiistration (ADM)	5	3.6	4.9	3.9	3.9
American Sign Language (ASL)	5.5	8.3	9.4	9	9.5
ASL (Grad)	5.6	5	7	5.1	2.7
Applied Literacy (ALT)				8.8	7.6
Art (ART)	8.8	9.2	7.7	9.5	7.5
Biology (BIO)	12.3	13.6	12.8	13.6	12.7
Business Administration (BUS)	15.8	10.4	14.9	16.7	14.8
Chemistry (CHE)	7.9	6.5	11.3	6.8	6.1
Cntr for Acad Prgm & Stdnt Ser (CAP)	10.2	7.6	10.1	9.4	1.8
Communication Studies (COM)	12.1	12.8	13.3	11.4	11.8
Computer Information Science (CIS)	9.3	7.6	7.2	5.4	6.8
Computer Science (CSC)	5.4	4.8	5.8	4.3	3
Counseling (COU)	28	27	47	22	5
COU (Grad)	5.6	9.2	7.7	7	6.1
Deaf Studies (DST)	13.3	15.7	11.3	13.4	11.8
DST (Grad)			8	6.3	5.7
Economics & Finance (ECO)	10.8	17.9	7.4	12.4	8.3
Edu Foundation & Research (EDF)	11	8.5	12	8	9
EDF (Grad)	8.3	9.9	7.6	10.6	8.1
Education (EDU)	7.8	6.1	9.9	10.1	8.9
EDU (Grad)	5.1	7.7	2.8	5.5	6
English (ENG)	11.9	12.1	12.9	11.1	11.8
Family and Child Studies (FCS)	9.7	9.3	12	10.9	6.8
Foreign Lang, Lit & Culture (FLC)	5	7.7	3.3	5.5	6
French (FRE)	10.4	12.3	16.3	10.4	8
General Studies requirements (GSR)					13.6
German (GER)	7.3	5.3	19	11.6	13.7
Government (GOV)	11.8	10.5	10.8	12.5	8.1
GOV (Grad)	6	8	7	12	10
Hearing, Speech & Language Sci (HSL)	7	10	9.8	10.5	8
HSLS (Grad)	9.3	6.9	8	6.7	7.7
History (HIS)	14.1	12.9	14.2	12.5	13
HIS (Grad)	1.5	0.5	3	3.3	3.5
Honors Program (HON)	4	1.3	5.1	5.5	1.3
Interpretation (INT)			8	5	5.6
INT (Grad)	6.1	5.9	5	5.2	9.1
Italian (ITA)		16	17	13	
Latin (LAT)	15	6.8	9.5	12.2	10
Linguistics (LIN)	14.8	14.7	9.1	12	12.7
LIN (Grad)	6.3	4.8	4.6	2.9	2.2
Mathematics (MAT)	14.4	13.9	16.2	14.6	11.9
Philosophy (PHI)	11.3	13.5	13.5	12.9	12.8
Physical Education (PED)	9.7	11	11.5	10.8	9.5
Physics (PHY)	9.5	7.4	9.7	10.3	10.4
Psychology (PSY)	10.3	10.4	12.6	13.7	13.2
PSY (Grad)	4.4	4.9	4.6	4.2	4.4
Recreation (REC)	4.8	3.4	6	4.4	3.8
REC (Grad)	1.7	1	2	1.4	2.5

Religion (REL)	7	3.8	10	8.5	3.3
Social Work (SWK)	11.4	7.8	10.9	12.1	9.9
SWK (Grad)	7.4	8.5	10.2	9.3	13.9
Sociology (SOC)	12.1	13.2	16.8	13.2	13.7
Spanish (SPA)	11	7.8	12.6	13.1	11.2
Theatre Arts (THE)	11.5	9.2	10.5	7.9	7.2
Women's Studies (WMS)			1	8	5
Undergraduate Average	10.6	10.1	11.4	11	9.8
Graduate Average	5.8	6.1	5.1	5.5	5.8

Retention & Program Completion

Chart 20

First Time Freshman Cohort Retention

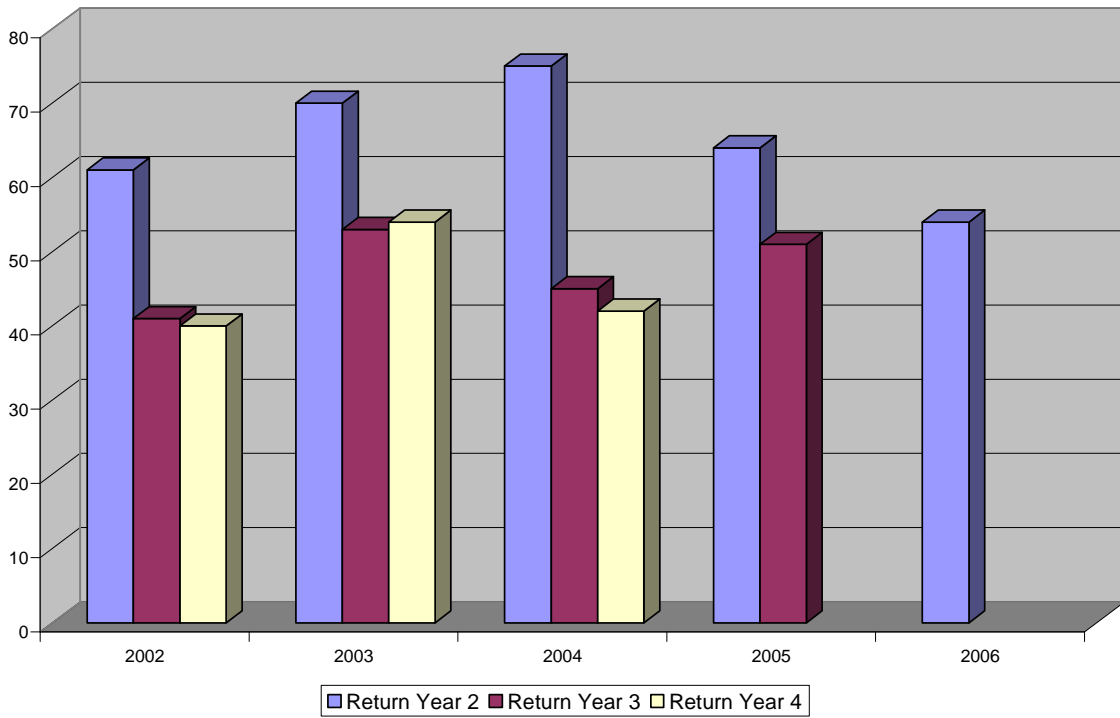
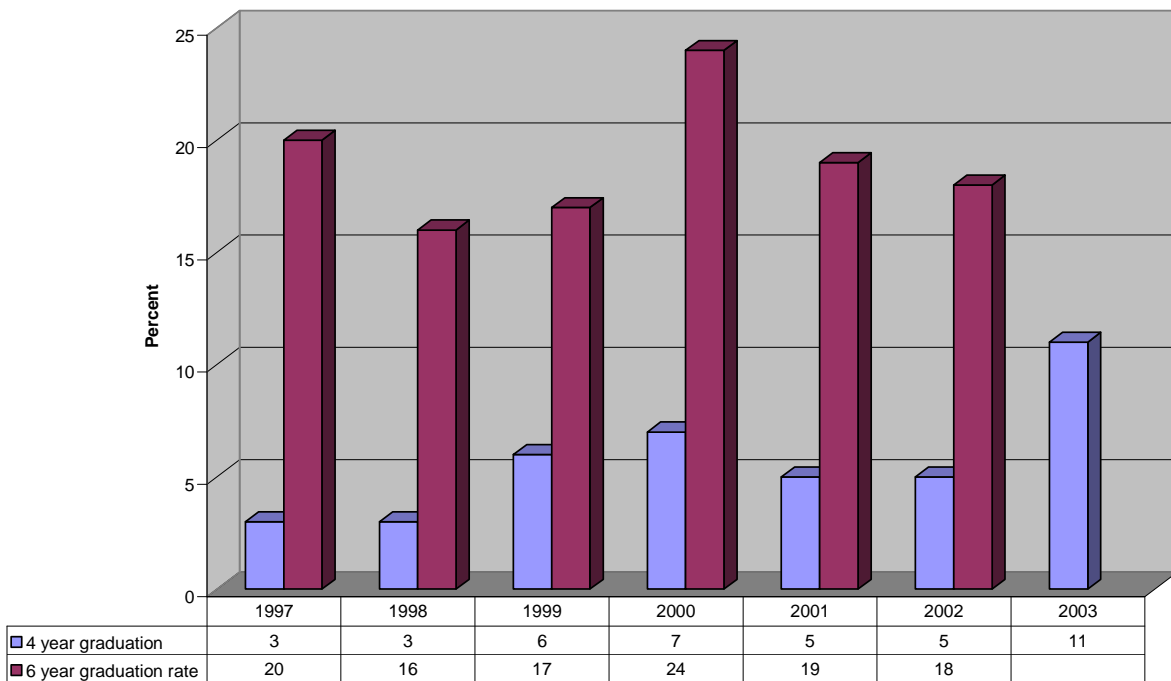


Chart 21

First Time Freshman Cohort Graduation Rate



**Chart 22
Graduate Degree Programs Years to Complete**

		2003	2004	2005	2006	2007
Doctoral	Administration: Special Education	6.5	7.8	5	10	
	HSLs: Au.D.	3	3.1	3.7	4	4
	HSLs: Ph.D.			5		
	Education	13.5	6	5	6.3	
	Linguistics		3	5		
Master's	Psychology: Clinical	5.7	5.8	5	5	6
	Administration	2.3	2.1	1.2	2.3	2
	Audiology			2	4	2.5
	Counseling: Mental Health	1.6	1.8	1.2	2	
	Counseling: School	1.9	2.1	1.3	1.7	2.5
	Deaf Education: ASL/ English Bilingual				1	1
	Deaf Studies	1.8	1.4	1.4	1.3	
	Developmental Psychology	0	0	0.3	0	
	Education: Advance Studies	1	0.5	5		
	Education: Elementary	1.2	1.4	1.3	1	
	Education: Family-Child Centered	2.6	2	4	3.4	
	Education: Multiple Disabilities	1.5	1.5	1.4		
	Education Secondary		1	2	1	
	Education: Special Programs	2.4	2.8	2.3	1.8	2
	Interpretation	2.1	2	1.8	2	
	Leisure Services	2.7	2	2	1.3	
	Linguistics	1	1	1.7	1.2	
	Psychology	3	3.8	4	3.6	3.5
	Social Work	2.3	1.3	1.5	1.5	
	Speech-Language Pathology	1.3	1.2	1	1	
Specialist	Administration & Supervision		0.8	1		
	Change Leadership in Education					
	Deaf Education		6	4	5	
Certificate	School Psychology	2.2	3	2	2	2.2
	Deaf History			6	2	
	International Development		3.5			
	Leadership Management	2.5		1.5		