

**Fall Enrollment Report**  
**AY0809**



**Office of Institutional Research**  
**September, 2008**

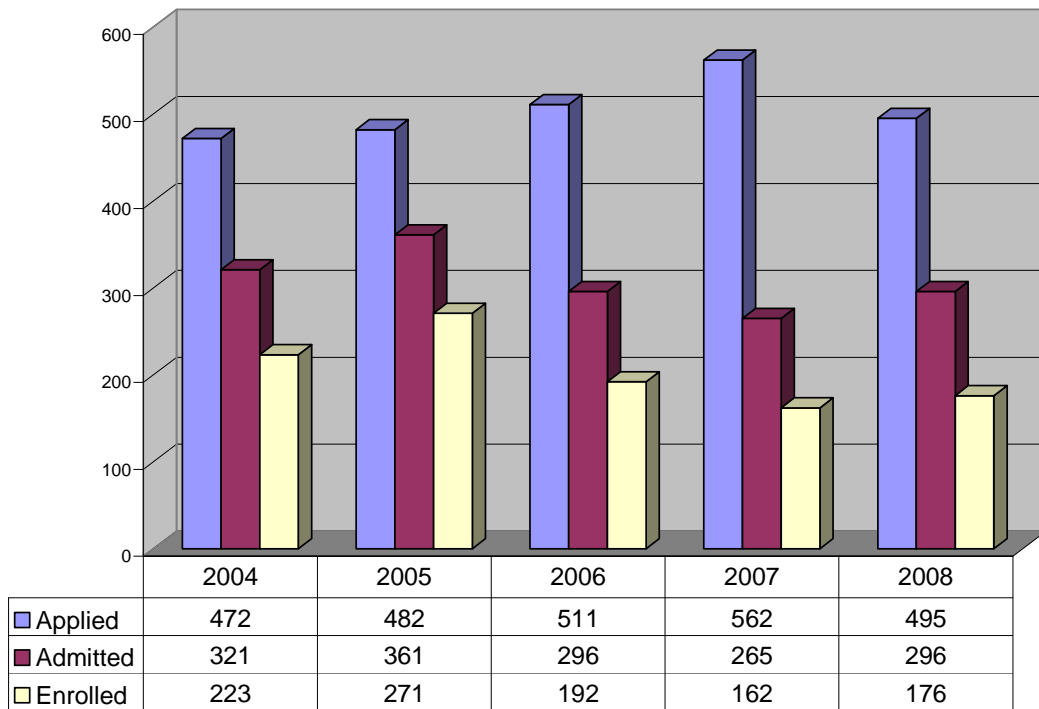
## Table of Contents

	Page
<b>Chart</b>	<b>Student Body Profiles</b>
<b>1</b>	Freshman applications, admissions, and enrollments 3
<b>2</b>	New Graduate applications, admissions, and enrollments 3
<b>3</b>	Freshmen by Gender and Traditionally Underrepresented Groups 4
<b>4</b>	New Graduate Students by Gender and Traditionally Underrepresented Groups 4
<b>5</b>	ACT English Scores for New Freshman 5
<b>6</b>	ACT Reading Scores for New Freshman 5
<b>7</b>	ACT Mathematics Scores for New Freshman 6
<b>8</b>	Undergraduate Hearing Status 6
<b>9</b>	Graduate Hearing Status 7
<b>10</b>	Total University Enrollment 7
<b>11</b>	University Enrollment by Gender 8
<b>12</b>	Undergraduate enrollment by ethnicity 8
<b>13</b>	Graduate enrollment by ethnicity 9
<b>14</b>	Degree-seeking Undergraduates by State, District or Territory 10
<b>15</b>	Degree-seeking Graduate Students by State, District or Territory 11
<b>16</b>	Degree-seeking International Students by Country of Origin 12
	<b>Program Characteristics</b>
<b>17</b>	Graduate Degree Program Enrollment by Discipline 14
<b>18</b>	Average class size by department, fall semester 15
	<b>Retention &amp; Program Completion</b>
<b>19</b>	First time freshmen cohort retention 18
<b>20</b>	First time freshmen cohort graduation rate 18
	<b>Special Populations</b>
<b>21</b>	Freshman applications by ethnic group 20
<b>22</b>	Freshman admissions per applications by year 20
<b>23</b>	Freshman enrollments per applications by year 21
<b>24</b>	African American retention by year 21
<b>25</b>	Asian American retention by year 22
<b>26</b>	Hispanic retention by year 22
<b>27</b>	Six year graduation rate by ethnic group 23

## **Student Body Profiles**

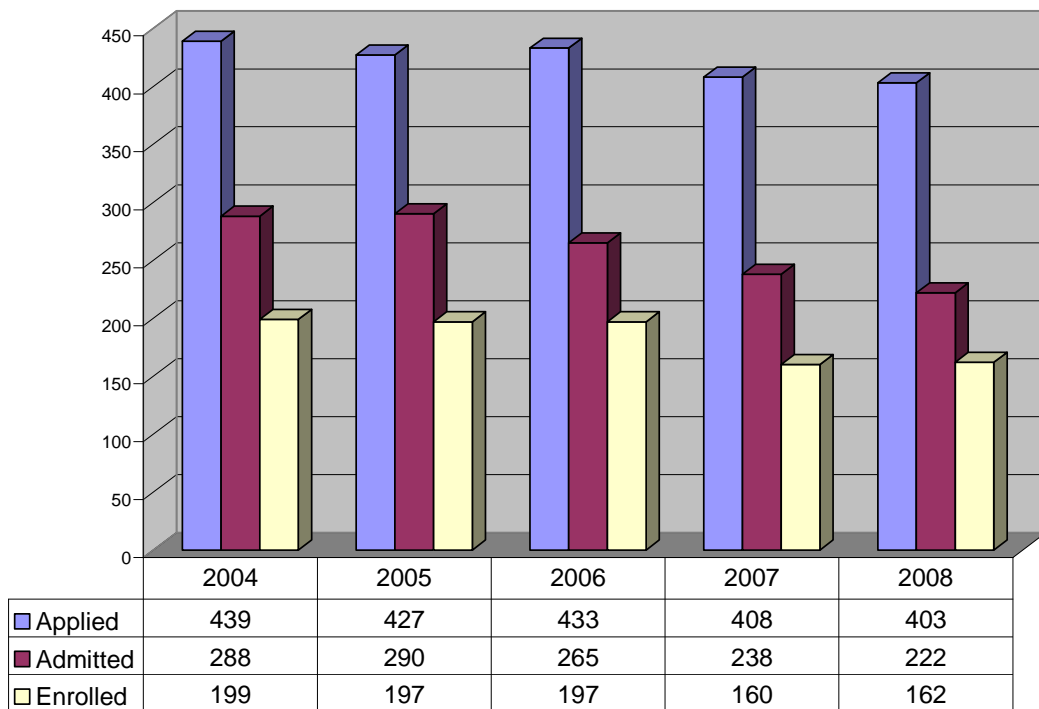
**Chart 1**

**First Time Freshmen Applications, Admissions, Enrollments**



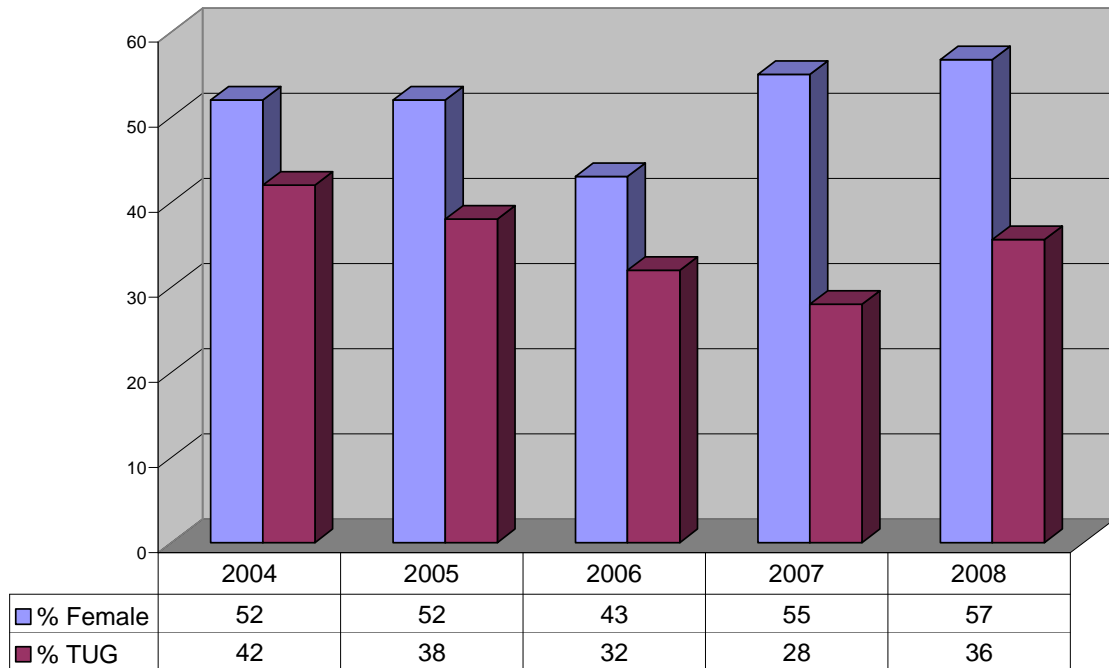
**Chart 2**

**Graduate Applications, Admissions, Enrollments**



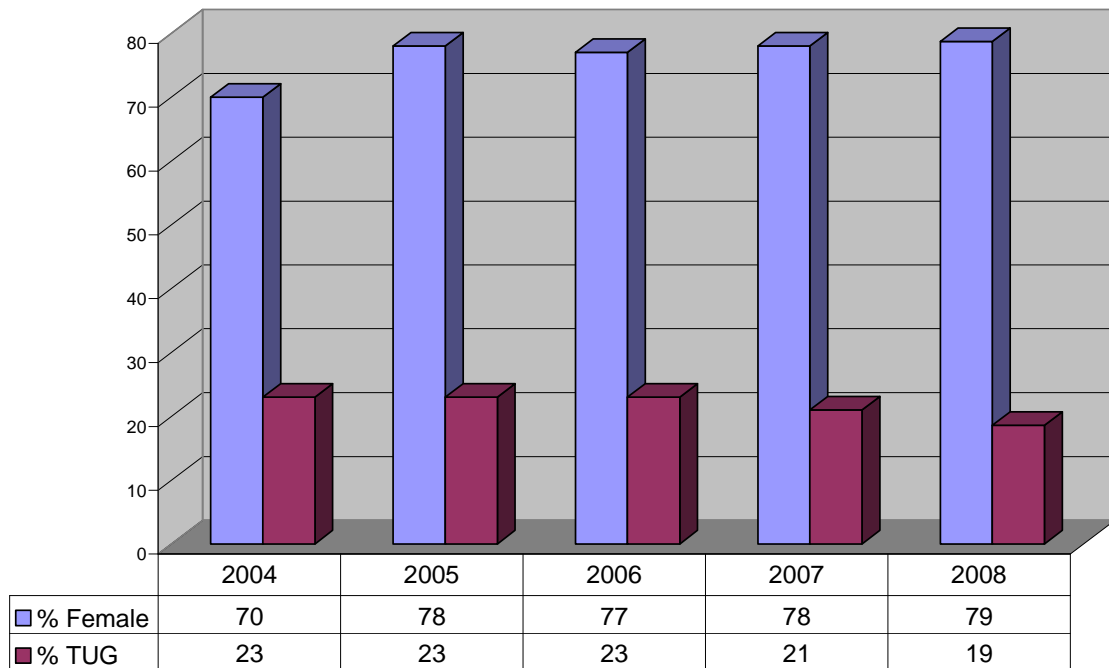
**Chart 3**

**Freshmen by Gender and Traditionally Underrepresented Groups**



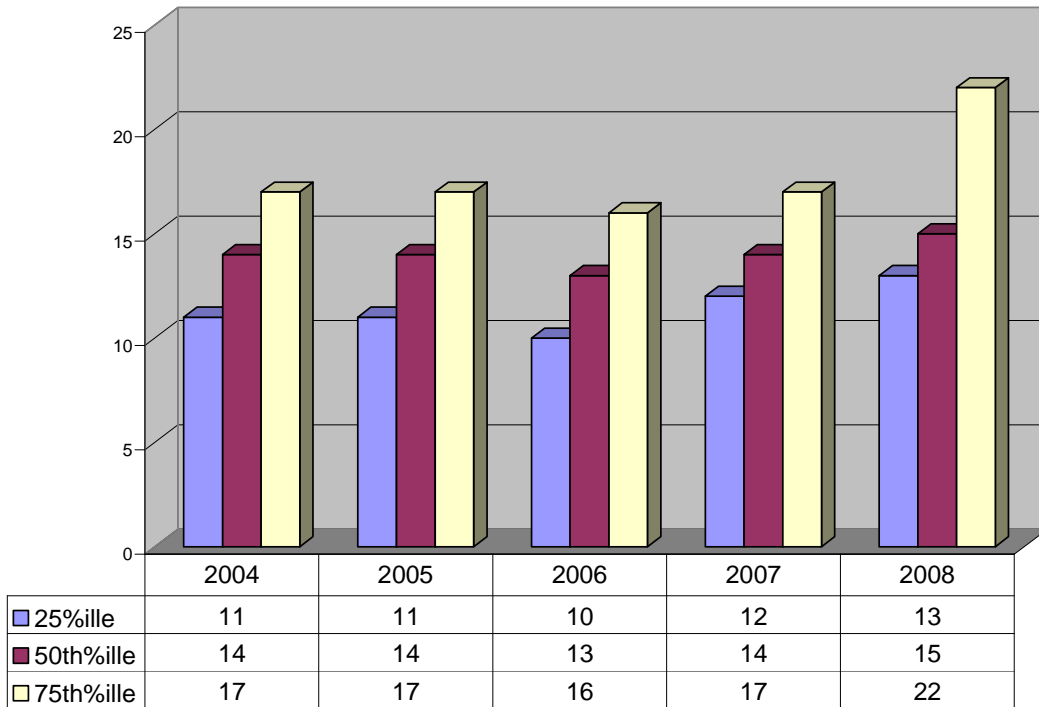
**Chart 4**

**New Graduate Students by Gender and Traditionally Underrepresented Groups**



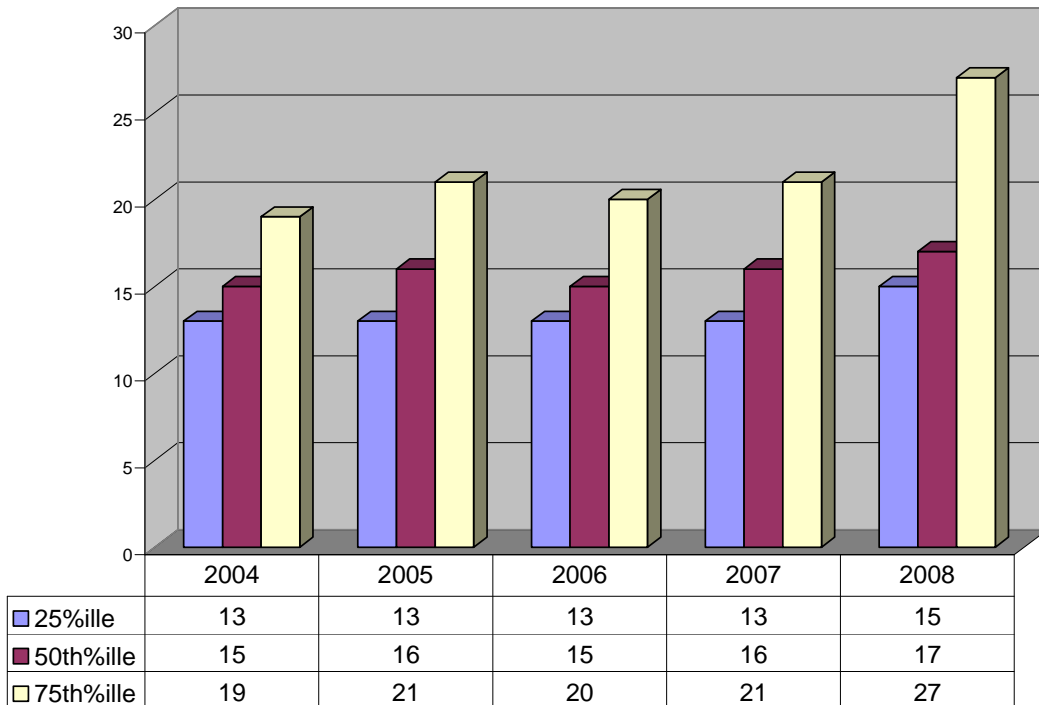
**Chart 5**

**Freshmen English ACT Scores**



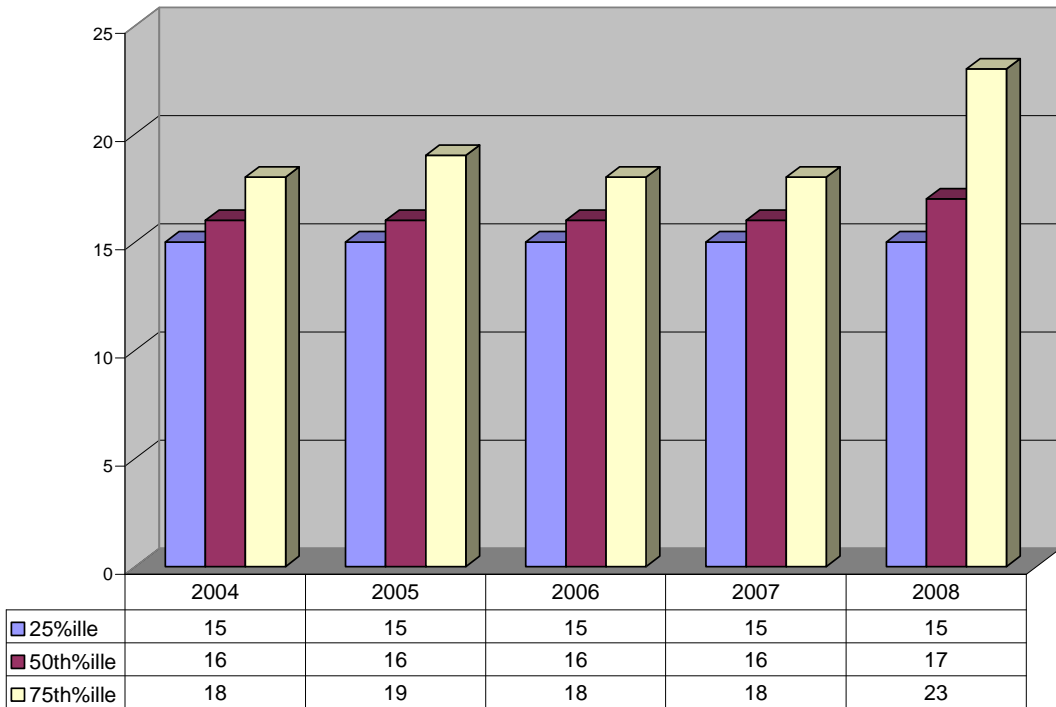
**Chart 6**

**Freshmen Reading ACT Scores**



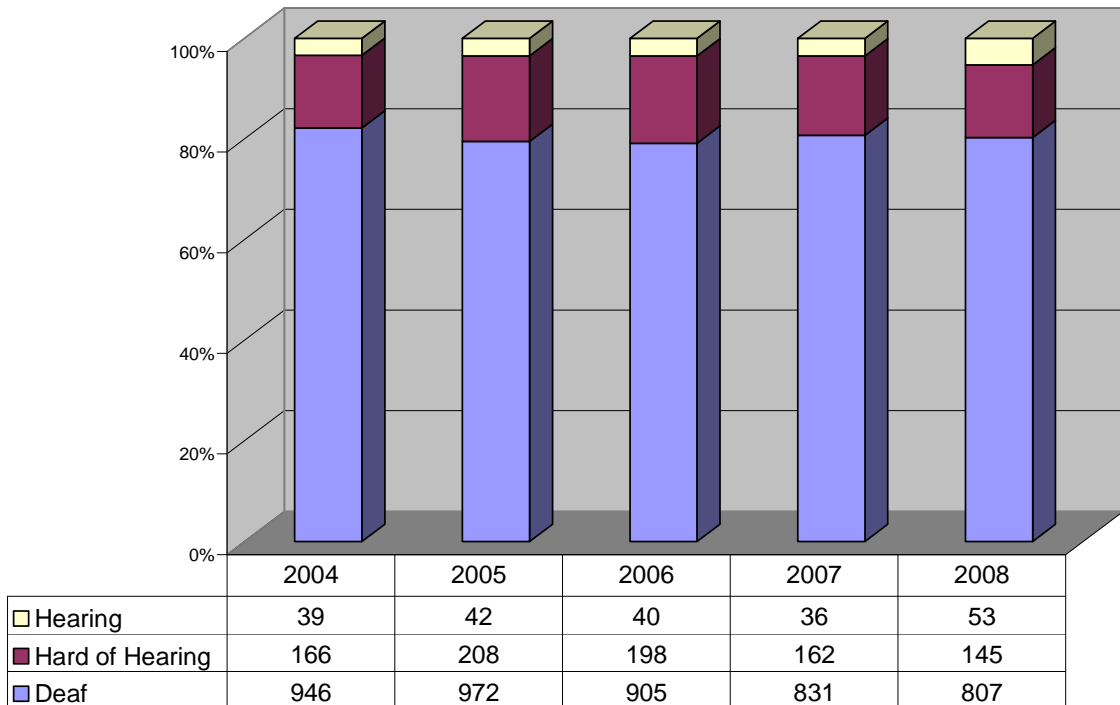
**Chart 7**

**Freshmen Mathematics ACT Scores**



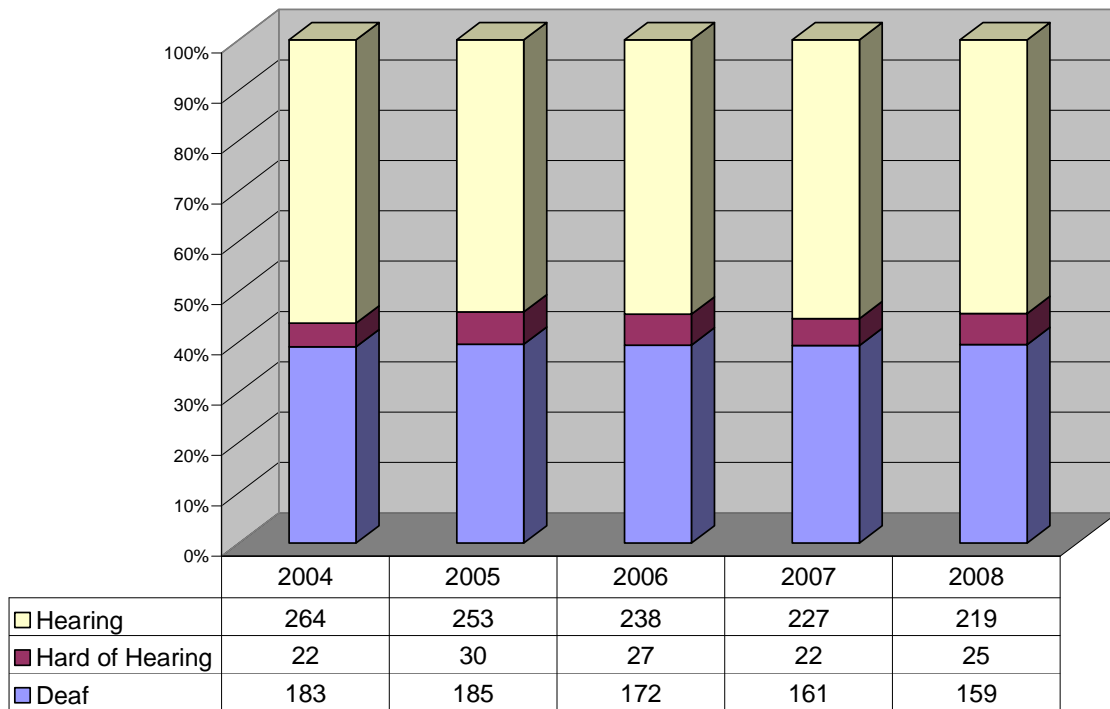
**Chart 8**

**Undergraduate Hearing Status**



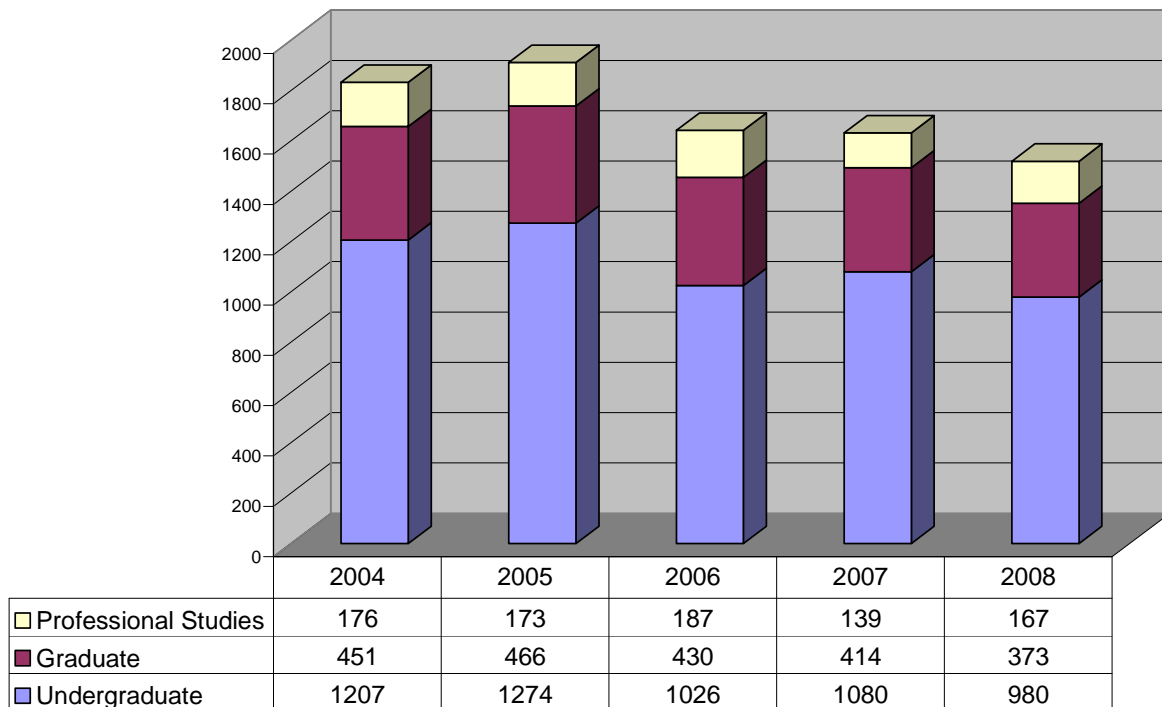
**Chart 9**

**Graduate Student Hearing Status**



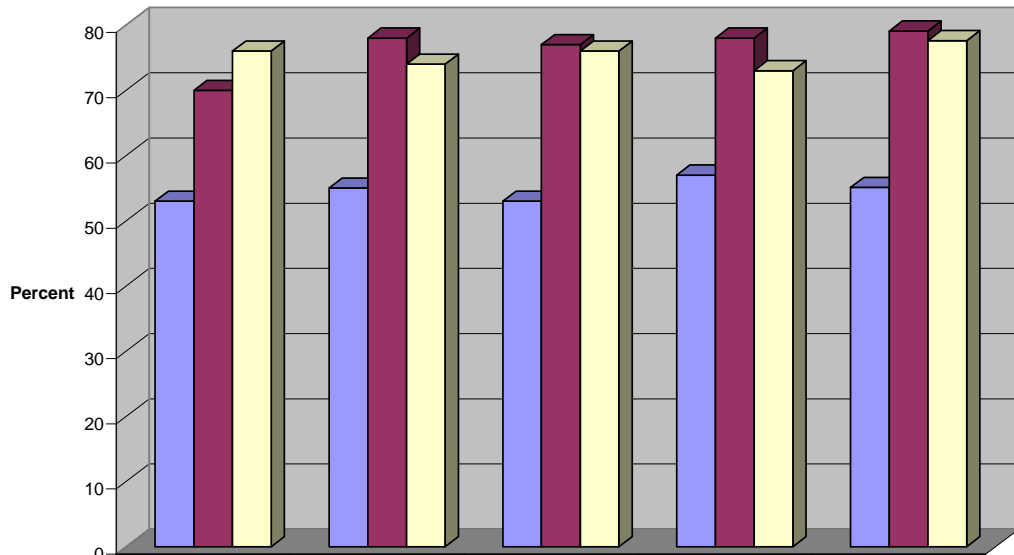
**Chart 10**

**Total University Enrollment**



**Chart 11**

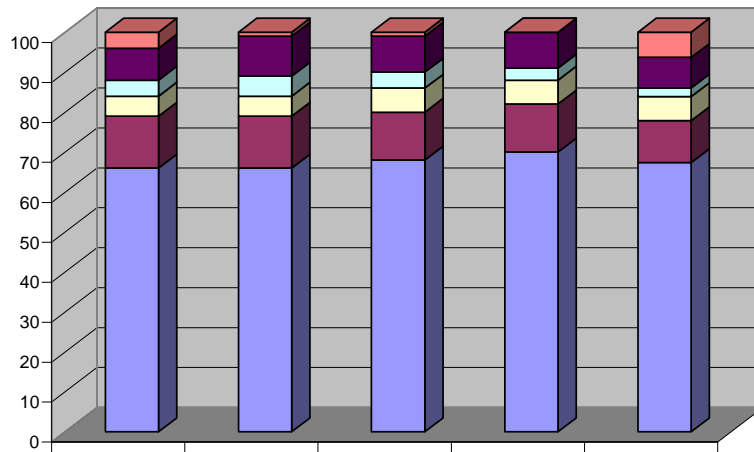
**University Enrollment by Percent Female**



	2004	2005	2006	2007	2008
Undergraduate	53	55	53	57	55
Graduate	70	78	77	78	79
Professional Studies	76	74	76	73	78

**Chart 12**

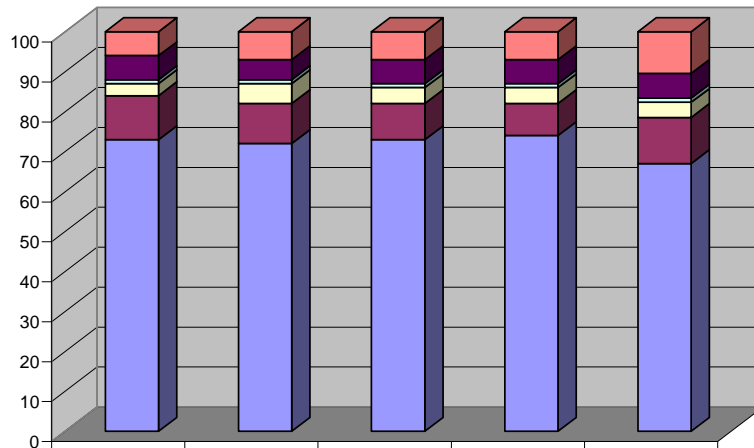
**Undergraduate Enrollment by Ethnicity**



	2004	2005	2006	2007	2008
Refused/ Unknown	4	1	1	1	6
Hispanic/Latino	8	10	9	9	8
Native American	4	5	4	3	2
Asian/Pacific Islands	5	5	6	6	6
African-American	13	13	12	12	11
Caucasian	66	66	68	70	67

**Chart 13**

**Graduate Enrollment by Ethnicity**



	2004	2005	2006	2007	2008
Refused/ Unknown	7	7	7	8	10
Hispanic/Latino	6	5	6	6	6
Native American	1	1	1	1	1
Asian/Pacific Islands	3	5	4	4	4
African-American	11	10	9	8	12
Caucasian	73	72	73	74	67

**Chart 14**  
**Degree Seeking Undergraduates by State**

	<b>2004</b>	<b>2005</b>	<b>2006</b>	<b>2007</b>	<b>2008</b>
Alabama	5	5	5	3	4
Alaska	4	2	2	2	1
Arizona	23	25	29	24	17
Arkansas	1	4	4	5	8
California	107	113	104	99	83
Colorado	12	9	6	3	4
Conneticut	15	12	14	14	12
DC	47	66	66	61	53
Delaware	6	8	5	5	4
Florida	50	54	54	44	48
Georgia	19	21	24	21	25
Hawaii	4	7	8	7	10
Idaho	0	1	0	0	0
Illinois	36	48	27	53	43
Indiana	24	32	27	34	32
Iowa	8	7	5	5	5
Kansas	7	12	11	10	13
Kentucky	10	9	8	7	8
Louisiana	14	13	8	6	13
Maine	0	1	2	0	0
Maryland	94	105	103	92	105
Massachusetts	26	25	30	16	22
Michigan	20	27	23	28	26
Minnesota	24	33	21	23	28
Mississippi	1	2	2	3	2
Missouri	15	13	13	13	16
Montana	1	1	1	2	1
Nebraska	5	3	3	2	4
Nevada	3	1	1	0	1
New Hampshire	2	1	2	1	2
New Jersey	26	35	35	35	35
New Mexico	3	8	7	4	5
New York	74	76	75	58	50
North Carolina	14	14	16	12	9
North Dakota	1	1	1	1	1
Ohio	35	38	32	36	29
Oklahoma	3	1	6	1	1
Oregon	10	10	9	11	16
Pennsylvania	51	55	50	42	36
Rhode Island	3	6	6	4	5
South Carolina	13	14	11	6	6
South Dakota	6	5	5	2	1
Tennessee	11	13	11	10	13
Texas	52	47	45	48	48
Utah	3	3	4	5	4
Vermont	1	2	2		2
Virginia	42	41	36	38	42
Washington	21	21	11	10	9
West Virginia	6	3	3	1	3
Wisconsin	27	21	13	13	9

**Chart 15**  
**Degree Seeking Graduate Students by State**

	2004	2005	2006	2007	2008
Alaska	4	3	0	0	0
Alabama	3	8	3	0	0
Arkansas	0	3	6	10	3
Arizona	10	10	24	19	7
California	58	63	64	59	33
Colorado	0	8	7	10	4
Connecticut	2	3	9	4	1
DC	113	111	85	78	43
Delaware	3	3	0	1	0
Florida	50	36	37	50	13
Georgia	7	7	3	8	6
Hawaii	11	21	5	5	
Iowa	9	15	9	3	2
Idaho	2	2	0	0	0
Illinois	24	16	19	25	8
Indiana	12	9	8	4	4
Kansas	11	13	4	2	1
Kentucky	9	2	6	2	1
Louisiana	1	2	6	8	2
Massachusetts	34	28	25	21	12
Maryland	197	186	147	157	56
Maine	0	0	0	0	0
Michigan	4	5	11	13	8
Minnesota	14	18	18	10	7
Missouri	11	1	9	9	2
Mississippi	2	0	0	0	0
Montana	0	0	0	2	2
North Carolina	18	19	8	7	3
Nebraska	0	3	0	1	1
New Hampshire	0	3	5	4	1
New Jersey	18	24	20	15	6
New Mexico	14	7	6	3	2
Nevada	2	10	6	0	2
New York	57	64	49	47	25
Ohio	27	16	28	22	14
Oklahoma	2	0	0	0	0
Oregon	5	8	8	11	3
Pennsylvania	52	47	40	29	16
Puerto Rico	2	2	1	3	1
Rhode Island	9	3	1	0	0
South Carolina	1	0	1	5	0
South Dakota	3	6	2	0	0
Tennessee	6	5	9	3	3
Texas	28	26	20	24	11
Utah	5	3	1	4	3
Virginia	103	97	104	79	29
Virgin Islands	0	0	0	0	1
Vermont	1	2	1	2	0
Washington	15	13	16	14	4
Wisconsin	20	17	11	10	4
West Virginia	3	1	3	2	1

**Chart 16**  
**Degree-Seeking Undergraduates by Country of Origin**

	2004	2005	2006	2007	2008
Argentina	1	0	0	0	1
Barbados	1	1	1	0	0
Belarus	1	0	0	0	0
Bermuda	0	0	0	1	1
Botswana	2	0	1	1	1
Burkina Faso	0	0	0	1	1
Cameroon	0	0	0	0	0
Canada	53	46	40	37	28
Chile	2	2	2	1	2
China	6	5	4	3	3
Congo	1	1	0	0	0
Denmark	0	0	0	0	0
Gabon	0	1	1	2	2
Germany	0	0	0	0	0
Ghana	0	0	0	0	1
Great Britain	1	1	0	0	0
Greece	0	0	0	0	0
India	4	5	3	2	1
Ireland	1	1	1	1	0
Israel	1	0	1	0	0
Italy	0	0	0	0	0
Jamaica	0	1	1	1	0
Japan	2	0	6	4	3
Kenya	1	0	0	1	1
Korea	0	0	0	0	1
Kuwait	1	1	0	0	0
Lebanon	1	1	0	0	0
Mexico	0	0	0	0	0
Netherlands	3	2	1	0	0
Nigeria	4	5	5	3	2
Norway	0	1	1	1	1
Paraguay	0	0	0	0	1
Philippines	2	2	2	0	0
Rwanda	1	1	0	0	0
Saudi Arabia	2	2	2	2	1
Slovakia	1	0	0	0	0
Slovenia	0	0	0	1	1
South Africa	1	1	1	0	0
South Korea	3	4	2	1	0
Spain	2	1	0	0	0
Sweden	3	3	2	2	2
Switzerland	0	0	1	2	0
Taiwan	1	2	1	1	1
Thailand	1	0	0	0	0
United Arab Emirates	0	3	0	0	0

## **Program Characteristics**

**Chart 17  
Graduate Program Enrollment by Degree**

		<b>2004</b>	<b>2005</b>	<b>2006</b>	<b>2007</b>	<b>2008</b>
<b>Doctoral</b>	<b>Administration: Special Education</b>	27	27	20	21	18
	<b>HSLs: Au.D.</b>	34	33	38	38	41
	<b>HSLs: Ph.D.</b>	*	6	8	9	13
	<b>Education</b>	13	20	20	16	14
	<b>Linguistics</b>	14	18	16	14	15
<b>Master's</b>	<b>Psychology: Clinical</b>	34	32	34	38	36
	<b>Administration</b>	12	12	7	5	5
	<b>Counseling: Mental Health</b>	24	20	17	13	13
	<b>Counseling: School</b>	27	24	25	23	20
	<b>Deaf Education: ASL/ English Bilingual</b>	*	6	9	11	8
	<b>Deaf Studies</b>	21	24	27	21	18
	<b>Developmental Psychology</b>	11	17	6	**	**
	<b>Education: Advance Studies</b>	0	1	0	1	0
	<b>Education: Elementary</b>	12	16	6	11	9
	<b>Education: Family-Child Centered</b>	15	10	13	7	8
	<b>Education: Multiple Disabilities</b>	17	21	9	5	4
	<b>Education Secondary</b>	4	10	10	7	7
	<b>Education: Special Programs</b>	5	7	5	6	10
	<b>International Development</b>	*	*	8	15	18
	<b>Interpretation</b>	17	10	13	19	22
	<b>Leisure Services</b>	8	6	6	3	8
	<b>Linguistics</b>	19	17	11	10	8
	<b>Social Work</b>	31	37	41	39	32
	<b>Speech-Language Pathology</b>	25	24	23	23	24
	<b>Specialist</b>	<b>Administration &amp; Supervision</b>	0	1	0	0
<b>Change Leadership in Education</b>		*	14	14	7	12
<b>Deaf Education</b>		0	1	1	0	1
<b>Certificate</b>	<b>School Psychology</b>	19	21	16	16	16
	<b>Deaf History</b>	1	4	3	2	2
	<b>International Development</b>	15	16	11	4	1
	<b>Leadership Management</b>	3	2	6	2	0

\*Program not begun

\*\*Program terminated

**Chart 18**  
**Average Class Size by Department, Fall Semester**

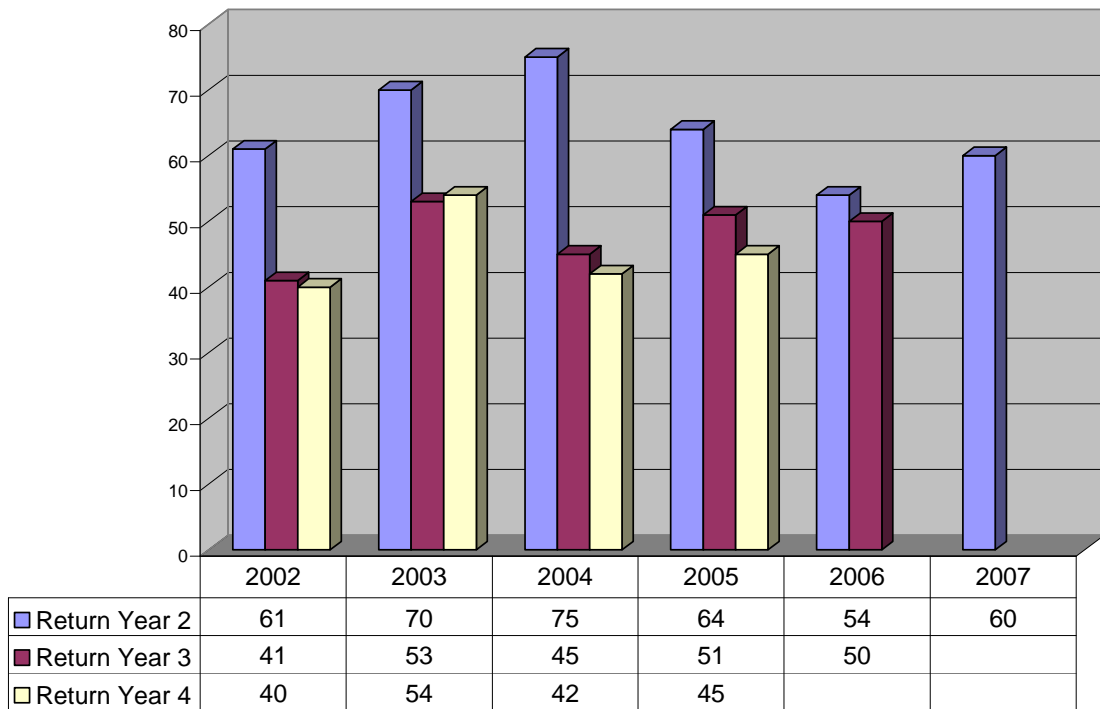
	<b>2004</b>	<b>2005</b>	<b>2006</b>	<b>2007</b>	<b>2008</b>
Accounting (ACC)	8.9	9.5	9	8.1	12.1
Administration (ADM)	3.6	4.9	3.9	3.9	5.7
American Sign Language (ASL)	8.3	9.4	9	9.5	9
ASL (Grad)	5	7	5.1	2.7	2.8
Applied Literacy (ALT)			8.8	7.6	10.2
Art (ART)	9.2	7.7	9.5	7.5	7.8
Biology (BIO)	13.6	12.8	13.6	12.7	14.3
Business Administration (BUS)	10.4	14.9	16.7	14.8	12.8
Chemistry (CHE)	6.5	11.3	6.8	6.1	6
Cntr for Acad Prgm & Stdnt Ser (CAP)	7.6	10.1	9.4	1.8	1.8
Communication Studies (COM)	12.8	13.3	11.4	11.8	13.7
Computer Information Science (CIS)	7.6	7.2	5.4	6.8	6.1
Computer Science (CSC)	4.8	5.8	4.3	3	2.6
Counseling (COU)	27	47	22	5	26
COU (Grad)	9.2	7.7	7	6.1	7.2
Deaf Studies (DST)	15.7	11.3	13.4	11.8	13.1
DST (Grad)		8	6.3	5.7	7.4
Economics & Finance (ECO)	17.9	7.4	12.4	8.3	16.7
Edu Foundation & Research (EDF)	8.5	12	8	9	14
EDF (Grad)	9.9	7.6	10.6	8.1	8.2
Education (EDU)	6.1	9.9	10.1	8.9	8.5
EDU (Grad)	7.7	2.8	5.5	6	5.2
English (ENG)	12.1	12.9	11.1	11.8	11.7
Family and Child Studies (FCS)	9.3	12	10.9	6.8	9.8
Foreign Lang, Lit & Culture (FLC)	7.7	3.3	5.5	6	5.5
French (FRE)	12.3	16.3	10.4	8	8.6
General Studies Requirements (GSR)				13.6	13
German (GER)	5.3	19	11.6	13.7	1
Government (GOV)	10.5	10.8	12.5	8.1	7.1
GOV (Grad)	8	7	12	10	13
Hearing, Speech & Language Sci (HSL)	10	9.8	10.5	8	13
HSL (Grad)	6.9	8	6.7	7.7	8.3
History (HIS)	12.9	14.2	12.5	13	14.4
HIS (Grad)	0.5	3	3.3	3.5	5.5
Honors Program (HON)	1.3	5.1	5.5	1.3	8
Interpretation (INT)		8	5	5.6	6.2
INT (Grad)	5.9	5	5.2	9.1	9.9
Italian (ITA)	16	17	13		8
Latin (LAT)	6.8	9.5	12.2	10	0
Linguistics (LIN)	14.7	9.1	12	12.7	13.6
LIN (Grad)	4.8	4.6	2.9	2.2	2.3
Mathematics (MAT)	13.9	16.2	14.6	11.9	11
Philosophy (PHI)	13.5	13.5	12.9	12.8	9.6
Physical Education (PED)	11	11.5	10.8	9.5	11.6
Physics (PHY)	7.4	9.7	10.3	10.4	10.4
Psychology (PSY)	10.4	12.6	13.7	13.2	12.9
PSY (Grad)	4.9	4.6	4.2	4.4	4.5
Recreation (REC)	3.4	6	4.4	3.8	8.7
REC (Grad)	1	2	1.4	2.5	7
Religion (REL)	3.8	10	8.5	3.3	8
Social Work (SWK)	7.8	10.9	12.1	9.9	8.9
SWK (Grad)	8.5	10.2	9.3	13.9	8.1

Sociology (SOC)	13.2	16.8	13.2	13.7	10.1
Spanish (SPA)	7.8	12.6	13.1	11.2	13.3
Theatre Arts (THE)	9.2	10.5	7.9	7.2	9.7
Women's Studies (WMS)		1	8	5	0
<b>Undergraduate Average</b>	10.1	11.4	11	9.8	10.7
<b>Graduate Average</b>	6.1	5.1	5.5	5.8	6

## **Retention & Program Completion**

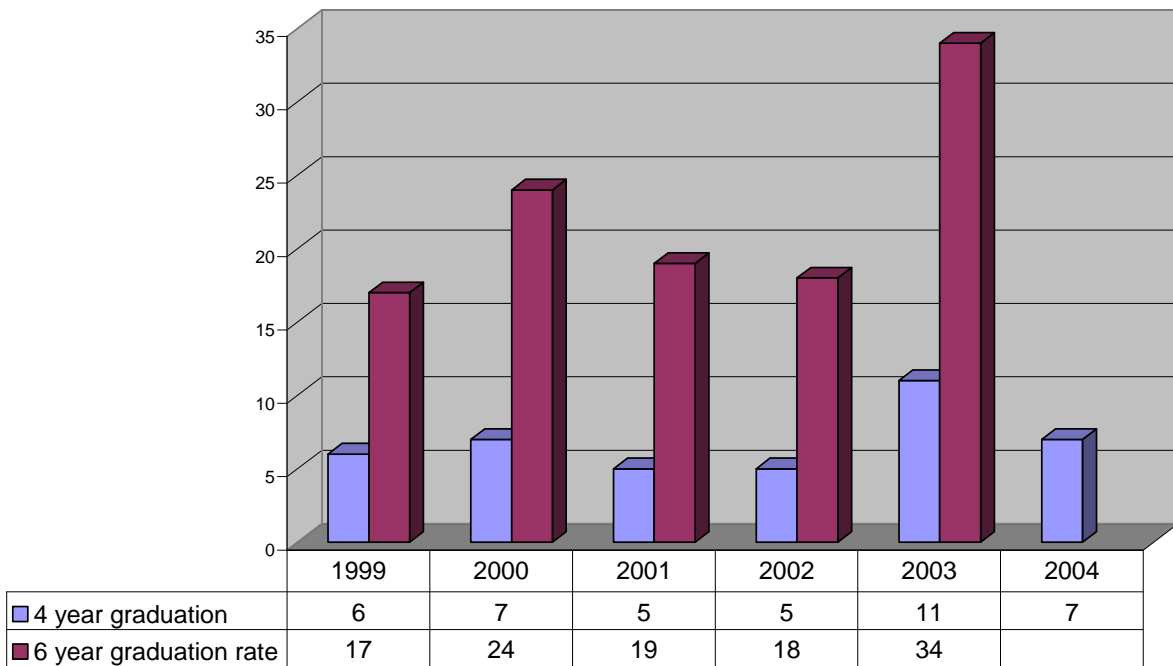
**Chart 19**

**First Time Freshman Retention**



**Chart 20**

**First time Freshman graduation rate**



## **Special Populations**

Chart 21

**Percent Freshman Applications by Ethnic Group**

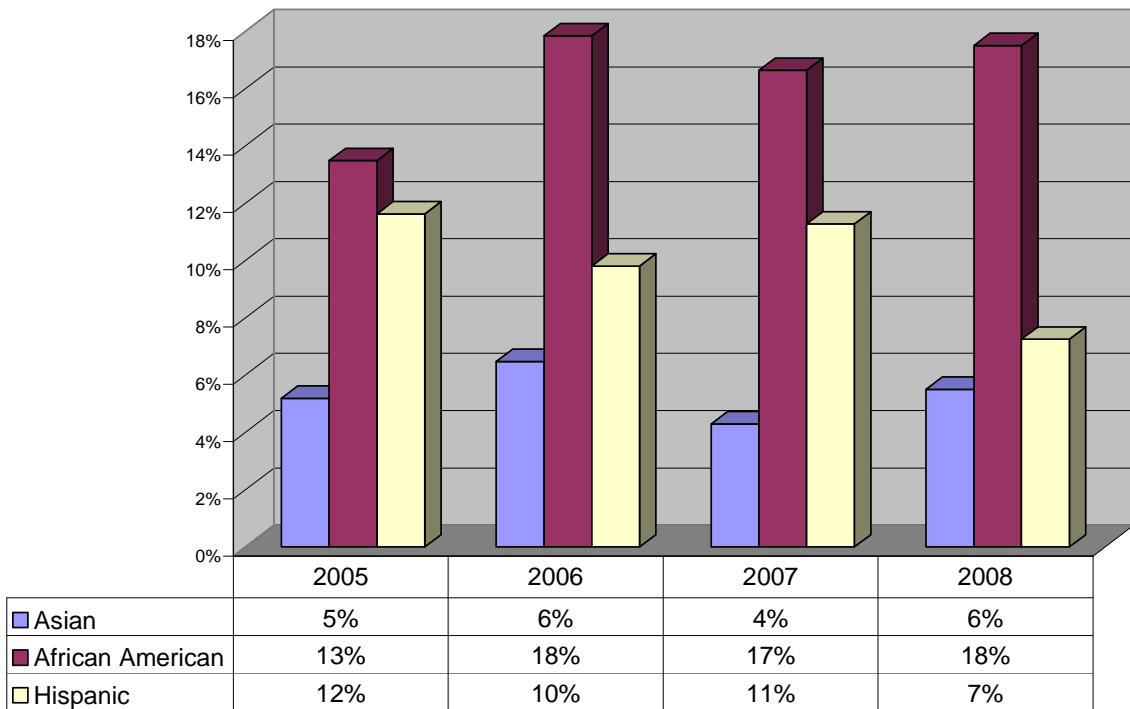


Chart 22

**Percent of Freshman Applicants Admitted by Year**

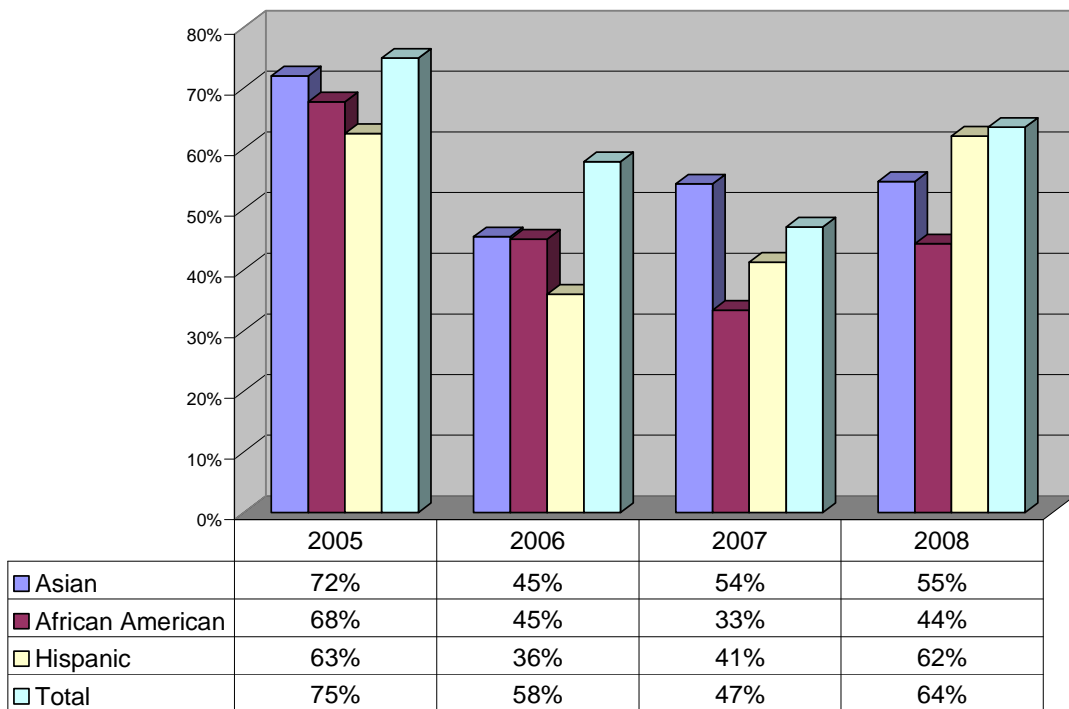


Chart 23

**Percentage of Enrollments per Freshman Applicants by Year**

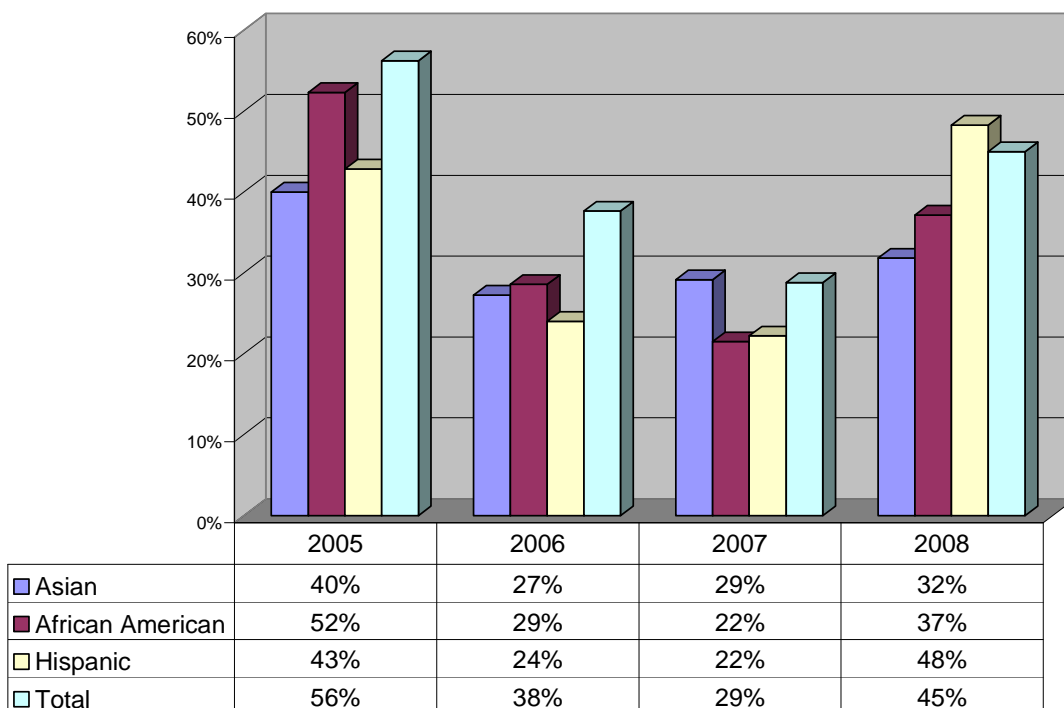


Chart 24

**African American Retention by Freshman Cohort Entering Year**

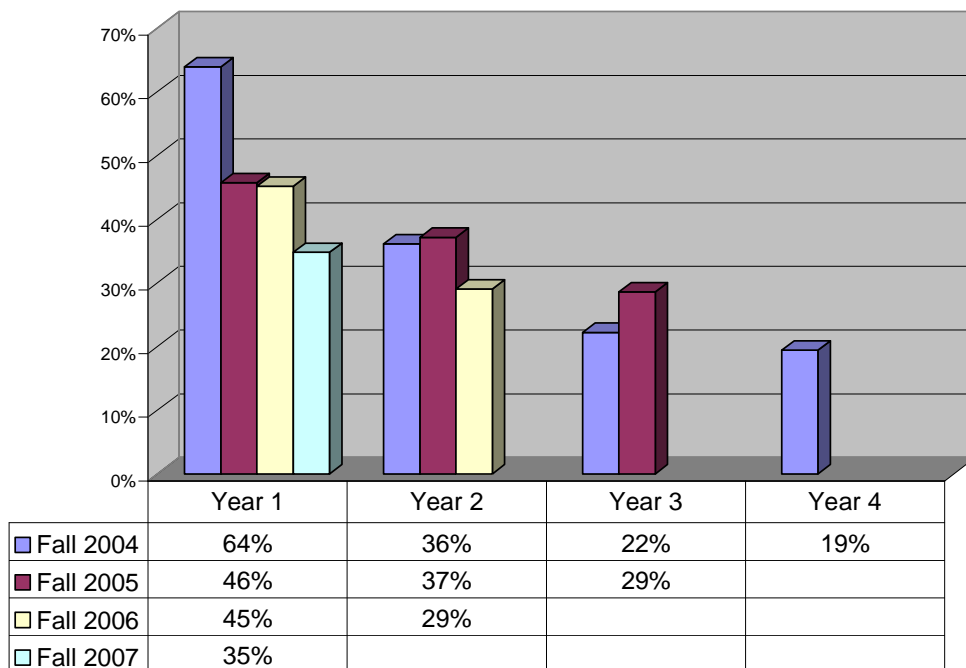


Chart 25

**Asian American Retention by Cohort Entry Year**

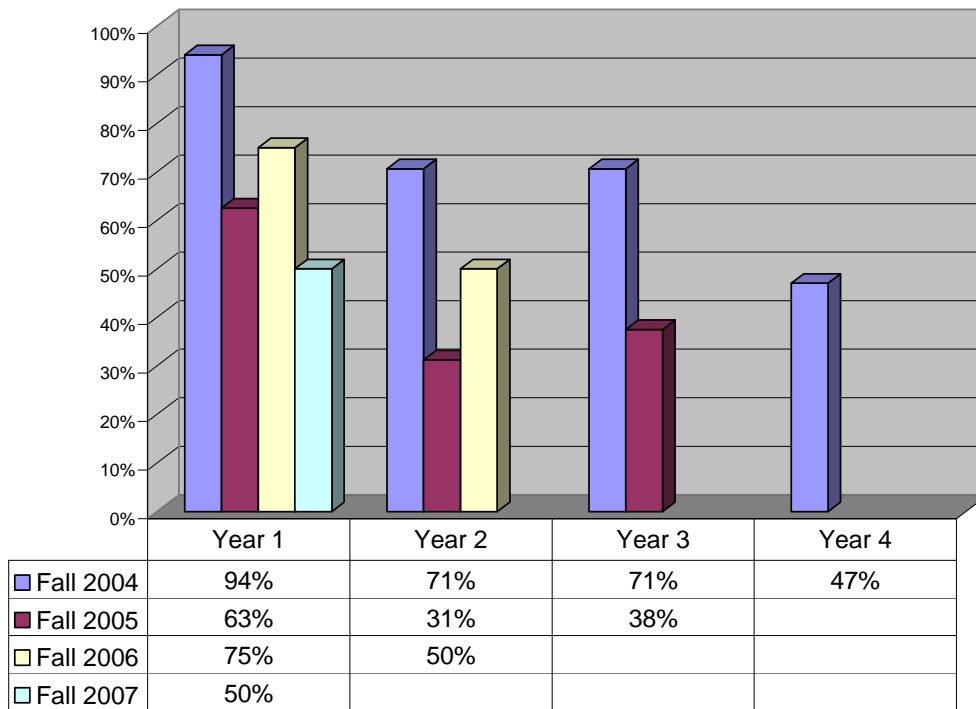


Chart 26

**Hispanic Student Retention by Entering Year Cohort**

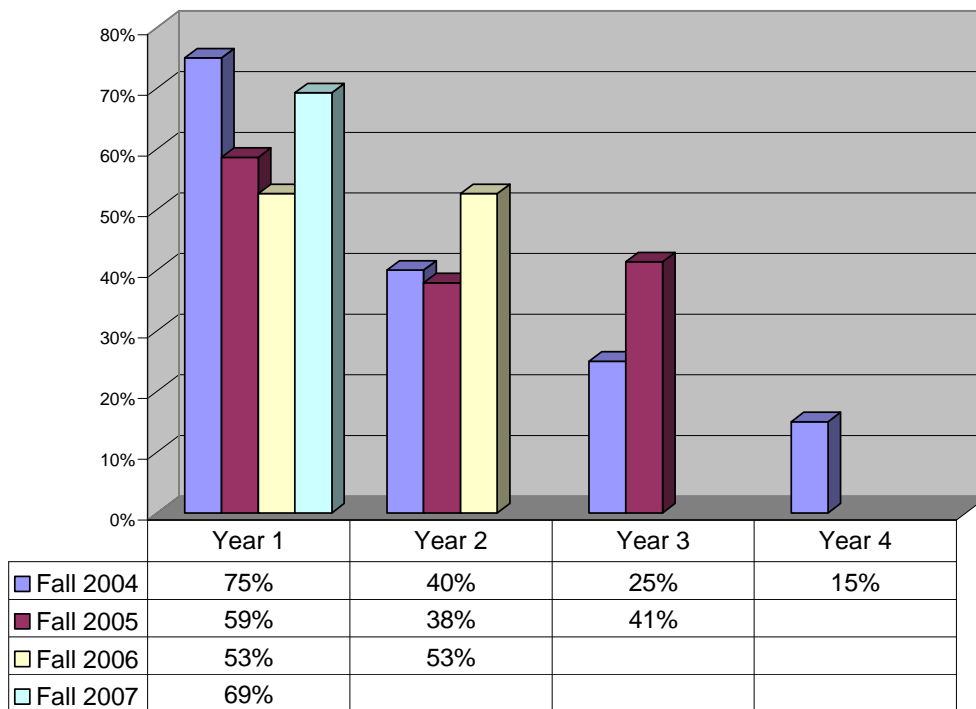


Chart 27

**Six Year Graduation Rate by Freshman Cohort Entry Year**

